

KD-Validated Anti-SMYD4 Mouse Monoclonal Antibody
Mouse monoclonal antibody
Catalog # AGI2246**Specification****KD-Validated Anti-SMYD4 Mouse Monoclonal Antibody - Product Information**

Application	WB
Primary Accession	Q8IYR2
Reactivity	Human
Clonality	Monoclonal
Isotype	Mouse IgG1
Calculated MW	Predicted, 89 kDa; observed, 75 kDa
Gene Name	KDa SMYD4
Aliases	SMYD4; SET And MYND Domain Containing 4; KIAA1936; ZMYND21; SET And MYND Domain-Containing Protein 4; EC 2.1.1.- Recombinant protein of human SMYD4
Immunogen	

KD-Validated Anti-SMYD4 Mouse Monoclonal Antibody - Additional Information

Gene ID	114826
Other Names	
SET and MYND domain-containing protein 4, 2.1.1.-, SMYD4, KIAA1936	

KD-Validated Anti-SMYD4 Mouse Monoclonal Antibody - Protein Information**Name** SMYD4 ([HGNC:21067](#))**Synonyms** KIAA1936**Function**

Protein-lysine N-methyltransferase. Monomethylates PRMT5, modulating its transcriptional activity (PubMed:38438251). May also act as a histone methyltransferase (By similarity). Plays a critical role in cardiac development. Acts as a key epigenetic regulator of gene expression during cardiac development via its dual activities as a methyltransferase and negative regulator of HDAC1 (By similarity).

Cellular Location

Nucleus. Cytoplasm

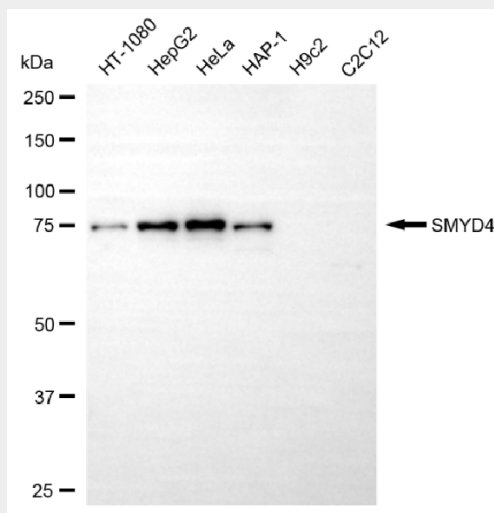
KD-Validated Anti-SMYD4 Mouse Monoclonal Antibody - Protocols

Provided below are standard protocols that you may find useful for product applications.

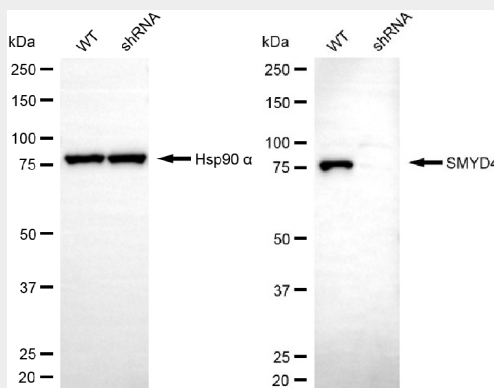
- [Western Blot](#)
- [Blocking Peptides](#)

- [Dot Blot](#)
- [Immunohistochemistry](#)
- [Immunofluorescence](#)
- [Immunoprecipitation](#)
- [Flow Cytometry](#)
- [Cell Culture](#)

KD-Validated Anti-SMYD4 Mouse Monoclonal Antibody - Images



Western blotting analysis using anti-SMYD4 antibody (Cat#AGI2246). Total cell lysates (30 μ g) from various cell lines were loaded and separated by SDS-PAGE. The blot was incubated with anti-SMYD4 antibody (Cat#AGI2246, 1:2,000) and HRP-conjugated goat anti-mouse secondary antibody respectively.



Western blotting analysis using anti-SMYD4 antibody (Cat#AGI2246). SMYD4 expression in wild-type (WT) and SMYD4 shRNA knockdown (KD) HT-1080 cells with 30 μ g of total cell lysates. Hsp90 α serves as a loading control. The blot was incubated with anti-SMYD4 antibody (Cat#AGI2246, 1:2,000) and HRP-conjugated goat anti-mouse secondary antibody respectively.