

KD-Validated Anti-Cathepsin Z Rabbit Monoclonal Antibody
Rabbit monoclonal antibody
Catalog # AGI2248**Specification**

KD-Validated Anti-Cathepsin Z Rabbit Monoclonal Antibody - Product Information

Application	WB
Primary Accession	Q9UBR2
Reactivity	Human
Clonality	Monoclonal
Isotype	Rabbit IgG
Calculated MW	Predicted, 34 kDa; observed, 36 kDa
Gene Name	CTSZ
Aliases	CTSZ; Cathepsin Z; Cathepsin X; CTSX; Cysteine-Type Carboxypeptidase; Lysosomal Carboxypeptidase B; Carboxypeptidase LB; Cathepsin IV; Cathepsin B2; Cathepsin Z1; Cathepsin Y; Cathepsin P; EC 3.4.18.1; Preprocathepsin P
Immunogen	Recombinant protein of human Cathepsin Z

KD-Validated Anti-Cathepsin Z Rabbit Monoclonal Antibody - Additional Information

Gene ID	1522
Other Names	
Cathepsin Z, 3.4.18.1, Cathepsin P, Cathepsin X, CTSZ	

KD-Validated Anti-Cathepsin Z Rabbit Monoclonal Antibody - Protein Information**Name** CTSZ**Function**

Exhibits carboxy-monopeptidase as well as carboxy-dipeptidase activity (PubMed:10504234). Capable of producing kinin potentiating peptides (By similarity).

Cellular Location

Lysosome.

Tissue Location

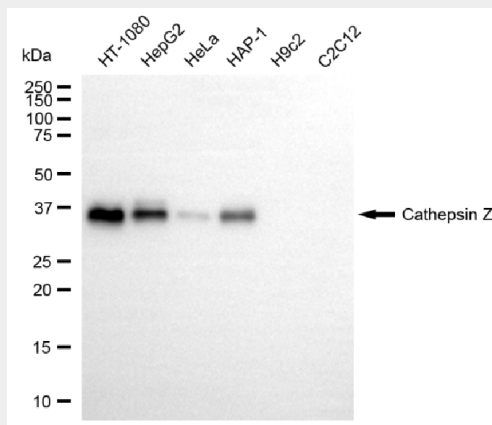
Widely expressed..

KD-Validated Anti-Cathepsin Z Rabbit Monoclonal Antibody - Protocols

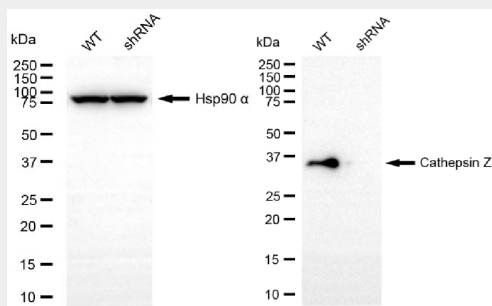
Provided below are standard protocols that you may find useful for product applications.

- [Western Blot](#)
- [Blocking Peptides](#)
- [Dot Blot](#)
- [Immunohistochemistry](#)
- [Immunofluorescence](#)
- [Immunoprecipitation](#)
- [Flow Cytometry](#)
- [Cell Culture](#)

KD-Validated Anti-Cathepsin Z Rabbit Monoclonal Antibody - Images



Western blotting analysis using anti-cathepsin Z antibody (Cat#AGI2248). Total cell lysates (30 µg) from various cell lines were loaded and separated by SDS-PAGE. The blot was incubated with anti-cathepsin Z antibody (Cat#AGI2248, 1:5,000) and HRP-conjugated goat anti-rabbit secondary antibody respectively.



Western blotting analysis using anti-cathepsin Z antibody (Cat#AGI2248). Cathepsin Z expression in wild-type (WT) and cathepsin Z (CTSZ) shRNA knockdown (KD) HeLa cells with 20 µg of total cell lysates. Hsp90 α serves as a loading control. The blot was incubated with anti-cathepsin Z antibody (Cat#AGI2248, 1:5,000) and HRP-conjugated goat anti-rabbit secondary antibody respectively.