

KD-Validated Anti-FAM98B Rabbit Monoclonal Antibody
Rabbit monoclonal antibody
Catalog # AGI2252**Specification**

KD-Validated Anti-FAM98B Rabbit Monoclonal Antibody - Product Information

Application	WB
Primary Accession	Q52LJ0
Reactivity	Rat, Human, Mouse
Clonality	Monoclonal
Isotype	Rabbit IgG
Calculated MW	Predicted, 46 kDa; observed, 42-44 kDa
Gene Name	KDa
Aliases	FAM98B
	FAM98B; Family With Sequence Similarity
	98 Member B; Protein FAM98B; FLJ38426;
	Family With Sequence Similarity 98,
	Member B
Immunogen	Recombinant protein of human FAM98B

KD-Validated Anti-FAM98B Rabbit Monoclonal Antibody - Additional Information

Gene ID	283742
Other Names	
Protein FAM98B, FAM98B	

KD-Validated Anti-FAM98B Rabbit Monoclonal Antibody - Protein Information**Name** FAM98B**Function**

Positively stimulates PRMT1-induced protein arginine dimethylated arginine methylation (PubMed:28040436).

Cellular Location

Nucleus. Cytoplasm

Tissue Location

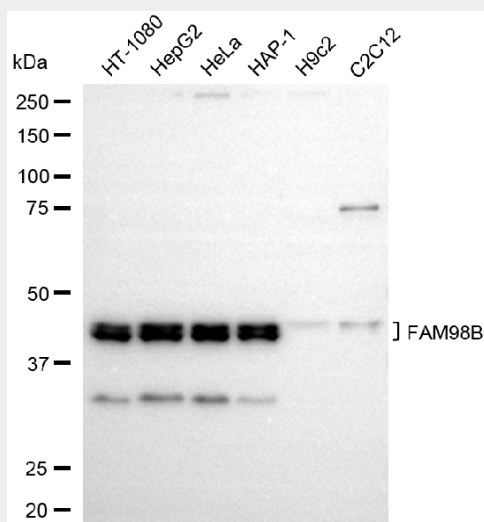
Expressed strongly in colorectal cancer tissues compared to wild-type colon samples (at protein level) (PubMed:28040436). Expressed strongly in colorectal cancer tissues compared to wild-type colon samples (PubMed:28040436)

KD-Validated Anti-FAM98B Rabbit Monoclonal Antibody - Protocols

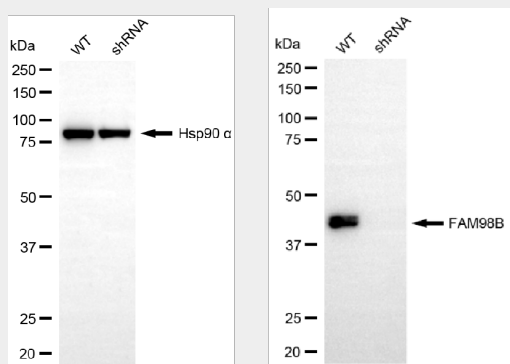
Provided below are standard protocols that you may find useful for product applications.

- [Western Blot](#)
- [Blocking Peptides](#)
- [Dot Blot](#)
- [Immunohistochemistry](#)
- [Immunofluorescence](#)
- [Immunoprecipitation](#)
- [Flow Cytometry](#)
- [Cell Culture](#)

KD-Validated Anti-FAM98B Rabbit Monoclonal Antibody - Images



Western blotting analysis using anti-FAM98B antibody (Cat#AGI2252). Total cell lysates (30 µg) from various cell lines were loaded and separated by SDS-PAGE. The blot was incubated with anti-FAM98B antibody (Cat#AGI2252, 1:5,000) and HRP-conjugated goat anti-rabbit secondary antibody respectively.



Western blotting analysis using anti-FAM98B antibody (Cat#AGI2252). FAM98B expression in wild-type (WT) and FAM98B shRNA knockdown (KD) HeLa cells with 20 µg of total cell lysates. Hsp90 α serves as a loading control. The blot was incubated with anti-FAM98B antibody (Cat#AGI2252, 1:5,000) and HRP-conjugated goat anti-rabbit secondary antibody respectively.