

**KD-Validated Anti-KCTD3 Rabbit Monoclonal Antibody**  
**Rabbit monoclonal antibody**  
**Catalog # AGI2255****Specification**

---

**KD-Validated Anti-KCTD3 Rabbit Monoclonal Antibody - Product Information**

Application	WB
Primary Accession	<a href="#">Q9Y597</a>
Reactivity	Human
Clonality	Monoclonal
Isotype	Rabbit IgG
Calculated MW	Predicted, 89 kDa; observed, 75-100 kDa
Gene Name	KCTD3
Aliases	KCTD3; Potassium Channel Tetramerization Domain Containing 3; NY-REN-45; Potassium Channel Tetramerisation Domain Containing 3; BTB/POZ Domain-Containing Protein KCTD3; Renal Carcinoma Antigen NY-REN-45; NY-REN-45 Antigen
Immunogen	Recombinant protein of human KCTD3

**KD-Validated Anti-KCTD3 Rabbit Monoclonal Antibody - Additional Information**

Gene ID	51133
<b>Other Names</b>	BTB/POZ domain-containing protein KCTD3, Renal carcinoma antigen NY-REN-45, KCTD3

**KD-Validated Anti-KCTD3 Rabbit Monoclonal Antibody - Protein Information****Name** KCTD3**Function**

Accessory subunit of potassium/sodium hyperpolarization- activated cyclic nucleotide-gated channel 3 (HCN3) up-regulating its cell-surface expression and current density without affecting its voltage dependence and kinetics.

**Cellular Location**

Cell membrane {ECO:0000250|UniProtKB:Q8BFX3}.

**Tissue Location**

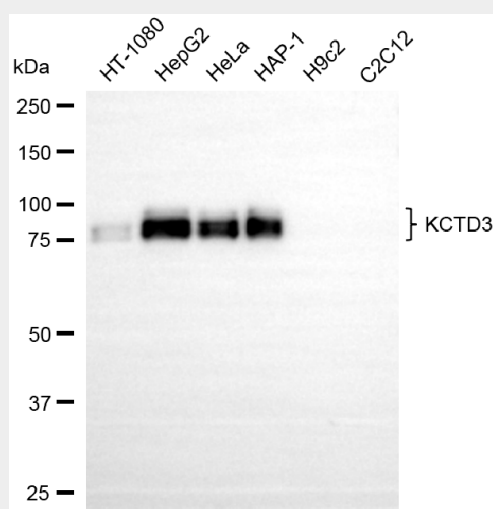
Broadly expressed in normal tissues.

**KD-Validated Anti-KCTD3 Rabbit Monoclonal Antibody - Protocols**

Provided below are standard protocols that you may find useful for product applications.

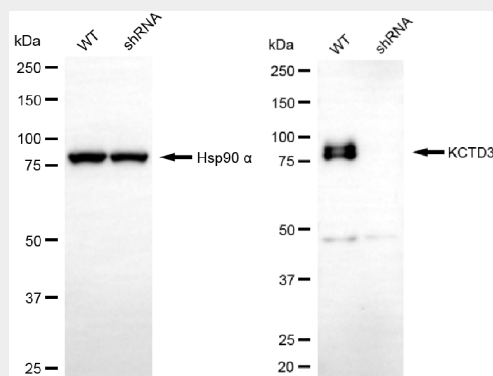
- [Western Blot](#)
- [Blocking Peptides](#)
- [Dot Blot](#)
- [Immunohistochemistry](#)
- [Immunofluorescence](#)
- [Immunoprecipitation](#)
- [Flow Cytometry](#)
- [Cell Culture](#)

### KD-Validated Anti-KCTD3 Rabbit Monoclonal Antibody - Images



Copyright ©2025 Genuin Biotechnologies LLC

Western blotting analysis using anti-KCTD3 antibody (Cat#AGI2255). Total cell lysates (30 µg) from various cell lines were loaded and separated by SDS-PAGE. The blot was incubated with anti-KCTD3 antibody (Cat#AGI2255, 1:5,000) and HRP-conjugated goat anti-rabbit secondary antibody respectively.



Copyright ©2025 Genuin Biotechnologies LLC

Western blotting analysis using anti-KCTD3 antibody (Cat#AGI2255). KCTD3 expression in wild-type (WT) and KCTD3 shRNA knockdown (KD) HeLa cells with 20 µg of total cell lysates. Hsp90 α serves as a loading control. The blot was incubated with anti-KCTD3 antibody (Cat#AGI2255, 1:5,000) and HRP-conjugated goat anti-rabbit secondary antibody respectively.