

**KD-Validated Anti-Lactate Dehydrogenase C Rabbit Monoclonal Antibody**  
**Rabbit monoclonal antibody**  
**Catalog # AGI2257****Specification**

---

**KD-Validated Anti-Lactate Dehydrogenase C Rabbit Monoclonal Antibody - Product Information**

Application	WB
Primary Accession	<a href="#">P07864</a>
Reactivity	Human
Clonality	Monoclonal
Isotype	Rabbit IgG
Calculated MW	Predicted, 36 kDa; observed, 31 kDa kDa
Gene Name	LDHC
Aliases	LDHC; Lactate Dehydrogenase C; CT32; Cancer/Testis Antigen 32; L-Lactate Dehydrogenase C Chain; LDH Testis Subunit; EC 1.1.1.27; LDH-C; LDH-X; LDH3; LDHX; Testis Secretory Sperm-Binding Protein Li 234P; Lactate Dehydrogenase C4; EC 1.1.1
Immunogen	A synthesized peptide derived from human Lactate Dehydrogenase C

**KD-Validated Anti-Lactate Dehydrogenase C Rabbit Monoclonal Antibody - Additional Information**

Gene ID	3948
<b>Other Names</b>	
L-lactate dehydrogenase C chain, LDH-C, 1.1.1.27, Cancer/testis antigen 32, CT32, LDH testis subunit, LDH-X, LDHC, LDH3, LDHX	

**KD-Validated Anti-Lactate Dehydrogenase C Rabbit Monoclonal Antibody - Protein Information****Name** LDHC**Synonyms** LDH3, LDHX**Function**

Possible role in sperm motility.

**Cellular Location**

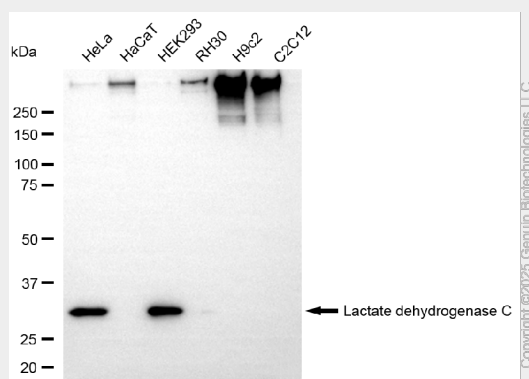
Cytoplasm.

**KD-Validated Anti-Lactate Dehydrogenase C Rabbit Monoclonal Antibody - Protocols**

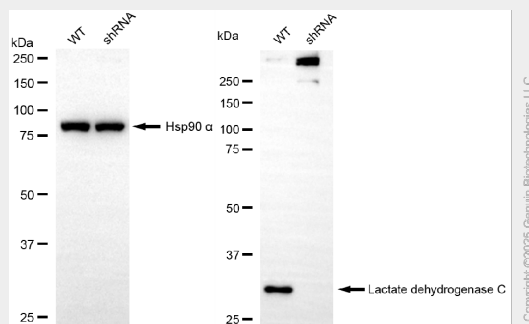
Provided below are standard protocols that you may find useful for product applications.

- [Western Blot](#)
- [Blocking Peptides](#)
- [Dot Blot](#)
- [Immunohistochemistry](#)
- [Immunofluorescence](#)
- [Immunoprecipitation](#)
- [Flow Cytometry](#)
- [Cell Culture](#)

### KD-Validated Anti-Lactate Dehydrogenase C Rabbit Monoclonal Antibody - Images



Western blotting analysis using anti-lactate dehydrogenase C antibody (Cat#AGI2257). Total cell lysates (30 µg) from various cell lines were loaded and separated by SDS-PAGE. The blot was incubated with anti-lactate dehydrogenase C antibody (Cat#AGI2257, 1:5,000) and HRP-conjugated goat anti-rabbit secondary antibody respectively.



Western blotting analysis using anti-lactate dehydrogenase C antibody (Cat#AGI2257). Lactate dehydrogenase C expression in wild-type (WT) and lactate dehydrogenase C (LDHC) shRNA knockdown (KD) HeLa cells with 20 µg of total cell lysates. Hsp90 α serves as a loading control. The blot was incubated with anti-lactate dehydrogenase C antibody (Cat#AGI2257, 1:5,000) and HRP-conjugated goat anti-rabbit secondary antibody respectively.