

KD-Validated Anti-NDUFB2 Rabbit Monoclonal Antibody
Rabbit monoclonal antibody
Catalog # AGI2259**Specification****KD-Validated Anti-NDUFB2 Rabbit Monoclonal Antibody - Product Information**

Application	WB
Primary Accession	O95178
Reactivity	Rat, Human, Mouse
Clonality	Monoclonal
Isotype	Rabbit IgG
Calculated MW	Predicted, 12 kDa; observed, 12 kDa kDa
Gene Name	NDUFB2
Aliases	NDUFB2; NADH:Ubiquinone Oxidoreductase Subunit B2; CI-AGGG; NADH-Ubiquinone Oxidoreductase AGGG Subunit; AGGG; NADH Dehydrogenase [Ubiquinone] 1 Beta Subcomplex Subunit 2, Mitochondrial; NADH Dehydrogenase (Ubiquinone) 1 Beta Subcomplex, 2, 8kDa; Complex I AGGG Subunit; Complex I-AGGG; NADH Dehydrogenase (Ubiquinone) 1 Beta Subcomplex, 2 (8kD, AGGG)
Immunogen	Recombinant protein of human NDUFB2

KD-Validated Anti-NDUFB2 Rabbit Monoclonal Antibody - Additional Information

Gene ID	4708
Other Names	
NADH dehydrogenase [ubiquinone] 1 beta subcomplex subunit 2, mitochondrial, Complex I-AGGG, CI-AGGG, NADH-ubiquinone oxidoreductase AGGG subunit, NDUFB2	

KD-Validated Anti-NDUFB2 Rabbit Monoclonal Antibody - Protein Information**Name** NDUFB2**Function**

Accessory subunit of the mitochondrial membrane respiratory chain NADH dehydrogenase (Complex I), that is believed not to be involved in catalysis. Complex I functions in the transfer of electrons from NADH to the respiratory chain. The immediate electron acceptor for the enzyme is believed to be ubiquinone.

Cellular Location

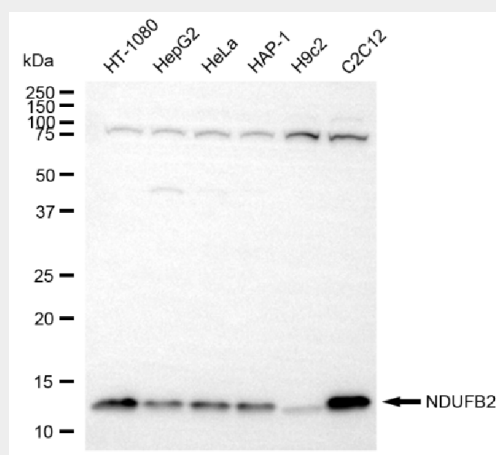
Mitochondrion inner membrane; Peripheral membrane protein; Matrix side

KD-Validated Anti-NDUFB2 Rabbit Monoclonal Antibody - Protocols

Provided below are standard protocols that you may find useful for product applications.

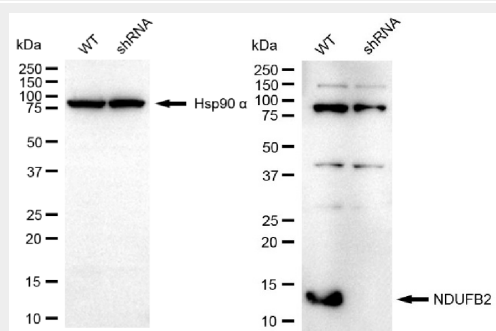
- [Western Blot](#)
- [Blocking Peptides](#)
- [Dot Blot](#)
- [Immunohistochemistry](#)
- [Immunofluorescence](#)
- [Immunoprecipitation](#)
- [Flow Cytometry](#)
- [Cell Culture](#)

KD-Validated Anti-NDUFB2 Rabbit Monoclonal Antibody - Images



Copyright ©2025 Genuin Biotechnologies LLC

Western blotting analysis using anti-NDUFB2 antibody (Cat#AGI2259). Total cell lysates (30 µg) from various cell lines were loaded and separated by SDS-PAGE. The blot was incubated with anti-NDUFB2 antibody (Cat#AGI2259, 1:5,000) and HRP-conjugated goat anti-rabbit secondary antibody respectively.



Copyright ©2025 Genuin Biotechnologies LLC

Western blotting analysis using anti-NDUFB2 antibody (Cat#AGI2259). NDUFB2 expression in wild-type (WT) and NDUFB2 shRNA knockdown (KD) HeLa cells with 20 µg of total cell lysates. Hsp90 α serves as a loading control. The blot was incubated with anti-NDUFB2 antibody (Cat#AGI2259, 1:5,000) and HRP-conjugated goat anti-rabbit secondary antibody respectively.