

KD-Validated Anti-POLDIP2 Rabbit Monoclonal Antibody
Rabbit monoclonal antibody
Catalog # AGI2261**Specification****KD-Validated Anti-POLDIP2 Rabbit Monoclonal Antibody - Product Information**

Application	WB
Primary Accession	Q9Y2S7
Reactivity	Rat, Human, Mouse
Clonality	Monoclonal
Isotype	Rabbit IgG
Calculated MW	Predicted, 42 kDa; observed, 35 kDa
Gene Name	KDa POLDIP2
Aliases	POLDIP2; DNA Polymerase Delta Interacting Protein 2; PDIP38; Polymerase (DNA-Directed), Delta Interacting Protein 2; 38 KDa DNA Polymerase Delta Interaction Protein; Polymerase Delta-Interacting Protein 2; DKFZP586F1524; POLD4; P38; Polymerase (DNA) Delta Interacting Protein 2; Polymerase Delta Interacting Protein 38
Immunogen	A synthesized peptide derived from human POLDIP2

KD-Validated Anti-POLDIP2 Rabbit Monoclonal Antibody - Additional Information

Gene ID	26073
Other Names	Polymerase delta-interacting protein 2, 38 kDa DNA polymerase delta interaction protein, p38, POLDIP2 {ECO:0000303 PubMed:26984527, ECO:0000312 HGNC:HGNC:23781}

KD-Validated Anti-POLDIP2 Rabbit Monoclonal Antibody - Protein Information

Name POLDIP2 {ECO:0000303|PubMed:26984527, ECO:0000312|HGNC:HGNC:23781}

Function

Involved in DNA damage tolerance by regulating translesion synthesis (TLS) of templates carrying DNA damage lesions such as 8oxoG and abasic sites (PubMed:24191025). May act by stimulating activity of DNA polymerases involved in TLS, such as PRIMPOL and polymerase delta (POLD1) (PubMed:24191025, PubMed:26984527).

Cellular Location

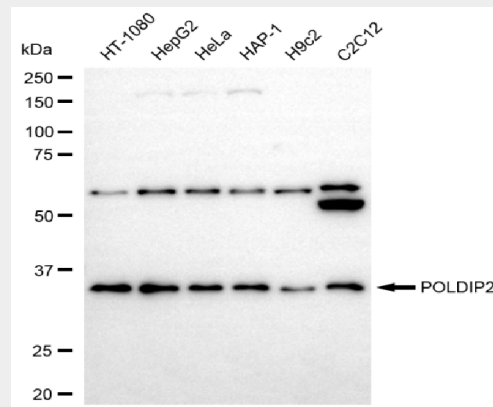
Mitochondrion matrix. Nucleus Note=Mainly localizes to the mitochondrial matrix; a small fraction localizes in the nucleus.

KD-Validated Anti-POLDIP2 Rabbit Monoclonal Antibody - Protocols

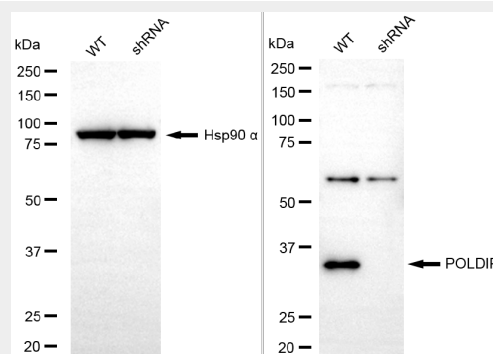
Provided below are standard protocols that you may find useful for product applications.

- [Western Blot](#)
- [Blocking Peptides](#)
- [Dot Blot](#)
- [Immunohistochemistry](#)
- [Immunofluorescence](#)
- [Immunoprecipitation](#)
- [Flow Cytometry](#)
- [Cell Culture](#)

KD-Validated Anti-POLDIP2 Rabbit Monoclonal Antibody - Images



Western blotting analysis using anti-POLDIP2 antibody (Cat#AGI2261). Total cell lysates (30 µg) from various cell lines were loaded and separated by SDS-PAGE. The blot was incubated with anti-POLDIP2 antibody (Cat#AGI2261, 1:5,000) and HRP-conjugated goat anti-rabbit secondary antibody respectively.



Western blotting analysis using anti-POLDIP2 antibody (Cat#AGI2261). POLDIP2 expression in wild-type (WT) and POLDIP2 shRNA knockdown (KD) HeLa cells with 20 µg of total cell lysates. Hsp90 α serves as a loading control. The blot was incubated with anti-POLDIP2 antibody (Cat#AGI2261, 1:5,000) and HRP-conjugated goat anti-rabbit secondary antibody respectively.