

KD-Validated Anti-Septin 7 Rabbit Monoclonal Antibody
Rabbit monoclonal antibody
Catalog # AGI2265**Specification****KD-Validated Anti-Septin 7 Rabbit Monoclonal Antibody - Product Information**

Application	WB
Primary Accession	Q16181
Reactivity	Rat, Human, Mouse
Clonality	Monoclonal
Isotype	Rabbit IgG
Calculated MW	Predicted, 51 kDa; observed, 45 kDa kDa
Gene Name	SEPTIN7
Aliases	SEPTIN7; Septin 7; Septin-7; SEPT7A; CDC10; SEPT7; CDC3; CDC10 Protein Homolog; CDC10 (Cell Division Cycle 10, S. Cerevisiae, Homolog); CDC10 Cell Division Cycle 10 Homolog (S. Cerevisiae); NBLA02942
Immunogen	Recombinant protein of human Septin 7

KD-Validated Anti-Septin 7 Rabbit Monoclonal Antibody - Additional Information

Gene ID	989
Other Names	
Septin-7, CDC10 protein homolog, SEPTIN7 (http://www.genenames.org/cgi-bin/gene_symbol_report?hgnc_id=1717) target="_blank">HGNC:1717), CDC10, SEPT7	

KD-Validated Anti-Septin 7 Rabbit Monoclonal Antibody - Protein Information**Name** SEPTIN7 ([HGNC:1717](#))**Synonyms** CDC10, SEPT7**Function**

Filament-forming cytoskeletal GTPase. Required for normal organization of the actin cytoskeleton. Required for normal progress through mitosis. Involved in cytokinesis. Required for normal association of CENPE with the kinetochore. Plays a role in ciliogenesis and collective cell movements. Forms a filamentous structure with SEPTIN12, SEPTIN6, SEPTIN2 and probably SEPTIN4 at the sperm annulus which is required for the structural integrity and motility of the sperm tail during postmeiotic differentiation (PubMed:<http://www.uniprot.org/citations/25588830> target="_blank">25588830).

Cellular Location

Cytoplasm. Chromosome, centromere, kinetochore Cytoplasm, cytoskeleton, spindle Cleavage furrow. Midbody. Cytoplasm, cytoskeleton, cilium axoneme. Cell projection, cilium, flagellum. Note=Distributed throughout the cytoplasm in prometaphase cells. Associated with the spindle

during metaphase. Associated with the central spindle and at the cleavage furrow in anaphase cells. Detected at the midbody in telophase Associated with actin stress fibers (By similarity). Found in the sperm annulus (PubMed:25588830). {ECO:0000250, ECO:0000269|PubMed:25588830}

Tissue Location

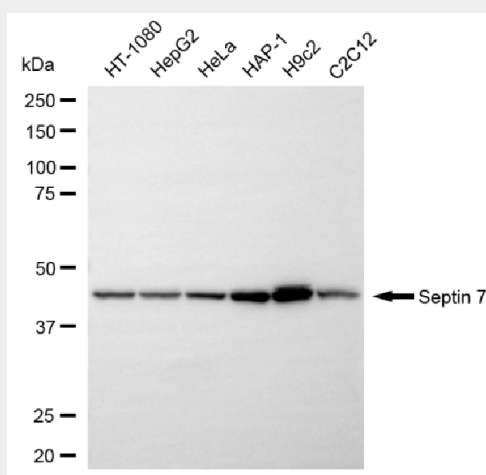
Widely expressed..

KD-Validated Anti-Septin 7 Rabbit Monoclonal Antibody - Protocols

Provided below are standard protocols that you may find useful for product applications.

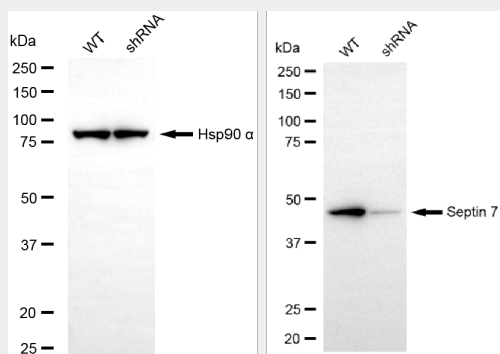
- [Western Blot](#)
- [Blocking Peptides](#)
- [Dot Blot](#)
- [Immunohistochemistry](#)
- [Immunofluorescence](#)
- [Immunoprecipitation](#)
- [Flow Cytometry](#)
- [Cell Culture](#)

KD-Validated Anti-Septin 7 Rabbit Monoclonal Antibody - Images



Copyright ©2025 Genuin Biotechnologies LLC

Western blotting analysis using anti-septin 7 antibody (Cat#AGI2265). Total cell lysates (30 µg) from various cell lines were loaded and separated by SDS-PAGE. The blot was incubated with anti-septin 7 antibody (Cat#AGI2265, 1:5,000) and HRP-conjugated goat anti-rabbit secondary antibody respectively.



Copyright ©2025 Genuin Biotechnologies LLC

Western blotting analysis using anti-septin 7 antibody (Cat#AGI2265). Septin 7 expression in wild-type (WT) and septin 7 (SEPTIN7) shRNA knockdown (KD) HeLa cells with 20 µg of total cell lysates. Hsp90 α serves as a loading control. The blot was incubated with anti-septin 7 antibody (Cat#AGI2265, 1:5,000) and HRP-conjugated goat anti-rabbit secondary antibody respectively.