

KD-Validated Anti-SLBP Rabbit Monoclonal Antibody
Rabbit monoclonal antibody
Catalog # AGI2267**Specification****KD-Validated Anti-SLBP Rabbit Monoclonal Antibody - Product Information**

Application	WB
Primary Accession	Q14493
Reactivity	Human
Clonality	Monoclonal
Isotype	Rabbit IgG
Calculated MW	Predicted, 31 kDa; observed, 37 kDa
Gene Name	SLBP
Aliases	SLBP; Stem-Loop Histone MRNA Binding Protein; HBP; Stem-Loop (Histone) Binding Protein; Histone RNA Hairpin-Binding Protein; Stem-Loop Binding Protein; Histone Binding Protein; Histone Stem-Loop Binding Protein; Histone Stem-Loop-Binding Protein; Hairpin Binding Protein, Histone
Immunogen	A synthesized peptide derived from human SLBP

KD-Validated Anti-SLBP Rabbit Monoclonal Antibody - Additional Information

Gene ID	7884
Other Names	
Histone RNA hairpin-binding protein, Histone stem-loop-binding protein, SLBP, HBP	

KD-Validated Anti-SLBP Rabbit Monoclonal Antibody - Protein Information**Name** SLBP**Synonyms** HBP**Function**

RNA-binding protein involved in the histone pre-mRNA processing (PubMed: [12588979](http://www.uniprot.org/citations/12588979), PubMed: [19155325](http://www.uniprot.org/citations/19155325), PubMed: [8957003](http://www.uniprot.org/citations/8957003), PubMed: [9049306](http://www.uniprot.org/citations/9049306)). Binds the stem-loop structure of replication-dependent histone pre-mRNAs and contributes to efficient 3'-end processing by stabilizing the complex between histone pre-mRNA and U7 small nuclear ribonucleoprotein (snRNP), via the histone downstream element (HDE) (PubMed: [12588979](http://www.uniprot.org/citations/12588979), PubMed: [19155325](http://www.uniprot.org/citations/19155325), PubMed: [8957003](http://www.uniprot.org/citations/8957003), PubMed: [9049306](http://www.uniprot.org/citations/9049306)).

[9049306](http://www.uniprot.org/citations/9049306)). Plays an important role in targeting mature histone mRNA from the nucleus to the cytoplasm and to the translation machinery (PubMed:[12588979](http://www.uniprot.org/citations/12588979), PubMed:[19155325](http://www.uniprot.org/citations/19155325), PubMed:[8957003](http://www.uniprot.org/citations/8957003), PubMed:[9049306](http://www.uniprot.org/citations/9049306)). Stabilizes mature histone mRNA and could be involved in cell-cycle regulation of histone gene expression (PubMed:[12588979](http://www.uniprot.org/citations/12588979), PubMed:[19155325](http://www.uniprot.org/citations/19155325), PubMed:[8957003](http://www.uniprot.org/citations/8957003), PubMed:[9049306](http://www.uniprot.org/citations/9049306)). Involved in the mechanism by which growing oocytes accumulate histone proteins that support early embryogenesis (By similarity). Binds to the 5' side of the stem-loop structure of histone pre-mRNAs (By similarity).

Cellular Location

Cytoplasm. Nucleus. Note=Polyribosome-associated (PubMed:12588979). Localizes predominantly in the nucleus at the G1/G2 phases and the beginning of S phase (PubMed:12588979). Through the S phase, partially redistributes to the cytoplasm (PubMed:12588979) Binding to histone mRNA is necessary for cytoplasmic localization (PubMed:12588979). Shuttles between the nucleus and the cytoplasm (PubMed:15829567). Imported in the nucleus by the Importin alpha/Importin beta receptor (PubMed:15829567)

Tissue Location

Widely expressed..

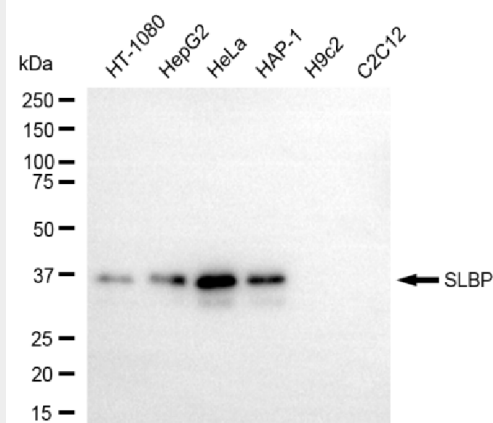
KD-Validated Anti-SLBP Rabbit Monoclonal Antibody - Protocols

Provided below are standard protocols that you may find useful for product applications.

- [Western Blot](#)
- [Blocking Peptides](#)
- [Dot Blot](#)
- [Immunohistochemistry](#)
- [Immunofluorescence](#)
- [Immunoprecipitation](#)
- [Flow Cytometry](#)
- [Cell Culture](#)

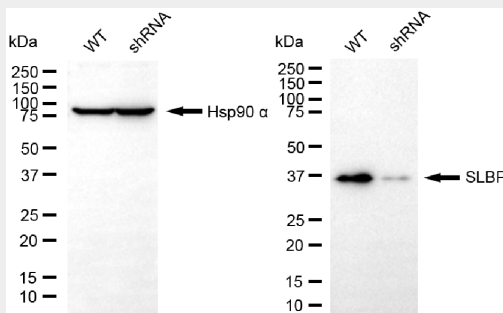
KD-Validated Anti-SLBP Rabbit Monoclonal Antibody - Images





Copyright ©2025 Genuin Biotechnologies LLC

Western blotting analysis using anti-SLBP antibody (Cat#AGI2267). Total cell lysates (30 μ g) from various cell lines were loaded and separated by SDS-PAGE. The blot was incubated with anti-SLBP antibody (Cat#AGI2267, 1:5,000) and HRP-conjugated goat anti-rabbit secondary antibody respectively.



Copyright ©2025 Genuin Biotechnologies LLC

Western blotting analysis using anti-SLBP antibody (Cat#AGI2267). SLBP expression in wild-type (WT) and SLBP shRNA knockdown (KD) HT-1080 cells with 30 μ g of total cell lysates. Hsp90 α serves as a loading control. The blot was incubated with anti-SLBP antibody (Cat#AGI2267, 1:5,000) and HRP-conjugated goat anti-rabbit secondary antibody respectively.