

KD-Validated Anti-TACSTD2 Rabbit Monoclonal Antibody
Rabbit monoclonal antibody
Catalog # AGI2271**Specification****KD-Validated Anti-TACSTD2 Rabbit Monoclonal Antibody - Product Information**

Application	WB
Primary Accession	P09758
Reactivity	Human
Clonality	Monoclonal
Isotype	Rabbit IgG
Calculated MW	Predicted, 36 kDa; observed, 36-55 kDa
Gene Name	KDa
Aliases	TACSTD2
	TACSTD2; Tumor Associated Calcium Signal Transducer 2; GA733-1; TROP2; EGP-1; M1S1; Membrane Component Chromosome 1 Surface Marker 1; Tumor-Associated Calcium Signal Transducer 2; Pancreatic Carcinoma Marker Protein GA733-1; Trophoblast Cell Surface Antigen 2; Cell Surface Glycoprotein Trop-2; Epithelial Glycoprotein-1; 40kD Glycoprotein, Identified By Monoclonal Antibody GA733; Membrane Component, Chromosome 1, Surface Marker 1; Gastrointestinal Tumor-Associated Antigen GA7331; Pancreatic Carcinoma Marker Protein GA7331; Cell Surface Glycoprotein TROP2; GA7331; EGP1; GP50
Immunogen	A synthesized peptide derived from human TACSTD2

KD-Validated Anti-TACSTD2 Rabbit Monoclonal Antibody - Additional Information

Gene ID	4070
Other Names	
Tumor-associated calcium signal transducer 2, Cell surface glycoprotein Trop-2, Membrane component chromosome 1 surface marker 1, Pancreatic carcinoma marker protein GA733-1, TACSTD2, GA733-1, M1S1, TROP2	

KD-Validated Anti-TACSTD2 Rabbit Monoclonal Antibody - Protein Information**Name** TACSTD2**Synonyms** GA733-1, M1S1, TROP2**Function**

May function as a growth factor receptor.

Cellular Location

Membrane; Single-pass type I membrane protein.

Tissue Location

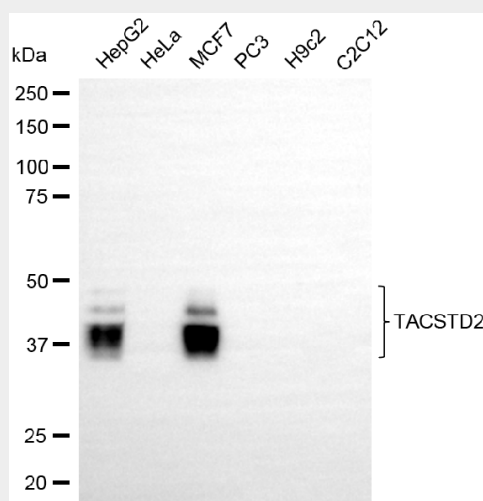
Placenta, pancreatic carcinoma cell lines.

KD-Validated Anti-TACSTD2 Rabbit Monoclonal Antibody - Protocols

Provided below are standard protocols that you may find useful for product applications.

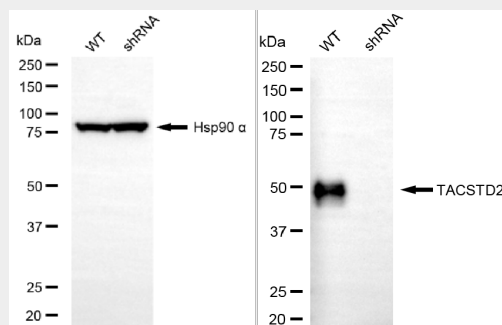
- [Western Blot](#)
- [Blocking Peptides](#)
- [Dot Blot](#)
- [Immunohistochemistry](#)
- [Immunofluorescence](#)
- [Immunoprecipitation](#)
- [Flow Cytometry](#)
- [Cell Culture](#)

KD-Validated Anti-TACSTD2 Rabbit Monoclonal Antibody - Images



Copyright ©2025 Genuin Biotechnologies LLC

Western blotting analysis using anti-TACSTD2 antibody (Cat#AGI2271). Total cell lysates (30 µg) from various cell lines were loaded and separated by SDS-PAGE. The blot was incubated with anti-TACSTD2 antibody (Cat#AGI2271, 1:5,000) and HRP-conjugated goat anti-rabbit secondary antibody respectively.



Copyright ©2025 Genuin Biotechnologies LLC

Western blotting analysis using anti-TACSTD2 antibody (Cat#AGI2271). TACSTD2 expression in wild-type (WT) and TACSTD2 shRNA knockdown (KD) HeLa cells with 20 µg of total cell lysates. Hsp90 α serves as a loading control. The blot was incubated with anti-TACSTD2 antibody (Cat#AGI2271, 1:5,000) and HRP-conjugated goat anti-rabbit secondary antibody respectively.