

KD-Validated Anti-TAF1C Rabbit Monoclonal Antibody
Rabbit monoclonal antibody
Catalog # AGI2272**Specification****KD-Validated Anti-TAF1C Rabbit Monoclonal Antibody - Product Information**

Application	WB
Primary Accession	Q15572
Reactivity	Rat, Human
Clonality	Monoclonal
Isotype	Rabbit IgG
Calculated MW	Predicted, 95 kDa; observed, 100 kDa KDa
Gene Name	TAF1C
Aliases	TAF1C; TATA-Box Binding Protein Associated Factor, RNA Polymerase I Subunit C; TAFI110; MGC:39976; TAFI95; SL1; TATA Box Binding Protein (TBP)-Associated Factor, RNA Polymerase I, C, 110kDa; TATA Box Binding Protein (TBP)-Associated Factor, RNA Polymerase I, C, 110kD; TATA Box-Binding Protein-Associated Factor RNA Polymerase I Subunit C; RNA Polymerase I-Specific TBP-Associated Factor 110 KDa; Transcription Initiation Factor SL1/TIF-IB Subunit C; TATA Box-Binding Protein-Associated Factor 1C; TBP-Associated Factor 1C; TATA-Box Binding Protein Associated Factor, RNA Polymerase I, C; Transcription Factor SL1; SL1, 110kD Subunit
Immunogen	A synthesized peptide derived from human TAF1C

KD-Validated Anti-TAF1C Rabbit Monoclonal Antibody - Additional Information

Gene ID	9013
Other Names	TATA box-binding protein-associated factor RNA polymerase I subunit C, RNA polymerase I-specific TBP-associated factor 110 kDa, TAFI110, TATA box-binding protein-associated factor 1C, TBP-associated factor 1C, Transcription initiation factor SL1/TIF-IB subunit C, TAF1C

KD-Validated Anti-TAF1C Rabbit Monoclonal Antibody - Protein Information**Name** TAF1C**Function**

Component of the transcription factor SL1/TIF-IB complex, which is involved in the assembly of the

PIC (pre-initiation complex) during RNA polymerase I-dependent transcription. The rate of PIC formation probably is primarily dependent on the rate of association of SL1/TIF-IB with the rDNA promoter. SL1/TIF-IB is involved in stabilization of nucleolar transcription factor 1/UBTF on rDNA. Formation of SL1/TIF-IB excludes the association of TBP with TFIID subunits. Recruits RNA polymerase I to the rRNA gene promoter via interaction with RRN3.

Cellular Location

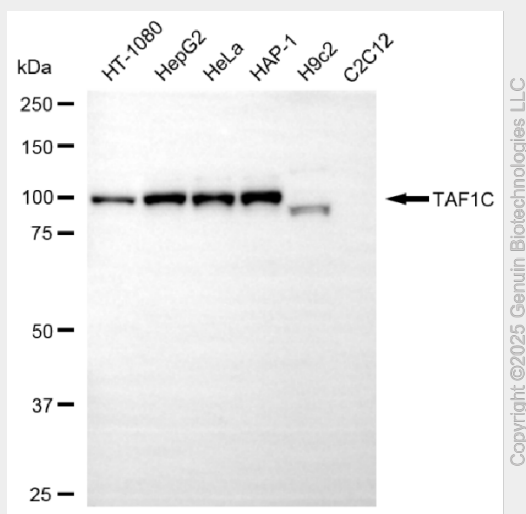
Nucleus, nucleolus

KD-Validated Anti-TAF1C Rabbit Monoclonal Antibody - Protocols

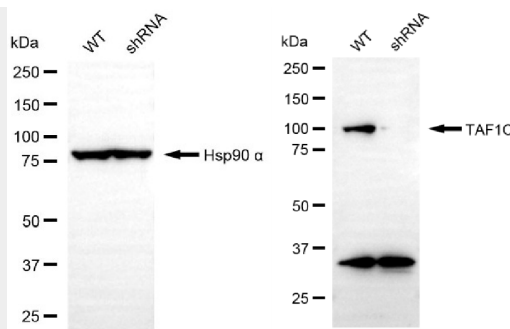
Provided below are standard protocols that you may find useful for product applications.

- [Western Blot](#)
- [Blocking Peptides](#)
- [Dot Blot](#)
- [Immunohistochemistry](#)
- [Immunofluorescence](#)
- [Immunoprecipitation](#)
- [Flow Cytometry](#)
- [Cell Culture](#)

KD-Validated Anti-TAF1C Rabbit Monoclonal Antibody - Images



Western blotting analysis using anti-TAF1C antibody (Cat#AGI2272). Total cell lysates (30 µg) from various cell lines were loaded and separated by SDS-PAGE. The blot was incubated with anti-TAF1C antibody (Cat#AGI2272, 1:5,000) and HRP-conjugated goat anti-rabbit secondary antibody respectively.



Western blotting analysis using anti-TAF1C antibody (Cat#AGI2272). TAF1C expression in wild-type (WT) and TAF1C shRNA knockdown (KD) HT-1080 cells with 20 μ g of total cell lysates. Hsp90 α serves as a loading control. The blot was incubated with anti-TAF1C antibody (Cat#AGI2272, 1:5,000) and HRP-conjugated goat anti-rabbit secondary antibody respectively.