

KD-Validated Anti-TEAD4 Rabbit Monoclonal Antibody
Rabbit monoclonal antibody
Catalog # AGI2273**Specification****KD-Validated Anti-TEAD4 Rabbit Monoclonal Antibody - Product Information**

Application	WB
Primary Accession	Q15561
Reactivity	Rat, Human, Mouse
Clonality	Monoclonal
Isotype	Rabbit IgG
Calculated MW	Predicted, 48 kDa; observed, 54 kDa kDa
Gene Name	TEAD4
Aliases	TEAD4; TEA Domain Transcription Factor 4; TEA Domain Family Member 4; TCF13L1; TEFR-1; EFTR-2; TEF-3; Transcriptional Enhancer Factor TEF-3; Transcriptional Enhancer Factor 3; Transcription Factor 13-Like 1; Transcription Factor RTEF-1; RTEF-1; RTEF1; TEF3; Transcriptional Enhancer Factor 1-Related; Related Transcription Enhancer Factor 1B; HRTEF-1B; TEAD-4
Immunogen	Recombinant protein of human TEAD4

KD-Validated Anti-TEAD4 Rabbit Monoclonal Antibody - Additional Information

Gene ID	7004
Other Names	
Transcriptional enhancer factor TEF-3, TEA domain family member 4, TEAD-4, Transcription factor 13-like 1, Transcription factor RTEF-1, TEAD4, RTEF1, TCF13L1, TEF3	

KD-Validated Anti-TEAD4 Rabbit Monoclonal Antibody - Protein Information**Name** TEAD4**Synonyms** RTEF1, TCF13L1, TEF3**Function**

Transcription factor which plays a key role in the Hippo signaling pathway, a pathway involved in organ size control and tumor suppression by restricting proliferation and promoting apoptosis. The core of this pathway is composed of a kinase cascade wherein MST1/MST2, in complex with its regulatory protein SAV1, phosphorylates and activates LATS1/2 in complex with its regulatory protein MOB1, which in turn phosphorylates and inactivates YAP1 oncoprotein and WWTR1/TAZ. Acts by mediating gene expression of YAP1 and WWTR1/TAZ, thereby regulating cell proliferation, migration and epithelial mesenchymal transition (EMT) induction. Binds specifically and non-cooperatively to the Sph and GT-IIC 'enhansons' (5'-GTGGAATGT-3') and activates transcription. Binds to the M-CAT motif.

Cellular Location

Nucleus.

Tissue Location

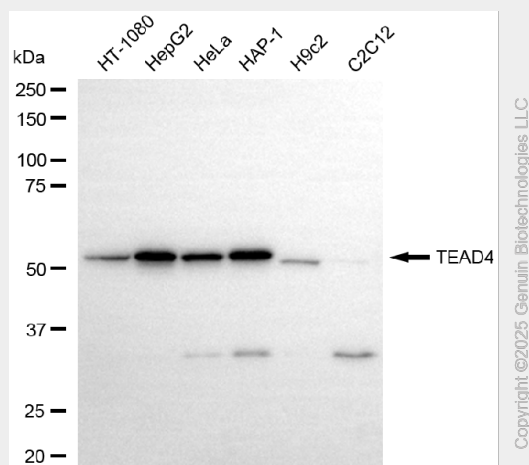
Preferentially expressed in skeletal muscle. Lower levels in pancreas, placenta, and heart

KD-Validated Anti-TEAD4 Rabbit Monoclonal Antibody - Protocols

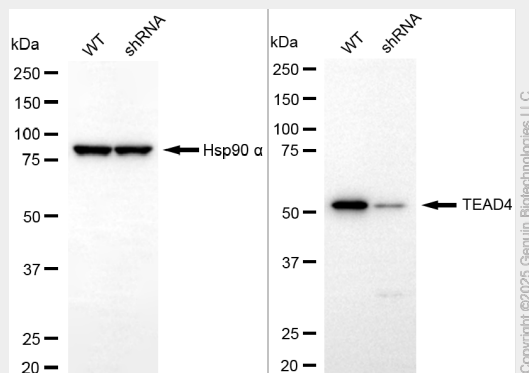
Provided below are standard protocols that you may find useful for product applications.

- [Western Blot](#)
- [Blocking Peptides](#)
- [Dot Blot](#)
- [Immunohistochemistry](#)
- [Immunofluorescence](#)
- [Immunoprecipitation](#)
- [Flow Cytometry](#)
- [Cell Culture](#)

KD-Validated Anti-TEAD4 Rabbit Monoclonal Antibody - Images



Western blotting analysis using anti-TEAD4 antibody (Cat#AGI2273). Total cell lysates (30 µg) from various cell lines were loaded and separated by SDS-PAGE. The blot was incubated with anti-TEAD4 antibody (Cat#AGI2273, 1:5,000) and HRP-conjugated goat anti-rabbit secondary antibody respectively.



Western blotting analysis using anti-TEAD4 antibody (Cat#AGI2273). TEAD4 expression in wild

type (WT) and TEAD4 knockdown (KD) HepG2 cells with 20 µg of total cell lysates. Hsp90 α serves as a loading control. The blot was incubated with anti-TEAD4 antibody (Cat#AGI2273, 1:5,000) and HRP-conjugated goat anti-rabbit secondary antibody respectively.