

**KD-Validated Anti-TXNDC9 Rabbit Monoclonal Antibody**  
**Rabbit monoclonal antibody**  
**Catalog # AGI2276****Specification****KD-Validated Anti-TXNDC9 Rabbit Monoclonal Antibody - Product Information**

Application	WB
Primary Accession	<a href="#">O14530</a>
Reactivity	Rat, Human, Mouse
Clonality	Monoclonal
Isotype	Rabbit IgG
Calculated MW	Predicted, 27 kDa; observed, 27 kDa kDa
Gene Name	TXNDC9
Aliases	TXNDC9; Thioredoxin Domain Containing 9; APACD; Thioredoxin Domain-Containing Protein 9; Protein 1-4; ATP Binding Protein Associated With Cell Differentiation; ATP-Binding Protein Associated With Cell Differentiation; PHLP3
Immunogen	A synthesized peptide derived from human TXNDC9

**KD-Validated Anti-TXNDC9 Rabbit Monoclonal Antibody - Additional Information**

Gene ID	10190
<b>Other Names</b>	
Thioredoxin domain-containing protein 9, ATP-binding protein associated with cell differentiation, Protein 1-4, TXNDC9, APACD	

**KD-Validated Anti-TXNDC9 Rabbit Monoclonal Antibody - Protein Information****Name** TXNDC9**Synonyms** APACD**Function**

Significantly diminishes the chaperonin TCP1 complex ATPase activity, thus negatively impacts protein folding, including that of actin or tubulin.

**Cellular Location**

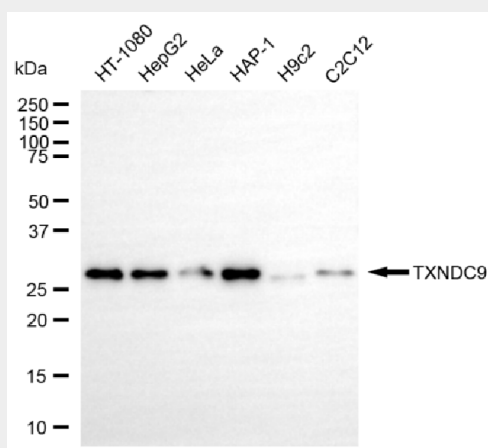
Cytoplasm {ECO:0000250|UniProtKB:Q9CQ79}. Nucleus {ECO:0000250|UniProtKB:Q9CQ79}. Cytoplasm, cytoskeleton, microtubule organizing center, centrosome {ECO:0000250|UniProtKB:Q9CQ79}. Midbody {ECO:0000250|UniProtKB:Q9CQ79}. Note=Co-localizes with beta-tubulin in the centrosome. {ECO:0000250|UniProtKB:Q9CQ79}

**KD-Validated Anti-TXNDC9 Rabbit Monoclonal Antibody - Protocols**

Provided below are standard protocols that you may find useful for product applications.

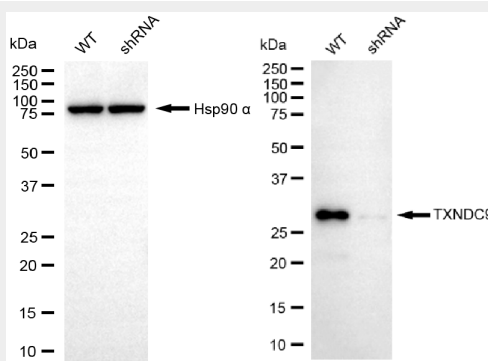
- [Western Blot](#)
- [Blocking Peptides](#)
- [Dot Blot](#)
- [Immunohistochemistry](#)
- [Immunofluorescence](#)
- [Immunoprecipitation](#)
- [Flow Cytometry](#)
- [Cell Culture](#)

## KD-Validated Anti-TXNDC9 Rabbit Monoclonal Antibody - Images



Copyright ©2025 Genuin Biotechnologies LLC

Western blotting analysis using anti-TXNDC9 antibody (Cat#AGI2276). Total cell lysates (30 µg) from various cell lines were loaded and separated by SDS-PAGE. The blot was incubated with anti-TXNDC9 antibody (Cat#AGI2276, 1:5,000) and HRP-conjugated goat anti-rabbit secondary antibody respectively.



Copyright ©2025 Genuin Biotechnologies LLC

Western blotting analysis using anti-TXNDC9 antibody (Cat#AGI2276). TXNDC9 expression in wild-type (WT) and TXNDC9 shRNA knockdown (KD) HeLa cells with 20 µg of total cell lysates. Hsp90 α serves as a loading control. The blot was incubated with anti-TXNDC9 antibody (Cat#AGI2276, 1:5,000) and HRP-conjugated goat anti-rabbit secondary antibody respectively.