

KD-Validated Anti-SNRPC Rabbit Monoclonal Antibody
Rabbit monoclonal antibody
Catalog # AGI2277**Specification****KD-Validated Anti-SNRPC Rabbit Monoclonal Antibody - Product Information**

Application	WB
Primary Accession	P09234
Reactivity	Rat, Human, Mouse
Clonality	Monoclonal
Isotype	Rabbit IgG
Calculated MW	Predicted, 17 kDa; observed, 19 kDa kDa
Gene Name	SNRPC
Aliases	SNRPC; Small Nuclear Ribonucleoprotein Polypeptide C; U1-C; Yhc1; U1 Small Nuclear Ribonucleoprotein C; U1 SnRNP C; U1C; U1 Small Nuclear RNP Specific C; U1 SnRNP Protein C
Immunogen	A synthesized peptide derived from human SNRPC

KD-Validated Anti-SNRPC Rabbit Monoclonal Antibody - Additional Information

Gene ID	6631
Other Names	
U1 small nuclear ribonucleoprotein C {ECO:0000255 HAMAP-Rule:MF_03153}, U1 snRNP C {ECO:0000255 HAMAP-Rule:MF_03153}, U1-C {ECO:0000255 HAMAP-Rule:MF_03153}, U1C {ECO:0000255 HAMAP-Rule:MF_03153}, SNRPC {ECO:0000255 HAMAP-Rule:MF_03153}	

KD-Validated Anti-SNRPC Rabbit Monoclonal Antibody - Protein Information

Name SNRPC {ECO:0000255|HAMAP-Rule:MF_03153}

Function

Component of the spliceosomal U1 snRNP, which is essential for recognition of the pre-mRNA 5' splice-site and the subsequent assembly of the spliceosome. SNRPC/U1-C is directly involved in initial 5' splice-site recognition for both constitutive and regulated alternative splicing. The interaction with the 5' splice-site seems to precede base-pairing between the pre-mRNA and the U1 snRNA. Stimulates commitment or early (E) complex formation by stabilizing the base pairing of the 5' end of the U1 snRNA and the 5' splice-site region.

Cellular Location

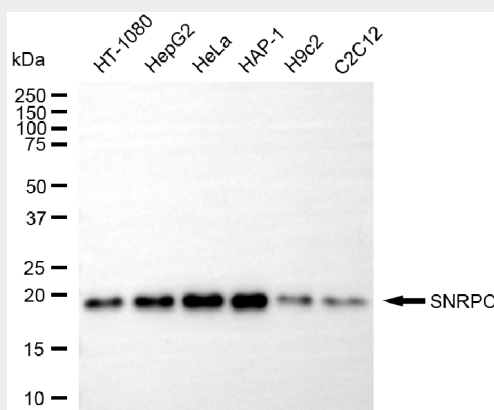
Nucleus {ECO:0000255|HAMAP-Rule:MF_03153, ECO:0000269|PubMed:2136774}

KD-Validated Anti-SNRPC Rabbit Monoclonal Antibody - Protocols

Provided below are standard protocols that you may find useful for product applications.

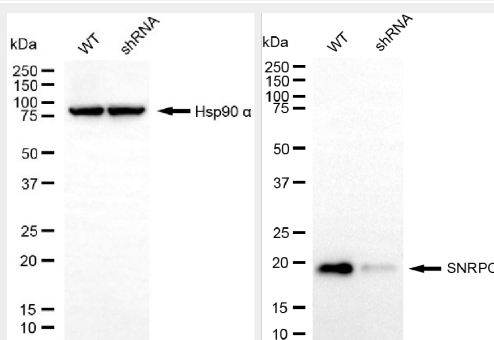
- [Western Blot](#)
- [Blocking Peptides](#)
- [Dot Blot](#)
- [Immunohistochemistry](#)
- [Immunofluorescence](#)
- [Immunoprecipitation](#)
- [Flow Cytometry](#)
- [Cell Culture](#)

KD-Validated Anti-SNRPC Rabbit Monoclonal Antibody - Images



Copyright ©2025 Genuin Biotechnologies LLC

Western blotting analysis using anti-SNRPC antibody (Cat#65623). Total cell lysates (30 µg) from various cell lines were loaded and separated by SDS-PAGE. The blot was incubated with anti-SNRPC antibody (Cat#65623, 1:5,000) and HRP-conjugated goat anti-rabbit secondary antibody (Cat#201, 1:20,000) respectively. Image was developed using NaQ™ ECL Substrate Kit (Cat#716).



Copyright ©2025 Genuin Biotechnologies LLC

Western blotting analysis using anti-SNRPC antibody (Cat#65623). SNRPC expression in wild-type (WT) and SNRPC shRNA knockdown (KD) HeLa cells with 30 µg of total cell lysates. Hsp90 α serves as a loading control. The blot was incubated with anti-SNRPC antibody (Cat#65623, 1:5,000) and HRP-conjugated goat anti-rabbit secondary antibody (Cat#201, 1:20,000) respectively. Image was developed using NaQ™ ECL Substrate Kit (Cat#716).