

KD-Validated Anti-MRPS18B Rabbit Monoclonal Antibody
Rabbit monoclonal antibody
Catalog # AGI2282**Specification****KD-Validated Anti-MRPS18B Rabbit Monoclonal Antibody - Product Information**

| | |
|-------------------|--|
| Application | WB |
| Primary Accession | Q9Y676 |
| Reactivity | Rat, Human, Mouse |
| Clonality | Monoclonal |
| Isotype | Rabbit IgG |
| Calculated MW | Predicted, 29 kDa; observed, 29 kDa kDa |
| Gene Name | MRPS18B |
| Aliases | MRPS18B; Mitochondrial Ribosomal Protein S18B; C6orf14; MRPS18-2; HSPC183; PTD017; MS40; 28S Ribosomal Protein S18-2, Mitochondrial; 28S Ribosomal Protein S18b, Mitochondrial; Small Ribosomal Subunit Protein BS18b; Small Ribosomal Subunit Protein MS40; MRP-S18-2; MRP-S18-B; Mrps18-B; S18mt-B; Mitochondrial Small Ribosomal Subunit Protein BS18m-B; Mitochondrial Small Ribosomal Subunit Protein BS18b; Mitochondrial Small Ribosomal Subunit Protein MS40; Mitochondrial Ribosomal Protein S18-2; HumanS18a; S18amt |
| Immunogen | Recombinant protein of human MRPS18B |

KD-Validated Anti-MRPS18B Rabbit Monoclonal Antibody - Additional Information

| | |
|--------------------|---|
| Gene ID | 28973 |
| Other Names | Small ribosomal subunit protein mS40, 28S ribosomal protein S18-2, mitochondrial, MRP-S18-2, 28S ribosomal protein S18b, mitochondrial, MRP-S18-b, Mrps18-b, S18mt-b, Small ribosomal subunit protein bS18b, MRPS18B, C6orf14 |

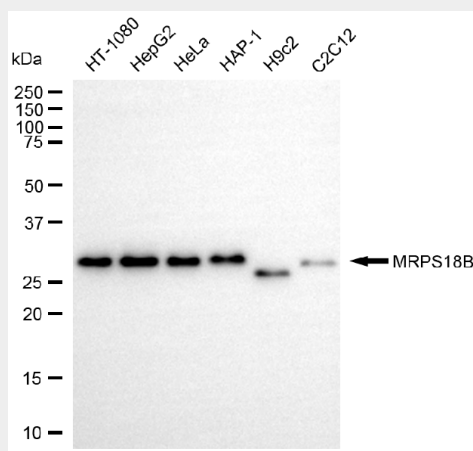
KD-Validated Anti-MRPS18B Rabbit Monoclonal Antibody - Protein Information**Name** MRPS18B**Synonyms** C6orf14**Cellular Location**
Mitochondrion.

KD-Validated Anti-MRPS18B Rabbit Monoclonal Antibody - Protocols

Provided below are standard protocols that you may find useful for product applications.

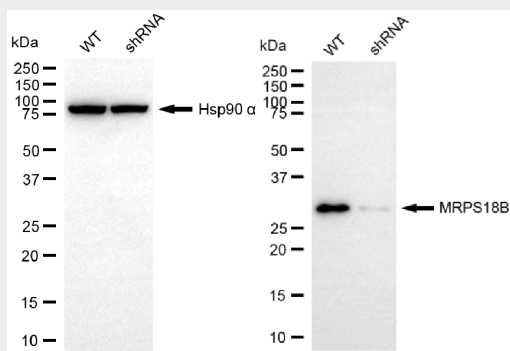
- [Western Blot](#)
- [Blocking Peptides](#)
- [Dot Blot](#)
- [Immunohistochemistry](#)
- [Immunofluorescence](#)
- [Immunoprecipitation](#)
- [Flow Cytometry](#)
- [Cell Culture](#)

KD-Validated Anti-MRPS18B Rabbit Monoclonal Antibody - Images



Copyright ©2025 Genuin Biotechnologies LLC

Western blotting analysis using anti-MRPS18B antibody (Cat#AGI2282). Total cell lysates (30 µg) from various cell lines were loaded and separated by SDS-PAGE. The blot was incubated with anti-MRPS18B antibody (Cat#AGI2282, 1:5,000) and HRP-conjugated goat anti-rabbit secondary antibody respectively.



Copyright ©2025 Genuin Biotechnologies LLC

Western blotting analysis using anti-MRPS18B antibody (Cat#AGI2282). MRPS18B expression in wild-type (WT) and MRPS18B shRNA knockdown (KD) HeLa cells with 20 µg of total cell lysates. Hsp90 α serves as a loading control. The blot was incubated with anti-MRPS18B antibody (Cat#AGI2282, 1:5,000) and HRP-conjugated goat anti-rabbit secondary antibody respectively.