

KD-Validated Anti-NR2F2 Rabbit Monoclonal Antibody
Rabbit monoclonal antibody
Catalog # AGI2283**Specification****KD-Validated Anti-NR2F2 Rabbit Monoclonal Antibody - Product Information**

Application	WB
Primary Accession	P24468
Reactivity	Rat, Human, Mouse
Clonality	Monoclonal
Isotype	Rabbit IgG
Calculated MW	Predicted, 46 kDa; observed, 46 kDa kDa
Gene Name	NR2F2
Aliases	NR2F2; Nuclear Receptor Subfamily 2 Group F Member 2; COUP Transcription Factor II; COUP-TFII; ARP-1; Chicken Ovalbumin Upstream Promoter Transcription Factor 2; Chicken Ovalbumin Upstream Promoter-Transcription Factor I; Nuclear Receptor Subfamily 2, Group F, Member 2; ADP-Ribosylation Factor Related Protein 1; Apolipoprotein A-I Regulatory Protein 1; COUP-TF II; COUP-TFII; COUP-TF2; CHTD4; SRXX5
Immunogen	A synthesized peptide derived from human NR2F2

KD-Validated Anti-NR2F2 Rabbit Monoclonal Antibody - Additional Information

Gene ID	7026
Other Names	COUP transcription factor 2, COUP-TF2, Apolipoprotein A-I regulatory protein 1, ARP-1, COUP transcription factor II, COUP-TF II, Nuclear receptor subfamily 2 group F member 2, NR2F2, ARP1, TFCOUP2

KD-Validated Anti-NR2F2 Rabbit Monoclonal Antibody - Protein Information**Name** NR2F2**Synonyms** ARP1, TFCOUP2**Function**

Ligand-activated transcription factor. Activated by high concentrations of 9-cis-retinoic acid and all-trans-retinoic acid, but not by dexamethasone, cortisol or progesterone (in vitro). Regulation of the apolipoprotein A-I gene transcription. Binds to DNA site A. May be required to establish ovary

identity during early gonad development (PubMed:29478779).

Cellular Location

Nucleus.

Tissue Location

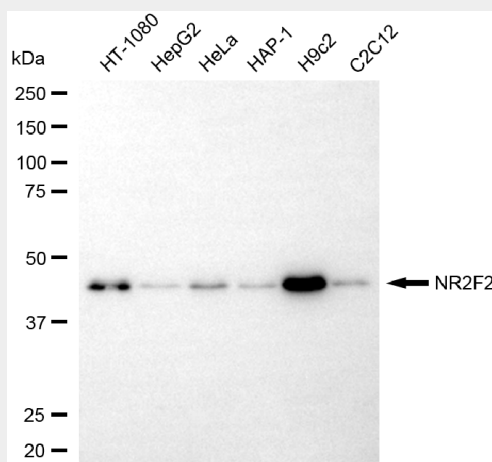
Ubiquitous. Expressed in the stromal cells of developing fetal ovaries (PubMed:29478779)

KD-Validated Anti-NR2F2 Rabbit Monoclonal Antibody - Protocols

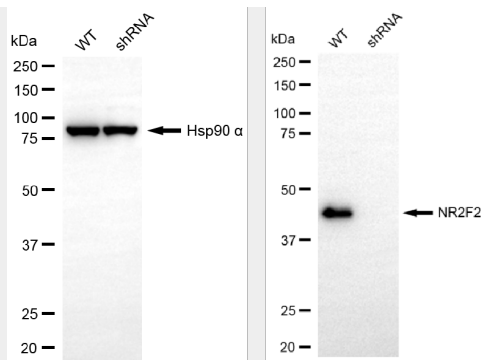
Provided below are standard protocols that you may find useful for product applications.

- [Western Blot](#)
- [Blocking Peptides](#)
- [Dot Blot](#)
- [Immunohistochemistry](#)
- [Immunofluorescence](#)
- [Immunoprecipitation](#)
- [Flow Cytometry](#)
- [Cell Culture](#)

KD-Validated Anti-NR2F2 Rabbit Monoclonal Antibody - Images



Western blotting analysis using anti-NR2F2 antibody (Cat#AGI2283). Total cell lysates (30 µg) from various cell lines were loaded and separated by SDS-PAGE. The blot was incubated with anti-NR2F2 antibody (Cat#AGI2283, 1:5,000) and HRP-conjugated goat anti-rabbit secondary antibody respectively.



Copyright ©2025 Genuin Biotechnologies LLC

Western blotting analysis using anti-NR2F2 antibody (Cat#AGI2283). NR2F2 expression in wild-type (WT) and NR2F2 shRNA knockdown (KD) HeLa cells with 20 µg of total cell lysates. Hsp90 α serves as a loading control. The blot was incubated with anti-NR2F2 antibody (Cat#AGI2283, 1:5,000) and HRP-conjugated goat anti-rabbit secondary antibody respectively.