

KD-Validated Anti-EEF1A2 Rabbit Monoclonal Antibody
Rabbit monoclonal antibody
Catalog # AGI2291**Specification****KD-Validated Anti-EEF1A2 Rabbit Monoclonal Antibody - Product Information**

| | |
|-------------------|--|
| Application | WB |
| Primary Accession | Q05639 |
| Reactivity | Human |
| Clonality | Monoclonal |
| Isotype | Rabbit IgG |
| Calculated MW | Predicted, 50 kDa; observed, 48-50 kDa |
| Gene Name | KDa |
| Aliases | EEF1A2 |
| | EEF1A2; Eukaryotic Translation Elongation Factor 1 Alpha 2; EEF1AL; HS1; STN; Eukaryotic Elongation Factor 1 A-2; Elongation Factor 1-Alpha 2; EF-1-Alpha-2; Statin-S1; STNL; Statin-Like; EEF1A-2; Statin; EIEE33; DEE33; MRD38; EF1A |
| Immunogen | A synthesized peptide derived from human EEF1A2 |

KD-Validated Anti-EEF1A2 Rabbit Monoclonal Antibody - Additional Information

| | |
|--|------|
| Gene ID | 1917 |
| Other Names | |
| Elongation factor 1-alpha 2, EF-1-alpha-2, 3.6.5.-, Eukaryotic elongation factor 1 A-2, eEF1A-2, Statin-S1, EEF1A2 {ECO:0000303 PubMed:10950927, ECO:0000312 HGNC:HGNC:3192} | |

KD-Validated Anti-EEF1A2 Rabbit Monoclonal Antibody - Protein Information

Name EEF1A2 {ECO:0000303|PubMed:10950927, ECO:0000312|HGNC:HGNC:3192}

Function

Translation elongation factor that catalyzes the GTP- dependent binding of aminoacyl-tRNA (aa-tRNA) to the A-site of ribosomes during the elongation phase of protein synthesis. Base pairing between the mRNA codon and the aa-tRNA anticodon promotes GTP hydrolysis, releasing the aa-tRNA from EEF1A1 and allowing its accommodation into the ribosome (By similarity). The growing protein chain is subsequently transferred from the P-site peptidyl tRNA to the A-site aa-tRNA, extending it by one amino acid through ribosome- catalyzed peptide bond formation (By similarity).

Cellular Location

Endoplasmic reticulum membrane

Tissue Location

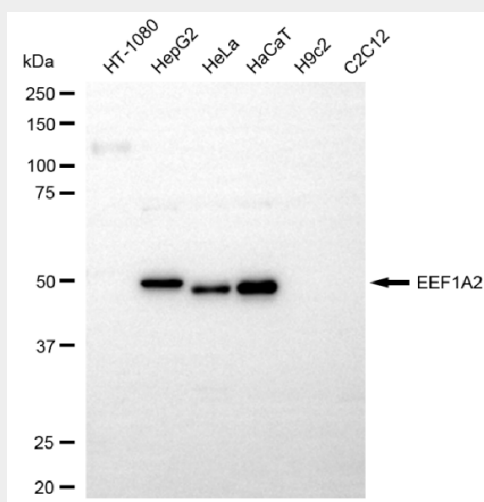
Brain, heart, and skeletal muscle.

KD-Validated Anti-EEF1A2 Rabbit Monoclonal Antibody - Protocols

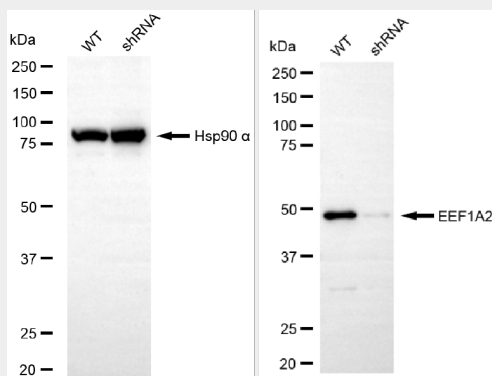
Provided below are standard protocols that you may find useful for product applications.

- [Western Blot](#)
- [Blocking Peptides](#)
- [Dot Blot](#)
- [Immunohistochemistry](#)
- [Immunofluorescence](#)
- [Immunoprecipitation](#)
- [Flow Cytometry](#)
- [Cell Culture](#)

KD-Validated Anti-EEF1A2 Rabbit Monoclonal Antibody - Images



Western blotting analysis using anti-EEF1A2 antibody (Cat#AGI2291). Total cell lysates (30 µg) from various cell lines were loaded and separated by SDS-PAGE. The blot was incubated with anti-EEF1A2 antibody (Cat#AGI2291, 1:5,000) and HRP-conjugated goat anti-rabbit secondary antibody respectively.



Western blotting analysis using anti-EEF1A2 antibody (Cat#AGI2291). EEF1A2 expression in wild-type (WT) and EEF1A2 shRNA knockdown (KD) HeLa cells with 20 µg of total cell lysates. Hsp90 α serves as a loading control. The blot was incubated with anti-EEF1A2 antibody (Cat#AGI2291, 1:5,000) and HRP-conjugated goat anti-rabbit secondary antibody respectively.