

**KD-Validated Anti-Cyclin A2 Rabbit Monoclonal Antibody**  
**Rabbit monoclonal antibody**  
**Catalog # AGI2302****Specification**

---

**KD-Validated Anti-Cyclin A2 Rabbit Monoclonal Antibody - Product Information**

Application	WB, FC, ICC
Primary Accession	<a href="#">P20248</a>
Reactivity	Rat, Human, Mouse
Clonality	Monoclonal
Isotype	Rabbit IgG
Calculated MW	Predicted, 49 kDa , observed, 50 kDa kDa
Gene Name	CCNA2
Aliases	CCNA2; Cyclin A2; CCN1; CCNA; Cyclin-A2; Cyclin-A; Cyclin A
Immunogen	A synthesized peptide derived from human Cyclin A2

**KD-Validated Anti-Cyclin A2 Rabbit Monoclonal Antibody - Additional Information**

Gene ID	890
<b>Other Names</b>	
Cyclin-A2 {ECO:0000312 HGNC:HGNC:1578}, Cyclin-A, Cyclin A, CCNA2 ( <a href="http://www.genenames.org/cgi-bin/gene_symbol_report?hgnc_id=1578" target="_blank">http://www.genenames.org/cgi-bin/gene_symbol_report?hgnc_id=1578</a> )	

**KD-Validated Anti-Cyclin A2 Rabbit Monoclonal Antibody - Protein Information****Name** CCNA2 ([HGNC:1578](#))**Function**

Cyclin which controls both the G1/S and the G2/M transition phases of the cell cycle. Functions through the formation of specific serine/threonine protein kinase holoenzyme complexes with the cyclin- dependent protein kinases CDK1 or CDK2. The cyclin subunit confers the substrate specificity of these complexes and differentially interacts with and activates CDK1 and CDK2 throughout the cell cycle.

**Cellular Location**

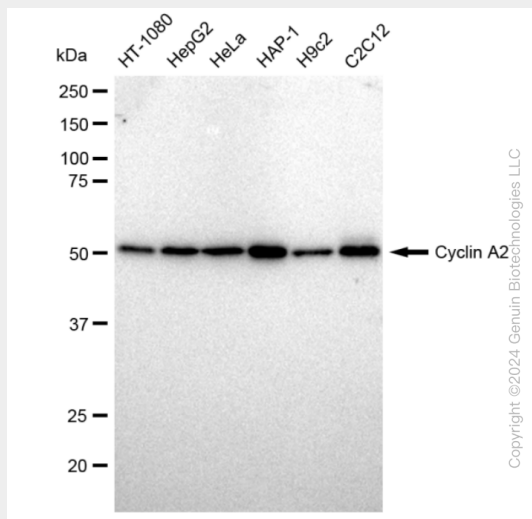
Nucleus. Cytoplasm. Note=Exclusively nuclear during interphase (PubMed:1312467). Detected in the nucleus and the cytoplasm at prophase (PubMed:1312467). Cytoplasmic when associated with SCAPER (PubMed:17698606).

**KD-Validated Anti-Cyclin A2 Rabbit Monoclonal Antibody - Protocols**

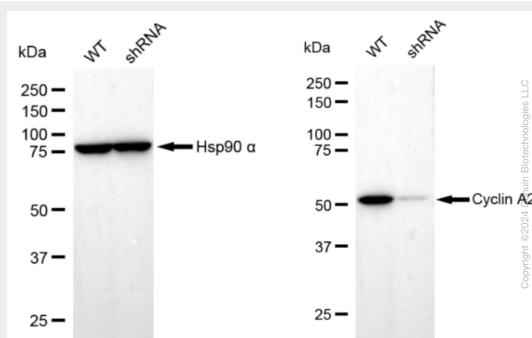
Provided below are standard protocols that you may find useful for product applications.

- [Western Blot](#)
- [Blocking Peptides](#)
- [Dot Blot](#)
- [Immunohistochemistry](#)
- [Immunofluorescence](#)
- [Immunoprecipitation](#)
- [Flow Cytometry](#)
- [Cell Culture](#)

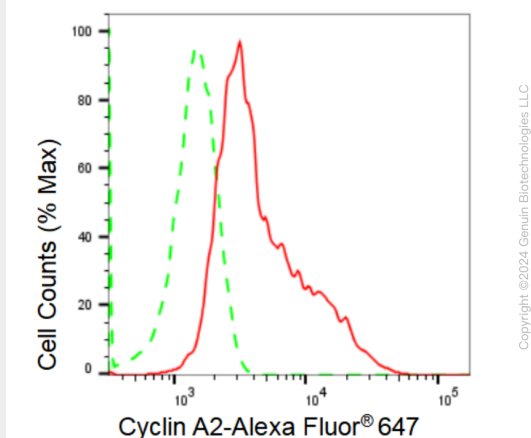
### KD-Validated Anti-Cyclin A2 Rabbit Monoclonal Antibody - Images



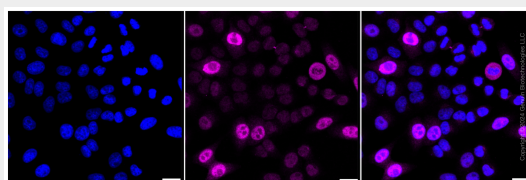
Western blotting analysis using anti-Cyclin A2 antibody (Cat#AGI2302). Total cell lysates (30 µg) from various cell lines were loaded and separated by SDS-PAGE. The blot was incubated with anti-Cyclin A2 antibody (Cat#AGI2302, 1:5,000) and HRP-conjugated goat anti-rabbit secondary antibody respectively.



Western blotting analysis using anti-Cyclin A2 antibody (Cat#AGI2302). Cyclin A2 expression in wild type (WT) and Cyclin A2 shRNA knockdown (KD) HeLa cells with 30 µg of total cell lysates. Hsp90 α serves as a loading control. The blot was incubated with anti-Cyclin A2 antibody (Cat#AGI2302, 1:5,000) and HRP-conjugated goat anti-rabbit secondary antibody respectively.



Flow cytometric analysis of Cyclin A2 expression in HepG2 cells using Cyclin A2 antibody (Cat#AGI2302, 1:2,000). Green, isotype control; red, Cyclin A2.



Immunocytochemical staining of HepG2 cells with Cyclin A2 antibody (Cat#AGI2302, 1:1,000). Nuclei were stained blue with DAPI; Cyclin A2 was stained magenta with Alexa Fluor® 647. Images were taken using Leica stellaris 5. Protein abundance based on laser Intensity and smart gain: High. Scale bar: 20 µm.