

**KD-Validated Anti-alpha smooth muscle Actin Rabbit Monoclonal Antibody**  
**Rabbit monoclonal antibody**  
**Catalog # AGI2304****Specification**

---

**KD-Validated Anti-alpha smooth muscle Actin Rabbit Monoclonal Antibody - Product Information**

Application	WB, FC, ICC
Primary Accession	<a href="#">P62736</a>
Reactivity	Rat, Human, Mouse
Clonality	Monoclonal
Isotype	Rabbit IgG
Calculated MW	Predicted, 42 kDa, observed, 42 kDa kDa
Gene Name	ACTA2
Aliases	ACTA2; Actin Alpha 2, Smooth Muscle; ACTSA; Cell Growth-Inhibiting Gene 46 Protein; Actin, Alpha 2, Smooth Muscle, Aorta; Actin, Aortic Smooth Muscle; Alpha-Cardiac Actin; Alpha-Actin-2; EC 3.6.4.-; ACTVS
Immunogen	A synthesized peptide derived from human alpha smooth muscle Actin

**KD-Validated Anti-alpha smooth muscle Actin Rabbit Monoclonal Antibody - Additional Information**

Gene ID	59
<b>Other Names</b>	
Actin, aortic smooth muscle, 3.6.4.-, Alpha-actin-2, Cell growth-inhibiting gene 46 protein, Actin, aortic smooth muscle, intermediate form, ACTA2, ACTSA, ACTVS	

**KD-Validated Anti-alpha smooth muscle Actin Rabbit Monoclonal Antibody - Protein Information****Name** ACTA2**Synonyms** ACTSA, ACTVS**Function**

Actins are highly conserved proteins that are involved in various types of cell motility and are ubiquitously expressed in all eukaryotic cells.

**Cellular Location**

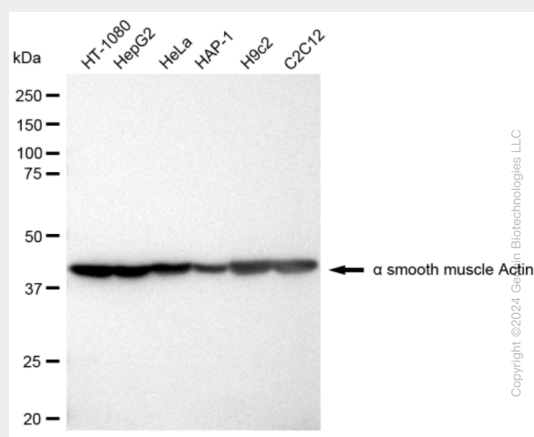
Cytoplasm, cytoskeleton.

**KD-Validated Anti-alpha smooth muscle Actin Rabbit Monoclonal Antibody - Protocols**

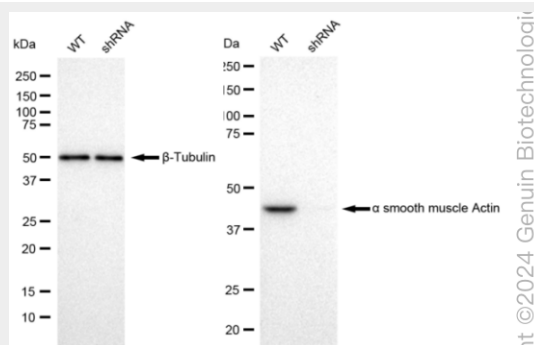
Provided below are standard protocols that you may find useful for product applications.

- [Western Blot](#)
- [Blocking Peptides](#)
- [Dot Blot](#)
- [Immunohistochemistry](#)
- [Immunofluorescence](#)
- [Immunoprecipitation](#)
- [Flow Cytometry](#)
- [Cell Culture](#)

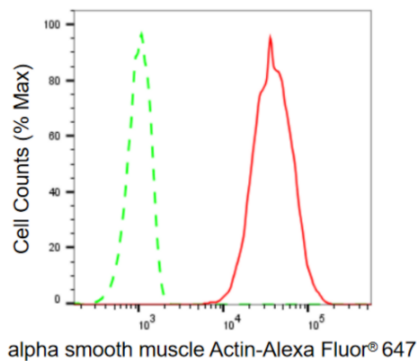
### KD-Validated Anti-alpha smooth muscle Actin Rabbit Monoclonal Antibody - Images



Western blotting analysis using anti-alpha smooth muscle Actin antibody (Cat#AGI2304). Total cell lysates (30 µg) from various cell lines were loaded and separated by SDS-PAGE. The blot was incubated with anti-alpha smooth muscle Actin antibody (Cat#AGI2304, 1:10,000) and HRP-conjugated goat anti-rabbit secondary antibody respectively.

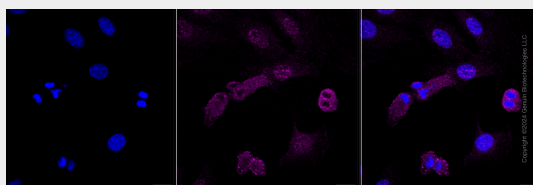


Western blotting analysis using anti-alpha smooth muscle Actin antibody (Cat#AGI2304). alpha smooth muscle Actin antibody expression in wild type (WT) and alpha smooth muscle Actin antibody shRNA knockdown (KD) HeLa cells with 30 µg of total cell lysates. beta-Tubulin serves as a loading control. The blot was incubated with anti-alpha smooth muscle Actin antibody (Cat#AGI2304, 1:10,000) and HRP-conjugated goat anti-rabbit secondary antibody respectively.



Copyright ©2024 Genun Biotechnologies LLC

Flow cytometric analysis of alpha smooth muscle Actin expression in HT-1080 cells using alpha smooth muscle Actin antibody (Cat#AGI2304, 1:2,000). Green, isotype control; red, alpha smooth muscle Actin.



Copyright ©2024 Genun Biotechnologies LLC

Immunocytochemical staining of HT-1080 cells with alpha smooth muscle Actin antibody (Cat#AGI2304, 1:1,000). Nuclei were stained blue with DAPI; alpha smooth muscle Actin was stained magenta with Alexa Fluor® 647. Images were taken using Leica stellaris 5. Protein abundance based on laser Intensity and smart gain: High. Scale bar: 20  $\mu$ m.