

KD-Validated Anti-MCM7 Rabbit Monoclonal Antibody
Rabbit monoclonal antibody
Catalog # AGI2318**Specification****KD-Validated Anti-MCM7 Rabbit Monoclonal Antibody - Product Information**

Application	WB, FC, ICC
Primary Accession	P33993
Reactivity	Rat, Human
Clonality	Monoclonal
Isotype	Rabbit IgG
Calculated MW	Predicted, 81 kDa ; Observed, 81 kDa KDa
Gene Name	MCM7
Aliases	Minichromosome Maintenance Complex Component 7; CDC47; PPP1R104; MCM2; Protein Phosphatase 1, Regulatory Subunit 104; DNA Replication Licensing Factor MCM7; CDC47 Homolog; P1.1-MCM3; MCM7 Minichromosome Maintenance Deficient 7 (S. Cerevisiae); Minichromosome Maintenance Deficient (S. Cerevisiae) 7; Minichromosome Maintenance Deficient 7; Homolog Of S. Cerevisiae Cdc47; EC 3.6.4.12; P1CDC47; PNAS146; P85MCM
Immunogen	A synthesized peptide derived from human MCM7

KD-Validated Anti-MCM7 Rabbit Monoclonal Antibody - Additional Information

Gene ID	4176
Other Names	
DNA replication licensing factor MCM7, 3.6.4.12, CDC47 homolog, P1.1-MCM3, MCM7 (HGNC:6950), CDC47, MCM2	

KD-Validated Anti-MCM7 Rabbit Monoclonal Antibody - Protein Information**Name** MCM7 ([HGNC:6950](#))**Synonyms** CDC47, MCM2**Function**

Acts as a component of the MCM2-7 complex (MCM complex) which is the replicative helicase essential for 'once per cell cycle' DNA replication initiation and elongation in eukaryotic cells. Core component of CDC45-MCM-GINS (CMG) helicase, the molecular machine that unwinds template DNA during replication, and around which the replisome is built (PubMed:25661590, PubMed:32453425, PubMed:32453425, PubMed:32453425)

[34694004](http://www.uniprot.org/citations/34694004), PubMed: [34700328](http://www.uniprot.org/citations/34700328), PubMed: [35585232](http://www.uniprot.org/citations/35585232), PubMed: [9305914](http://www.uniprot.org/citations/9305914)). The active ATPase sites in the MCM2-7 ring are formed through the interaction surfaces of two neighboring subunits such that a critical structure of a conserved arginine finger motif is provided in trans relative to the ATP-binding site of the Walker A box of the adjacent subunit. The six ATPase active sites, however, are likely to contribute differentially to the complex helicase activity (PubMed: [32453425](http://www.uniprot.org/citations/32453425)). Required for S-phase checkpoint activation upon UV-induced damage.

Cellular Location

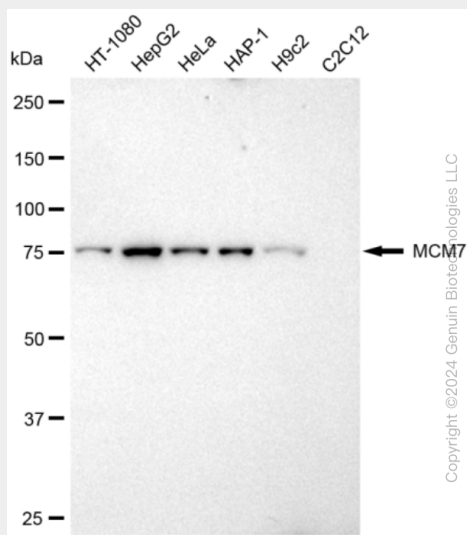
Nucleus. Chromosome. Note=Associated with chromatin before the formation of nuclei and detaches from it as DNA replication progresses.

KD-Validated Anti-MCM7 Rabbit Monoclonal Antibody - Protocols

Provided below are standard protocols that you may find useful for product applications.

- [Western Blot](#)
- [Blocking Peptides](#)
- [Dot Blot](#)
- [Immunohistochemistry](#)
- [Immunofluorescence](#)
- [Immunoprecipitation](#)
- [Flow Cytometry](#)
- [Cell Culture](#)

KD-Validated Anti-MCM7 Rabbit Monoclonal Antibody - Images



Western blotting analysis using anti-MCM7 antibody (Cat#68157). Total cell lysates (30 µg) from various cell lines were loaded and separated by SDS-PAGE. The blot was incubated with anti-MCM7 antibody (Cat#68157, 1:5,000) and HRP-conjugated goat anti-rabbit secondary antibody (Cat#201, 1:50,000) respectively. Image was developed using FeQ™ ECL Substrate Kit (Cat#226).

