

**KD-Validated Anti-PRKRA Rabbit Monoclonal Antibody**  
**Rabbit monoclonal antibody**  
**Catalog # AGI2320****Specification****KD-Validated Anti-PRKRA Rabbit Monoclonal Antibody - Product Information**

Application	WB, ICC
Primary Accession	<a href="#">075569</a>
Reactivity	Rat, Human, Mouse
Clonality	Monoclonal
Isotype	Rabbit IgG
Calculated MW	Predicted, 34 kDa ; Observed, 34 kDa KDa
Gene Name	PRKRA
Aliases	PRKRA; Protein Activator Of Interferon Induced Protein Kinase EIF2AK2; PACT; RAX; Protein Activator Of The Interferon-Induced Protein Kinase; PKR-Associated Protein X ; HSD14 ; DYT16; Interferon-Inducible Double-Stranded RNA-Dependent Protein Kinase Activator A; Protein Kinase, Interferon-Inducible Double-Stranded RNA-Dependent Activator; PKR-Associating Protein X; Protein Kinase, Interferon-Inducible Double Stranded RNA Dependent Activator
Immunogen	A synthesized peptide derived from human PRKRA

**KD-Validated Anti-PRKRA Rabbit Monoclonal Antibody - Additional Information**

Gene ID 8575

**Other Names**

Interferon-inducible double-stranded RNA-dependent protein kinase activator A, PKR-associated protein X, PKR-associating protein X, Protein activator of the interferon-induced protein kinase, Protein kinase, interferon-inducible double-stranded RNA-dependent activator, PRKRA, PACT, RAX

**KD-Validated Anti-PRKRA Rabbit Monoclonal Antibody - Protein Information****Name** PRKRA**Synonyms** PACT, RAX**Function**

Activates EIF2AK2/PKR in the absence of double-stranded RNA (dsRNA), leading to phosphorylation of EIF2S1/EIF2-alpha and inhibition of translation and induction of apoptosis. Required for siRNA production by DICER1 and for subsequent siRNA-mediated post-transcriptional gene silencing. Does not seem to be required for processing of pre-miRNA to miRNA by DICER1. Promotes UBC9-p53/TP53 association and sumoylation and phosphorylation of p53/TP53 at 'Lys- 386' at

'Ser-392' respectively and enhances its activity in a EIF2AK2/PKR-dependent manner (By similarity).

#### Cellular Location

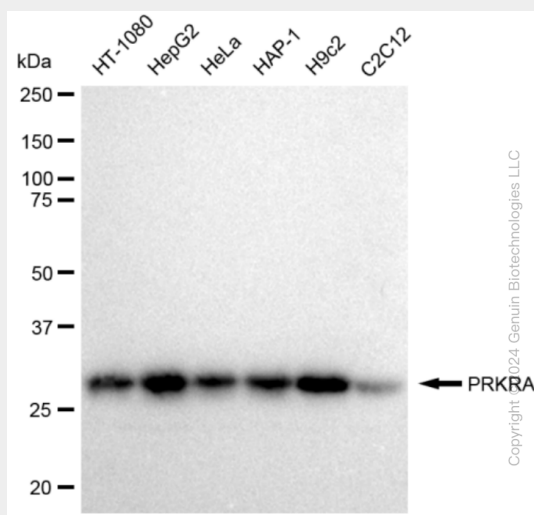
Cytoplasm, perinuclear region. Cytoplasm.

### KD-Validated Anti-PRKRA Rabbit Monoclonal Antibody - Protocols

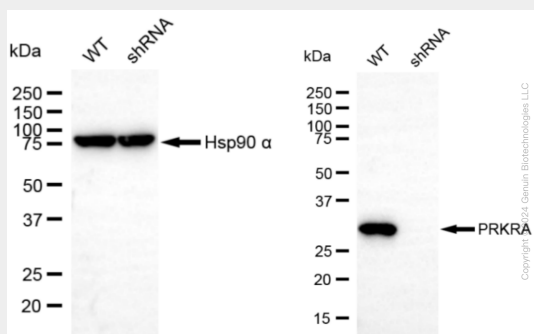
Provided below are standard protocols that you may find useful for product applications.

- [Western Blot](#)
- [Blocking Peptides](#)
- [Dot Blot](#)
- [Immunohistochemistry](#)
- [Immunofluorescence](#)
- [Immunoprecipitation](#)
- [Flow Cytometry](#)
- [Cell Culture](#)

### KD-Validated Anti-PRKRA Rabbit Monoclonal Antibody - Images

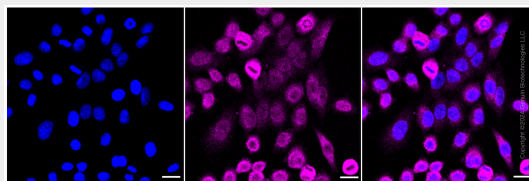


Western blotting analysis using anti-PRKRA antibody (Cat#AGI2320). Total cell lysates (30 µg) from various cell lines were loaded and separated by SDS-PAGE. The blot was incubated with anti-PRKRA antibody (Cat#AGI2320, 1:5,000) and HRP-conjugated goat anti-rabbit secondary antibody respectively.



Western blotting analysis using anti-PRKRA antibody (Cat#AGI2320). PRKRA expression in wild

type (WT) and PRKRA shRNA knockdown (KD) HeLa cells with 30  $\mu$ g of total cell lysates. Hsp90  $\alpha$  serves as a loading control. The blot was incubated with anti-PRKRA antibody (Cat#AGI2320, 1:5,000) and HRP-conjugated goat anti-rabbit secondary antibody respectively.



Immunocytochemical staining of HepG2 cells with PRKRA antibody (Cat#AGI2320, 1:1,000). Nuclei were stained blue with DAPI; PRKRA was stained magenta with Alexa Fluor® 647. Images were taken using Leica stellaris 5. Protein abundance based on laser Intensity and smart gain: Medium. Scale bar: 20  $\mu$ m.