

KD-Validated Anti-Flotillin 1 Rabbit Monoclonal Antibody
Rabbit monoclonal antibody
Catalog # AGI2327**Specification**

KD-Validated Anti-Flotillin 1 Rabbit Monoclonal Antibody - Product Information

Application	WB, FC, ICC
Primary Accession	O75955
Reactivity	Rat, Human, Mouse
Clonality	Monoclonal
Isotype	Rabbit IgG
Calculated MW	Predicted, 47 kDa ; Observed, 48 kDa KDa
Gene Name	FLOT1
Aliases	Flotillin 1; Flotillin-1; Integral Membrane Component Of Caveolae
Immunogen	A synthesized peptide derived from human Flotillin 1

KD-Validated Anti-Flotillin 1 Rabbit Monoclonal Antibody - Additional Information

Gene ID	10211
Other Names	
Flotillin-1, FLOT1	

KD-Validated Anti-Flotillin 1 Rabbit Monoclonal Antibody - Protein Information**Name** FLOT1**Function**

May act as a scaffolding protein within caveolar membranes, functionally participating in formation of caveolae or caveolae-like vesicles.

Cellular Location

Cell membrane; Peripheral membrane protein. Endosome Membrane, caveola {ECO:0000250|UniProtKB:O08917}; Peripheral membrane protein {ECO:0000250|UniProtKB:O08917}. Melanosome. Membrane raft. Note=Identified by mass spectrometry in melanosome fractions from stage I to stage IV (PubMed:17081065) Membrane-associated protein of caveola (By similarity) {ECO:0000250|UniProtKB:O08917, ECO:0000269|PubMed:17081065}

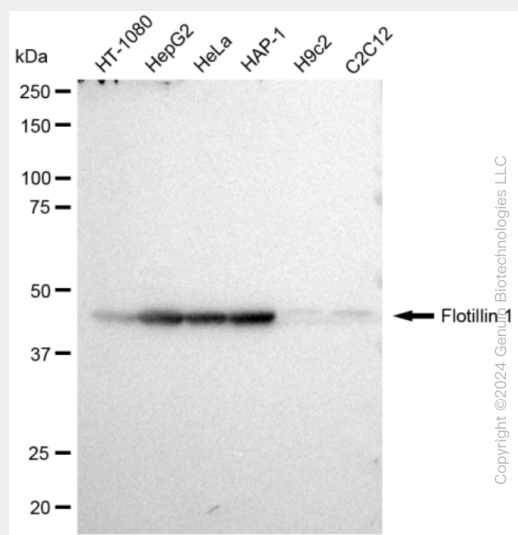
KD-Validated Anti-Flotillin 1 Rabbit Monoclonal Antibody - Protocols

Provided below are standard protocols that you may find useful for product applications.

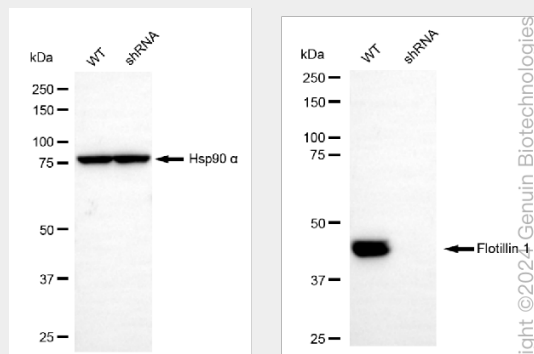
- [Western Blot](#)
- [Blocking Peptides](#)

- [Dot Blot](#)
- [Immunohistochemistry](#)
- [Immunofluorescence](#)
- [Immunoprecipitation](#)
- [Flow Cytometry](#)
- [Cell Culture](#)

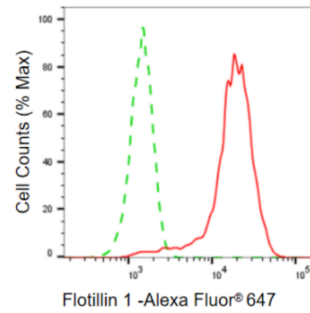
KD-Validated Anti-Flotillin 1 Rabbit Monoclonal Antibody - Images



Western blotting analysis using anti-Flotillin 1 antibody (Cat#AGI2327). Total cell lysates (30 µg) from various cell lines were loaded and separated by SDS-PAGE. The blot was incubated with anti-Flotillin 1 antibody (Cat#AGI2327, 1:10,000) and HRP-conjugated goat anti-rabbit secondary antibody respectively.

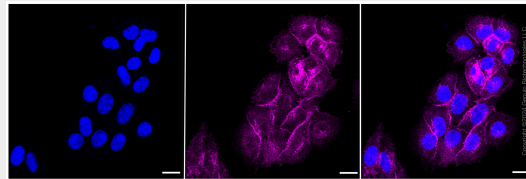


Western blotting analysis using anti-Flotillin 1 antibody (Cat#AGI2327). Flotillin 1 expression in wild type (WT) and Flotillin 1 shRNA knockdown (KD) HeLa cells with 30 µg of total cell lysates. β-Tubulin serves as a loading control. The blot was incubated with anti-Flotillin 1 antibody (Cat#AGI2327, 1:10,000) and HRP-conjugated goat anti-rabbit secondary antibody respectively.



Copyright ©2024 Genual Biotechnologies LLC

Flow cytometric analysis of Flotillin 1 expression in HepG2 cells using anti-Flotillin 1 antibody (Cat#AGI2327, 1:2,000). Green, isotype control; red, Flotillin 1.



Copyright ©2024 Genual Biotechnologies LLC

Immunocytochemical staining of HepG2 cells with Flotillin 1 antibody (Cat#AGI2327, 1:1,000). Nuclei were stained blue with DAPI; Flotillin 1 was stained magenta with Alexa Fluor® 647. Images were taken using Leica stellaris 5. Protein abundance based on laser Intensity and smart gain: Medium. Scale bar: 20 µm.