

**KD-Validated Anti-Bone morphogenetic protein 6 Rabbit Monoclonal Antibody**  
**Rabbit monoclonal antibody**  
**Catalog # AGI2332****Specification****KD-Validated Anti-Bone morphogenetic protein 6 Rabbit Monoclonal Antibody - Product Information**

Application	WB, FC, ICC
Primary Accession	<a href="#">P22004</a>
Reactivity	Rat, Human, Mouse
Clonality	Monoclonal
Isotype	Rabbit IgG
Calculated MW	Predicted, 57 kDa ; Observed, 42 kDa KDa
Gene Name	BMP6
Aliases	BMP6; Bone Morphogenetic Protein 6; VGR1; VGR; Vegetal Related Growth Factor (TGFB-Related); VG-1-Related Protein; VG-1-R; BMP-6; VGR-1; IO
Immunogen	A synthesized peptide derived from human BMP6

**KD-Validated Anti-Bone morphogenetic protein 6 Rabbit Monoclonal Antibody - Additional Information**

Gene ID	654
<b>Other Names</b>	
Bone morphogenetic protein 6, BMP-6, VG-1-related protein, VG-1-R, VGR-1, BMP6, VGR	

**KD-Validated Anti-Bone morphogenetic protein 6 Rabbit Monoclonal Antibody - Protein Information****Name** BMP6**Synonyms** VGR**Function**

Growth factor of the TGF-beta superfamily that plays essential roles in many developmental processes including cartilage and bone formation (PubMed: [31019025](http://www.uniprot.org/citations/31019025)). Also plays an important role in the regulation of HAMP/hepcidin expression and iron metabolism by acting as a ligand for hemojuvelin/HJV (PubMed: [26582087](http://www.uniprot.org/citations/26582087)). Also acts to promote expression of HAMP, potentially via the interaction with its receptor BMPRI1/ALK3 (PubMed: [30097509](http://www.uniprot.org/citations/30097509), PubMed: [31800957](http://www.uniprot.org/citations/31800957)). Initiates the canonical BMP signaling cascade by associating with type I receptor ACVR1 and type II receptor ACVR2B (PubMed: [18070108](http://www.uniprot.org/citations/18070108)). In turn, ACVR1 propagates signal by phosphorylating

SMAD1/5/8 that travel to the nucleus and act as activators and repressors of transcription of target. Can also signal through non-canonical pathway such as TAZ-Hippo signaling cascade to modulate VEGF signaling by regulating VEGFR2 expression (PubMed:<a href="http://www.uniprot.org/citations/33021694" target="\_blank">33021694</a>).

#### Cellular Location

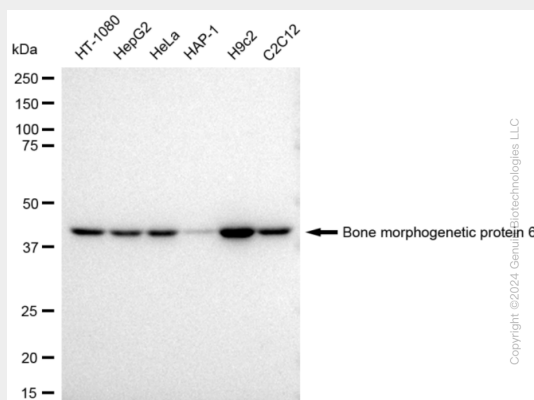
Secreted.

### KD-Validated Anti-Bone morphogenetic protein 6 Rabbit Monoclonal Antibody - Protocols

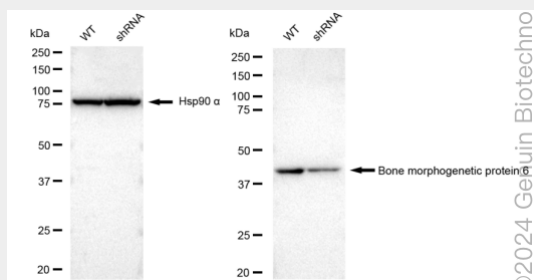
Provided below are standard protocols that you may find useful for product applications.

- [Western Blot](#)
- [Blocking Peptides](#)
- [Dot Blot](#)
- [Immunohistochemistry](#)
- [Immunofluorescence](#)
- [Immunoprecipitation](#)
- [Flow Cytometry](#)
- [Cell Culture](#)

### KD-Validated Anti-Bone morphogenetic protein 6 Rabbit Monoclonal Antibody - Images

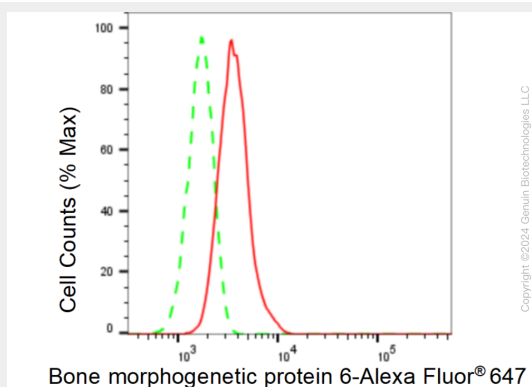


Western blotting analysis using anti-Bone morphogenetic protein 6 antibody (Cat#AGI2332). Total cell lysates (30 µg) from various cell lines were loaded and separated by SDS-PAGE. The blot was incubated with anti-Bone morphogenetic protein 6 antibody (Cat#AGI2332, 1:5,000) and HRP-conjugated goat anti-rabbit secondary antibody respectively.

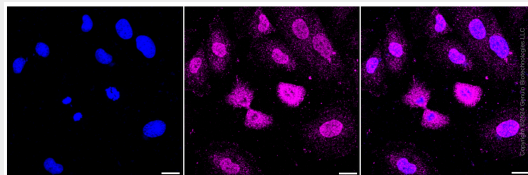


Western blotting analysis using anti-Bone morphogenetic protein 6 antibody (Cat#AGI2332). Bone morphogenetic protein 6 expression in wild type (WT) and Bone morphogenetic protein 6 shRNA knockdown (KD) HeLa cells with 30 µg of total cell lysates. Hsp90 α serves as a loading control. The blot was incubated with anti-Bone morphogenetic protein 6 antibody (Cat#AGI2332, 1:5,000) and HRP-conjugated goat anti-rabbit secondary antibody respectively.

1:5,000) and HRP-conjugated goat anti-rabbit secondary antibody respectively.



Flow cytometric analysis of Bone morphogenetic protein 6 expression in H9c2 cells using Bone morphogenetic protein 6 antibody (Cat#AGI2332, 1:2,000). Green, isotype control; red, Bone morphogenetic protein 6.



Immunocytochemical staining of H9c2 cells with Bone morphogenetic protein 6 antibody (Cat#AGI2332, 1:1,000). Nuclei were stained blue with DAPI; Bone morphogenetic protein 6 was stained magenta with Alexa Fluor® 647. Images were taken using Leica stellaris 5. Protein abundance based on laser Intensity and smart gain: Medium. Scale bar: 20  $\mu$ m.