

KD-Validated Anti-BAG cochaperone 3 Rabbit Monoclonal Antibody
Rabbit monoclonal antibody
Catalog # AGI2344**Specification****KD-Validated Anti-BAG cochaperone 3 Rabbit Monoclonal Antibody - Product Information**

Application	WB, FC, ICC
Primary Accession	O95817
Reactivity	Human, Mouse
Clonality	Monoclonal
Isotype	Rabbit IgG
Calculated MW	Predicted, 62 kDa ; Observed, 80 kDa
Gene Name	KDa BAG3
Aliases	BAG3; BAG Cochaperone 3; BAG Family Molecular Chaperone Regulator 3; BCL2 Associated Athanogene 3; Bcl-2-Binding Protein Bis; Docking Protein CAIR-1; BAG-3; BIS; Bcl-2-Binding Protein BIS Transcript 2; Bcl-2-Associated Athanogene 3; BCL2-Binding Athanogene 3; CAIR-1; MFM6
Immunogen	A synthesized peptide derived from human Bag3

KD-Validated Anti-BAG cochaperone 3 Rabbit Monoclonal Antibody - Additional Information

Gene ID	9531
Other Names	
BAG family molecular chaperone regulator 3, BAG-3, Bcl-2-associated athanogene 3, Bcl-2-binding protein Bis, Docking protein CAIR-1, BAG3, BIS	

KD-Validated Anti-BAG cochaperone 3 Rabbit Monoclonal Antibody - Protein Information**Name** BAG3**Synonyms** BIS**Function**

Co-chaperone and adapter protein that connects different classes of molecular chaperones including heat shock proteins 70 (HSP70s), e.g. HSPA1A/HSP70 or HSPA8/HSC70, and small heat shock proteins (sHSPs), e.g. HSPB8 (PubMed: [27884606](http://www.uniprot.org/citations/27884606) target="_blank">27884606, PubMed: [30559338](http://www.uniprot.org/citations/30559338) target="_blank">30559338). Acts as a nucleotide-exchange factor (NEF) promoting the release of ADP from HSP70s, thereby triggering client protein release (PubMed: [27884606](http://www.uniprot.org/citations/27884606) target="_blank">27884606, PubMed: [30559338](http://www.uniprot.org/citations/30559338) target="_blank">30559338). Nucleotide release is mediated via BAG3 binding to the nucleotide-binding domain (NBD) of HSP70s, whereas

client release is mediated via binding to the substrate-binding domain (SBD) (PubMed:27474739, PubMed:9873016). Has anti-apoptotic activity (PubMed:10597216). Plays a role in the HSF1 nucleocytoplasmic transport (PubMed:26159920).

Cellular Location

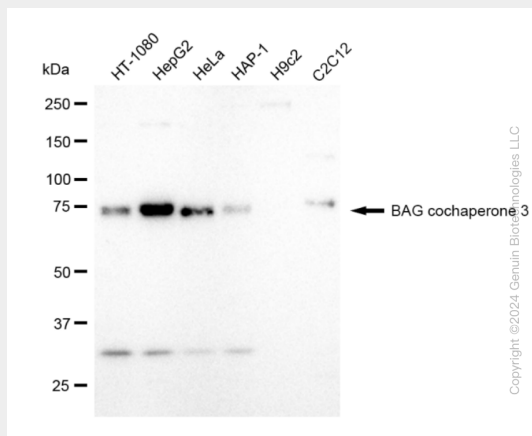
Nucleus. Cytoplasm. Note=Colocalizes with HSF1 to the nucleus upon heat stress (PubMed:26159920)

KD-Validated Anti-BAG cochaperone 3 Rabbit Monoclonal Antibody - Protocols

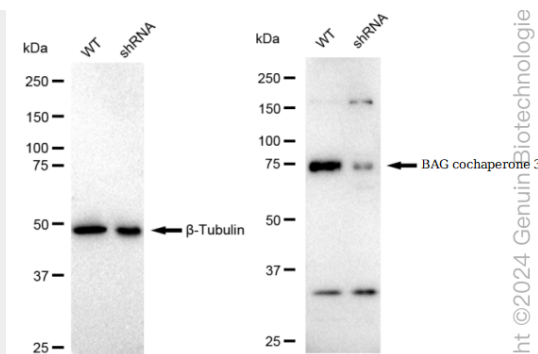
Provided below are standard protocols that you may find useful for product applications.

- [Western Blot](#)
- [Blocking Peptides](#)
- [Dot Blot](#)
- [Immunohistochemistry](#)
- [Immunofluorescence](#)
- [Immunoprecipitation](#)
- [Flow Cytometry](#)
- [Cell Culture](#)

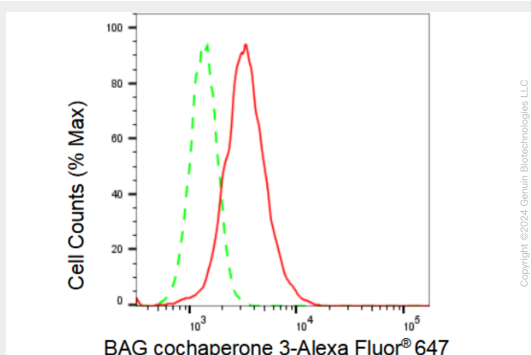
KD-Validated Anti-BAG cochaperone 3 Rabbit Monoclonal Antibody - Images



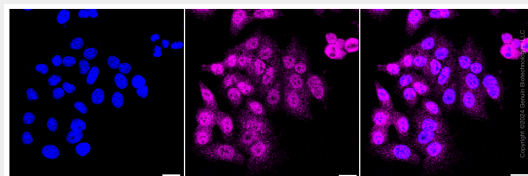
Western blotting analysis using anti-BAG cochaperone 3 antibody (Cat#AGI2344). Total cell lysates (30 µg) from various cell lines were loaded and separated by SDS-PAGE. The blot was incubated with anti-BAG cochaperone 3 antibody (Cat#AGI2344, 1:5,000) and HRP-conjugated goat anti-rabbit secondary antibody respectively.



Western blotting analysis using anti-BAG cochaperone 3 antibody (Cat#AGI2344). BAG cochaperone 3 expression in wild type (WT) and BAG cochaperone 3 shRNA knockdown (KD) HeLa cells with 30 µg of total cell lysates. β-Tubulin serves as a loading control. The blot was incubated with anti-BAG cochaperone 3 antibody (Cat#AGI2344, 1:5,000) and HRP-conjugated goat anti-rabbit secondary antibody respectively.



Flow cytometric analysis of BAG cochaperone 3 expression in HepG2 cells using BAG cochaperone 3 antibody (Cat#AGI2344, 1:2,000). Green, isotype control; red, BAG cochaperone 3.



Immunocytochemical staining of HepG2 cells with BAG cochaperone 3 antibody (Cat#AGI2344, 1:1,000). Nuclei were stained blue with DAPI; BAG cochaperone 3 was stained magenta with Alexa Fluor® 647. Images were taken using Leica stellaris 5. Protein abundance based on laser Intensity and smart gain: Medium. Scale bar: 20 µm.