

**KD-Validated Anti-Angio associated migratory cell protein Rabbit Monoclonal Antibody**  
**Rabbit monoclonal antibody**  
**Catalog # AGI2346****Specification**

---

**KD-Validated Anti-Angio associated migratory cell protein Rabbit Monoclonal Antibody - Product Information**

Application	WB
Primary Accession	<a href="#">Q13685</a>
Reactivity	Rat, Human, Mouse
Clonality	Monoclonal
Isotype	Rabbit IgG
Calculated MW	Predicted, 47 kDa ; Observed, 52 kDa KDa
Gene Name	AAMP
Aliases	AAMP; Angio Associated Migratory Cell Protein; Angio-Associated Migratory Cell Protein
Immunogen	A synthesized peptide derived from human AAMP

**KD-Validated Anti-Angio associated migratory cell protein Rabbit Monoclonal Antibody - Additional Information**

Gene ID	14
<b>Other Names</b>	
Angio-associated migratory cell protein, AAMP	

**KD-Validated Anti-Angio associated migratory cell protein Rabbit Monoclonal Antibody - Protein Information****Name** AAMP**Function**

Plays a role in angiogenesis and cell migration. In smooth muscle cell migration, may act through the RhoA pathway.

**Cellular Location**

Cell membrane. Cytoplasm.

**Tissue Location**

Expressed in metastatic melanoma, liver, skin, kidney, heart, lung, lymph node, skeletal muscle and brain, and also in A2058 melanoma cells and activated T-cells (at protein level) Expressed in blood vessels. Strongly expressed in endothelial cells, cytotrophoblasts, and poorly differentiated. colon adenocarcinoma cells found in lymphatics.

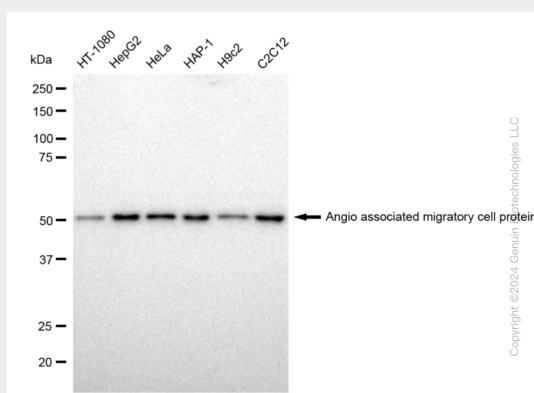
**KD-Validated Anti-Angio associated migratory cell protein Rabbit Monoclonal Antibody -**

## Protocols

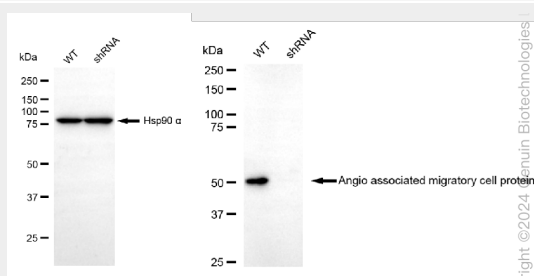
Provided below are standard protocols that you may find useful for product applications.

- [Western Blot](#)
- [Blocking Peptides](#)
- [Dot Blot](#)
- [Immunohistochemistry](#)
- [Immunofluorescence](#)
- [Immunoprecipitation](#)
- [Flow Cytometry](#)
- [Cell Culture](#)

### KD-Validated Anti-Angio associated migratory cell protein Rabbit Monoclonal Antibody - Images



Western blotting analysis using anti-Angio associated migratory cell protein antibody (Cat#69156). Total cell lysates (30  $\mu$ g) from various cell lines were loaded and separated by SDS-PAGE. The blot was incubated with anti-Angio associated migratory cell protein antibody (Cat#69156, 1:5,000) and HRP-conjugated goat anti-rabbit secondary antibody (Cat#201, 1:20,000) respectively. Image was developed using FeQ™ ECL Substrate Kit (Cat#226).



Western blotting analysis using anti-Angio associated migratory cell protein antibody (Cat#69156). Angio associated migratory cell protein expression in wild type (WT) and angio associated migratory cell protein shRNA knockdown (KD) HeLa cells with 30  $\mu$ g of total cell lysates.  $\beta$ -Tubulin serves as a loading control. The blot was incubated with anti-Angio associated migratory cell protein antibody (Cat#69156, 1:5,000) and HRP-conjugated goat anti-rabbit secondary antibody (Cat#201, 1:20,000) respectively. Image was developed using FeQ™ ECL Substrate Kit (Cat#226).