

**KD-Validated Anti-ADK Rabbit Monoclonal Antibody**  
**Rabbit monoclonal antibody**  
**Catalog # AGI2354****Specification**

---

**KD-Validated Anti-ADK Rabbit Monoclonal Antibody - Product Information**

Application	WB, ICC
Primary Accession	<a href="#">P55263</a>
Reactivity	Human, Mouse
Clonality	Monoclonal
Isotype	Rabbit IgG
Calculated MW	Predicted, 41 kDa; Observed, 46 kDa
Gene Name	KDa
Aliases	ADK
	ADK; Adenosine Kinase; AK; Adenosine 5'-Phosphotransferase; EC 2.7.1.20; Testicular Tissue Protein Li 14; EC 2.7.1
Immunogen	A synthesized peptide derived from human ADK

**KD-Validated Anti-ADK Rabbit Monoclonal Antibody - Additional Information**

Gene ID	132
<b>Other Names</b>	
Adenosine kinase, AK, 2.7.1.20, Adenosine 5'-phosphotransferase, ADK (<a href="http://www.genenames.org/cgi-bin/gene_symbol_report?hgnc_id=257" target="_blank">HGNC:257</a>)	

**KD-Validated Anti-ADK Rabbit Monoclonal Antibody - Protein Information****Name** ADK ([HGNC:257](#))**Function**

Catalyzes the phosphorylation of the purine nucleoside adenosine at the 5' position in an ATP-dependent manner. Serves as a potential regulator of concentrations of extracellular adenosine and intracellular adenine nucleotides.

**Cellular Location**

[Isoform 1]: Nucleus

**Tissue Location**

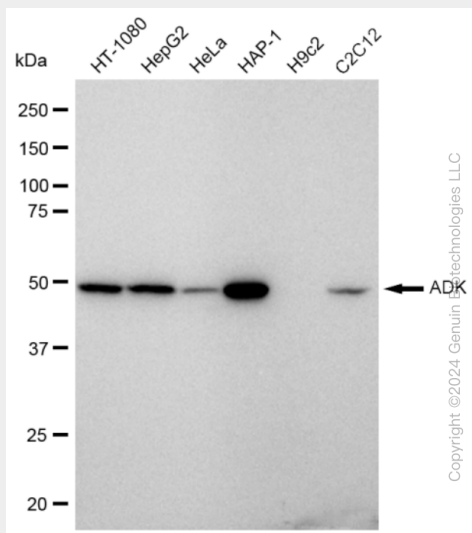
Widely expressed. Highest level in placenta, liver, muscle and kidney.

**KD-Validated Anti-ADK Rabbit Monoclonal Antibody - Protocols**

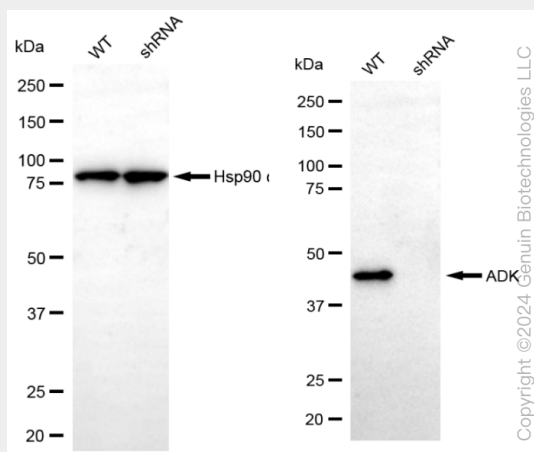
Provided below are standard protocols that you may find useful for product applications.

- [Western Blot](#)
- [Blocking Peptides](#)
- [Dot Blot](#)
- [Immunohistochemistry](#)
- [Immunofluorescence](#)
- [Immunoprecipitation](#)
- [Flow Cytometry](#)
- [Cell Culture](#)

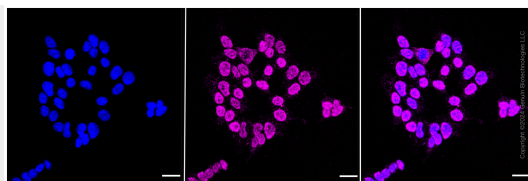
## KD-Validated Anti-ADK Rabbit Monoclonal Antibody - Images



Western blotting analysis using anti-ADK antibody (Cat#AGI2354). Total cell lysates (30 µg) from various cell lines were loaded and separated by SDS-PAGE. The blot was incubated with anti-ADK antibody (Cat#AGI2354, 1:5,000) and HRP-conjugated goat anti rabbit secondary antibody respectively.



Western blotting analysis using anti-ADK antibody (Cat#AGI2354). ADK expression in wild type (WT) and ADK shRNA knockdown (KD) HeLa cells with 30 µg of total cell lysates.  $\beta$ -Tubulin serves as a loading control. The blot was incubated with anti-ADK antibody (Cat#AGI2354, 1:5,000) and HRP-conjugated goat anti rabbit secondary antibody respectively.



Immunocytochemical staining of HAP-1 cells with ADK antibody (Cat#AGI2354, 1:1,000). Nuclei were stained blue with DAPI; ADK was stained magenta with Alexa Fluor® 647. Images were taken using Leica stellaris 5. Protein abundance based on laser Intensity and smart gain: Medium. Scale bar: 20  $\mu$ m.