

KD-Validated Anti-Annexin A7 Rabbit Monoclonal Antibody
Rabbit monoclonal antibody
Catalog # AGI2371**Specification**

KD-Validated Anti-Annexin A7 Rabbit Monoclonal Antibody - Product Information

Application	WB, FC, ICC
Primary Accession	P20073
Reactivity	Human
Clonality	Monoclonal
Isotype	Rabbit IgG
Calculated MW	Predicted, 53 kDa ; Observed, 50 kDa KDa
Gene Name	ANXA7
Aliases	ANXA7; Annexin A7; ANX7; Annexin VII; Annexin-7 ; SNX; SYNEXIN; Synexin
Immunogen	A synthesized peptide derived from human Annexin A7

KD-Validated Anti-Annexin A7 Rabbit Monoclonal Antibody - Additional Information

Gene ID	310
Other Names	
Annexin A7, Annexin VII, Annexin-7, Synexin, ANXA7, ANX7, SNX	

KD-Validated Anti-Annexin A7 Rabbit Monoclonal Antibody - Protein Information**Name** ANXA7**Synonyms** ANX7, SNX**Function**

Calcium/phospholipid-binding protein which promotes membrane fusion and is involved in exocytosis.

Tissue Location

Isoform 1 is expressed in brain, heart and skeletal muscle. Isoform 2 is more abundant in liver, lung, kidney, spleen, fibroblasts and placenta.

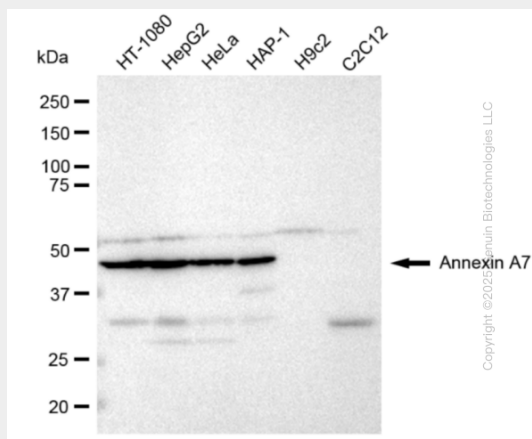
KD-Validated Anti-Annexin A7 Rabbit Monoclonal Antibody - Protocols

Provided below are standard protocols that you may find useful for product applications.

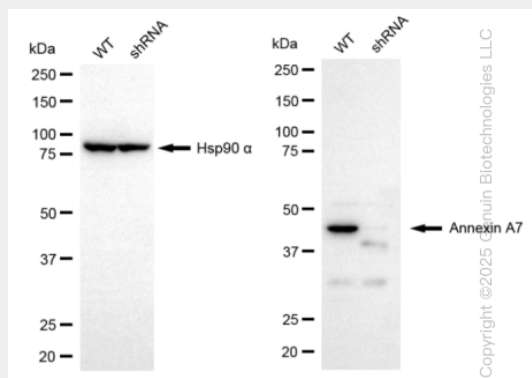
- [Western Blot](#)
- [Blocking Peptides](#)
- [Dot Blot](#)
- [Immunohistochemistry](#)

- [Immunofluorescence](#)
- [Immunoprecipitation](#)
- [Flow Cytometry](#)
- [Cell Culture](#)

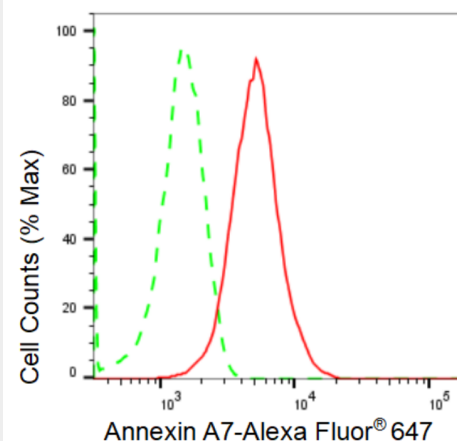
KD-Validated Anti-Annexin A7 Rabbit Monoclonal Antibody - Images



Western blotting analysis using anti-Annexin A7 antibody (Cat#AGI2371). Total cell lysates (30 µg) from various cell lines were loaded and separated by SDS-PAGE. The blot was incubated with anti-Annexin A7 antibody (Cat#AGI2371, 1:5,000) and HRP-conjugated goat anti-rabbit secondary antibody respectively.

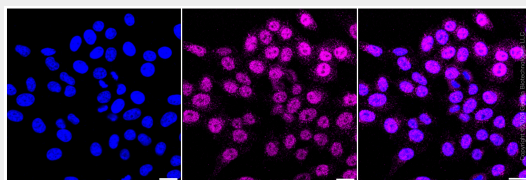


Western blotting analysis using anti-Annexin A7 antibody (Cat#AGI2371). Annexin A7 expression in wild type (WT) and Annexin A7 shRNA knockdown (KD) HeLa cells with 30 µg of total cell lysates. Hsp90 α serves as a loading control. The blot was incubated with anti-Annexin A7 antibody (Cat#AGI2371, 1:5,000) and HRP-conjugated goat anti-rabbit secondary antibody respectively.



Copyright ©2024 Genuin Biotechnologies LLC

Flow cytometric analysis of Annexin A7 expression in HepG2 cells using Annexin A7 antibody (Cat#AGI2371, 1:2,000). Green, isotype control; red, Annexin A7.



Immunocytochemical staining of HepG2 cells with Annexin A7 antibody (Cat#AGI2371, 1:1,000). Nuclei were stained blue with DAPI; Annexin A7 was stained magenta with Alexa Fluor® 647. Images were taken using Leica stellaris 5. Protein abundance based on laser Intensity and smart gain: Medium. Scale bar: 20 µm.