

KD-Validated Anti-Annexin V Rabbit Monoclonal Antibody
Rabbit monoclonal antibody
Catalog # AGI2372**Specification**

KD-Validated Anti-Annexin V Rabbit Monoclonal Antibody - Product Information

Application	WB, FC, ICC
Primary Accession	P08758
Reactivity	Rat, Human, Mouse
Clonality	Monoclonal
Isotype	Rabbit IgG
Calculated MW	Predicted, 36 kDa; Observed, 30 kDa
Gene Name	KDa ANXA5
Aliases	ANXA5; Annexin A5; CPB-I; PAP-I; Placental Anticoagulant Protein I; Vascular Anticoagulant-Alpha; Calphobindin I; Endonexin II; Annexin V; VAC-Alpha; RPRGL3; ANX5; ENX2; Placental Anticoagulant Protein 4; Thromboplastin Inhibitor; Anchorin CII; Lipocortin V; VAC-Alpha; Annexin-5; PP4; Epididymis Secretory Protein Li 7; HEL-S-7; CBP-I
Immunogen	A synthesized peptide derived from human Annexin V

KD-Validated Anti-Annexin V Rabbit Monoclonal Antibody - Additional InformationGene ID **308****Other Names**

Annexin A5, Anchorin CII, Annexin V, Annexin-5, Calphobindin I, CPB-I, Endonexin II, Lipocortin V, Placental anticoagulant protein 4, PP4, Placental anticoagulant protein I, PAP-I, Thromboplastin inhibitor, Vascular anticoagulant-alpha, VAC-alpha, ANXA5, ANX5, ENX2, PP4

KD-Validated Anti-Annexin V Rabbit Monoclonal Antibody - Protein Information**Name** ANXA5**Synonyms** ANX5, ENX2, PP4**Function**

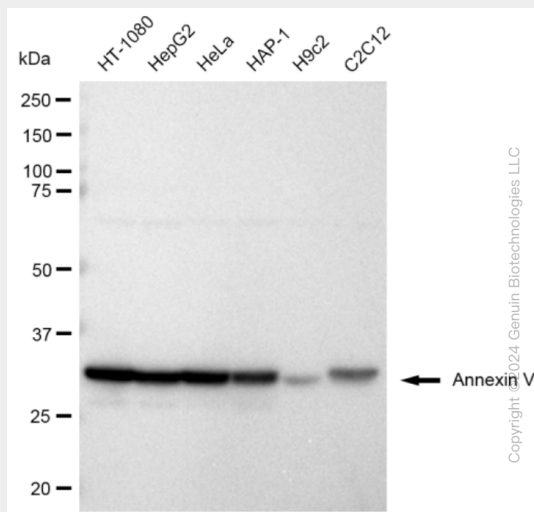
This protein is an anticoagulant protein that acts as an indirect inhibitor of the thromboplastin-specific complex, which is involved in the blood coagulation cascade.

KD-Validated Anti-Annexin V Rabbit Monoclonal Antibody - Protocols

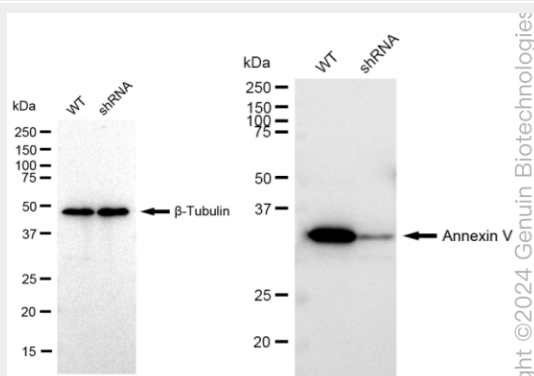
Provided below are standard protocols that you may find useful for product applications.

- [Western Blot](#)
- [Blocking Peptides](#)
- [Dot Blot](#)
- [Immunohistochemistry](#)
- [Immunofluorescence](#)
- [Immunoprecipitation](#)
- [Flow Cytometry](#)
- [Cell Culture](#)

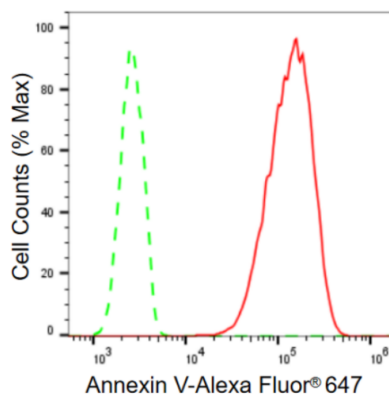
KD-Validated Anti-Annexin V Rabbit Monoclonal Antibody - Images



Western blotting analysis using anti-Annexin V antibody (Cat#AGI2372). Total cell lysates (30 µg) from various cell lines were loaded and separated by SDS-PAGE. The blot was incubated with anti-Annexin V antibody (Cat#AGI2372, 1:10,000) and HRP-conjugated goat anti rabbit secondary antibody respectively.

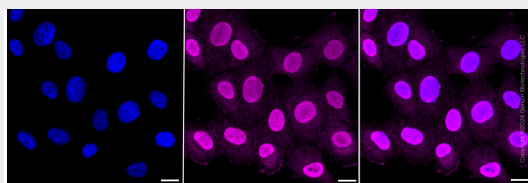


Western blotting analysis using anti-Annexin V antibody (Cat#AGI2372). Annexin V expression in wild type (WT) and Annexin V shRNA knockdown (KD) HeLa cells with 30 µg of total cell lysates. β-Tubulin serves as a loading control. The blot was incubated with anti-Annexin V antibody (Cat#AGI2372, 1:10,000) and HRP-conjugated goat anti rabbit secondary antibody respectively.



Copyright ©2024 Genuin Biotechnologies LLC

Flow cytometric analysis of Annexin V expression in HT-1080 cells using Annexin V antibody (Cat#AGI2372, 1:2,000). Green, isotype control; red, Annexin V.



Immunocytochemical staining of HT-1080 cells with Annexin V antibody (Cat#AGI2372, 1:1,000). Nuclei were stained blue with DAPI; Annexin V was stained magenta with Alexa Fluor® 647. Images were taken using Leica stellaris 5. Protein abundance based on laser Intensity and smart gain: High. Scale bar: 20 μ m.