

KD-Validated Anti-ERCC1 Rabbit Monoclonal Antibody
Rabbit monoclonal antibody
Catalog # AGI2374**Specification**

KD-Validated Anti-ERCC1 Rabbit Monoclonal Antibody - Product Information

Application	WB, ICC
Primary Accession	P07992
Reactivity	Human, Mouse
Clonality	Monoclonal
Isotype	Rabbit IgG
Calculated MW	Predicted, 33 kDa ; Observed, 36 kDa KDa
Gene Name	ERCC1
Aliases	ERCC Excision Repair 1, Endonuclease Non-Catalytic Subunit; RAD10; Excision Repair Cross-Complementing Rodent Repair Deficiency, Complementation Group 1 (Includes Overlapping Antisense Sequence); Excision Repair Cross-Complementation Group 1; DNA Excision Repair Protein ERCC-1; COFS4; UV20
Immunogen	A synthesized peptide derived from human ERCC1

KD-Validated Anti-ERCC1 Rabbit Monoclonal Antibody - Additional Information

Gene ID	2067
Other Names	
DNA excision repair protein ERCC-1, ERCC1	

KD-Validated Anti-ERCC1 Rabbit Monoclonal Antibody - Protein Information**Name** ERCC1**Function**

[Isoform 1]: Non-catalytic component of a structure-specific DNA repair endonuclease responsible for the 5'-incision during DNA repair. Responsible, in conjunction with SLX4, for the first step in the repair of interstrand cross-links (ICL). Participates in the processing of anaphase bridge-generating DNA structures, which consist in incompletely processed DNA lesions arising during S or G2 phase, and can result in cytokinesis failure. Also required for homology-directed repair (HDR) of DNA double-strand breaks, in conjunction with SLX4.

Cellular Location

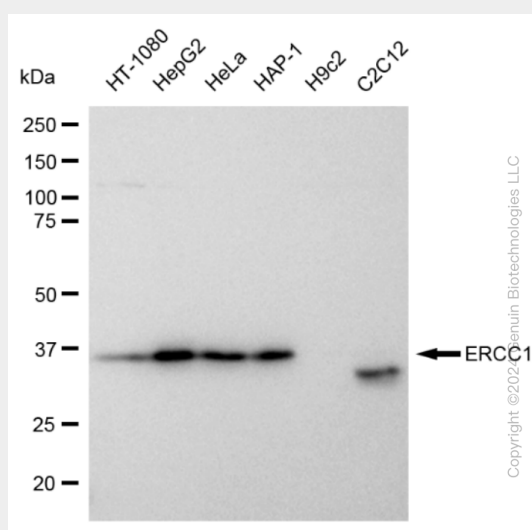
[Isoform 1]: Nucleus [Isoform 3]: Nucleus

KD-Validated Anti-ERCC1 Rabbit Monoclonal Antibody - Protocols

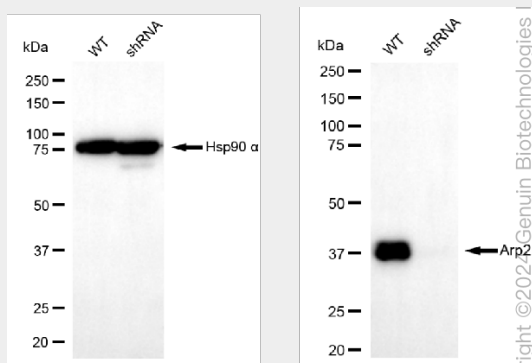
Provided below are standard protocols that you may find useful for product applications.

- [Western Blot](#)
- [Blocking Peptides](#)
- [Dot Blot](#)
- [Immunohistochemistry](#)
- [Immunofluorescence](#)
- [Immunoprecipitation](#)
- [Flow Cytometry](#)
- [Cell Culture](#)

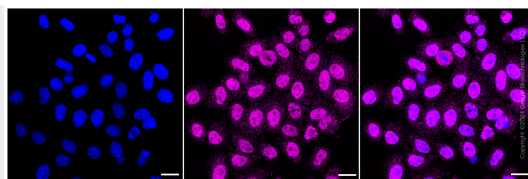
KD-Validated Anti-ERCC1 Rabbit Monoclonal Antibody - Images



Western blotting analysis using anti-ERCC1 antibody (Cat#AGI2374). Total cell lysates (30 µg) from various cell lines were loaded and separated by SDS-PAGE. The blot was incubated with anti-ERCC1 antibody (Cat#AGI2374, 1:5,000) and HRP-conjugated goat anti-rabbit secondary antibody respectively.



Western blotting analysis using anti-ERCC1 antibody (Cat#AGI2374). ERCC1 expression in wild type (WT) and ERCC1 shRNA knockdown (KD) HeLa cells with 30 µg of total cell lysates. β-Tubulin serves as a loading control. The blot was incubated with anti-ERCC1 antibody (Cat#AGI2374, 1:5,000) and HRP-conjugated goat anti-rabbit secondary antibody respectively.



Immunocytochemical staining of HepG2 cells with ERCC1 antibody (Cat#AGI2374, 1:1,000). Nuclei were stained blue with DAPI; ERCC1 was stained magenta with Alexa Fluor® 647. Images were taken using Leica stellaris 5. Protein abundance based on laser Intensity and smart gain: Medium. Scale bar: 20 μ m.