

**KD-Validated Anti-CRKII Rabbit Monoclonal Antibody**  
**Rabbit monoclonal antibody**  
**Catalog # AGI2377****Specification**

---

**KD-Validated Anti-CRKII Rabbit Monoclonal Antibody - Product Information**

Application	WB, FC, ICC
Primary Accession	<a href="#">P46108</a>
Reactivity	Rat, Human, Mouse
Clonality	Monoclonal
Isotype	Rabbit IgG
Calculated MW	Predicted, 34 kDa; Observed, 35 kDa
Gene Name	KDa
Aliases	CRK; CRK Proto-Oncogene, Adaptor Protein; V-Crk Avian Sarcoma Virus CT10 Oncogene Homolog; Adapter Molecule Crk; Proto-Oncogene C-Crk; P38; V-Crk Sarcoma Virus CT10 Oncogene-Like Protein; CRKII
Immunogen	A synthesized peptide derived from human CRKII

**KD-Validated Anti-CRKII Rabbit Monoclonal Antibody - Additional Information**

Gene ID	1398
<b>Other Names</b>	
Adapter molecule crk, Proto-oncogene c-Crk, p38, CRK	

**KD-Validated Anti-CRKII Rabbit Monoclonal Antibody - Protein Information****Name** CRK**Function**

Involved in cell branching and adhesion mediated by BCAR1- CRK-RAPGEF1 signaling and activation of RAP1.

**Cellular Location**

Cytoplasm. Cell membrane. Note=Translocated to the plasma membrane upon cell adhesion.

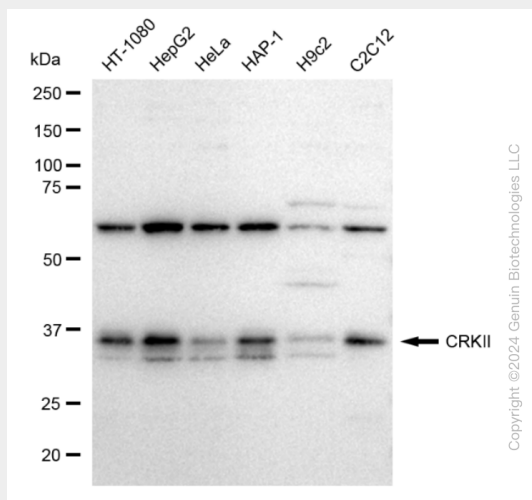
**KD-Validated Anti-CRKII Rabbit Monoclonal Antibody - Protocols**

Provided below are standard protocols that you may find useful for product applications.

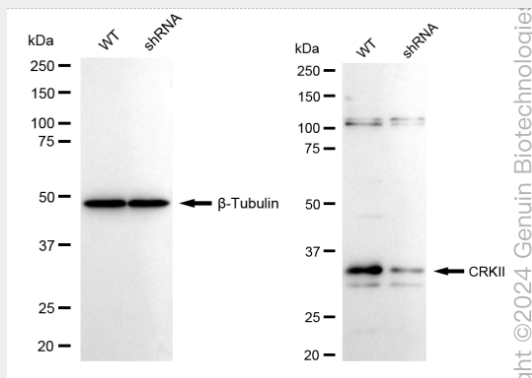
- [Western Blot](#)
- [Blocking Peptides](#)
- [Dot Blot](#)
- [Immunohistochemistry](#)

- [Immunofluorescence](#)
- [Immunoprecipitation](#)
- [Flow Cytometry](#)
- [Cell Culture](#)

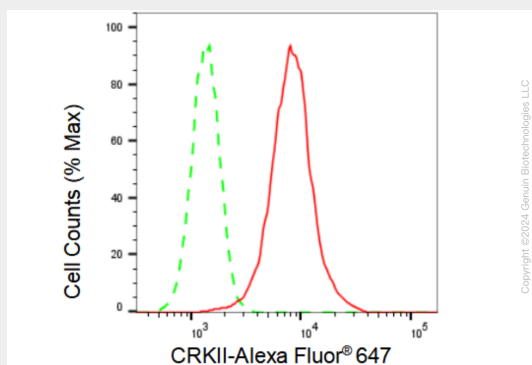
## KD-Validated Anti-CRKII Rabbit Monoclonal Antibody - Images



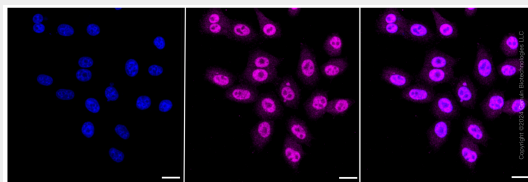
Western blotting analysis using anti-CRKII antibody (Cat#AGI2377). Total cell lysates (30 µg) from various cell lines were loaded and separated by SDS-PAGE. The blot was incubated with anti-CRKII antibody (Cat#AGI2377, 1:5,000) and HRP-conjugated goat anti-rabbit secondary antibody respectively.



Western blotting analysis using anti-CRKII antibody (Cat#AGI2377). CRKII expression in wild type (WT) and CRKII shRNA knockdown (KD) HeLa cells with 30 µg of total cell lysates. β-Tubulin serves as a loading control. The blot was incubated with anti-CRKII antibody (Cat#AGI2377, 1:5,000) and HRP-conjugated goat anti-rabbit secondary antibody respectively.



Flow cytometric analysis of CRKII expression in HepG2 cells using CRKII antibody (Cat#AGI2377, 1:2,000). Green, isotype control; red, CRKII.



Immunocytochemical staining of HepG2 cells with CRKII antibody (Cat#AGI2377, 1:1,000). Nuclei were stained blue with DAPI; CRKII was stained magenta with Alexa Fluor® 647. Images were taken using Leica stellaris 5. Protein abundance based on laser Intensity and smart gain: High. Scale bar: 20  $\mu$ m.