

KD-Validated Anti-RRM1 Rabbit Monoclonal Antibody
Rabbit monoclonal antibody
Catalog # AGI2379**Specification**

KD-Validated Anti-RRM1 Rabbit Monoclonal Antibody - Product Information

Application	WB, FC, ICC
Primary Accession	P23921
Reactivity	Rat, Human, Mouse
Clonality	Monoclonal
Isotype	Rabbit IgG
Calculated MW	Predicted, 90 kDa ; Observed, 75 kDa KDa
Gene Name	RRM1
Aliases	Ribonucleotide Reductase Catalytic Subunit M1; Ribonucleoside-Diphosphate Reductase Large Subunit; Ribonucleoside-Diphosphate Reductase Subunit M1; Ribonucleotide Reductase M1 Polypeptide; EC 1.17.4.1; RR1; Ribonucleotide Reductase Large Subunit; Ribonucleotide Reductase, R1 Subunit; RIR1; R1
Immunogen	A synthesized peptide derived from human beta RRM1

KD-Validated Anti-RRM1 Rabbit Monoclonal Antibody - Additional Information

Gene ID	6240
Other Names	
Ribonucleoside-diphosphate reductase large subunit, 1.17.4.1, Ribonucleoside-diphosphate reductase subunit M1, Ribonucleotide reductase large subunit, RRM1, RR1	

KD-Validated Anti-RRM1 Rabbit Monoclonal Antibody - Protein Information**Name** RRM1**Synonyms** RR1**Function**

Provides the precursors necessary for DNA synthesis. Catalyzes the biosynthesis of deoxyribonucleotides from the corresponding ribonucleotides.

Cellular Location

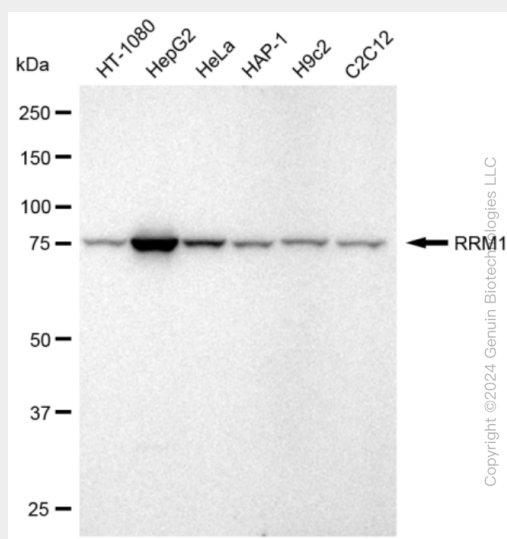
Cytoplasm.

KD-Validated Anti-RRM1 Rabbit Monoclonal Antibody - Protocols

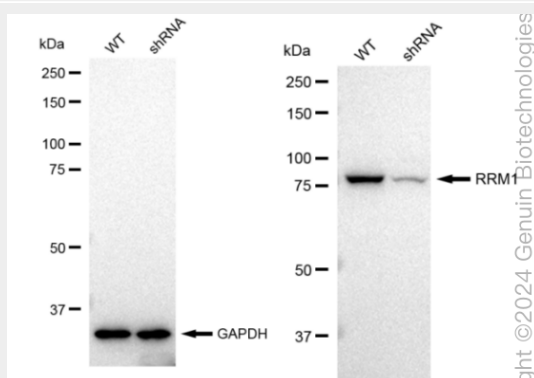
Provided below are standard protocols that you may find useful for product applications.

- [Western Blot](#)
- [Blocking Peptides](#)
- [Dot Blot](#)
- [Immunohistochemistry](#)
- [Immunofluorescence](#)
- [Immunoprecipitation](#)
- [Flow Cytometry](#)
- [Cell Culture](#)

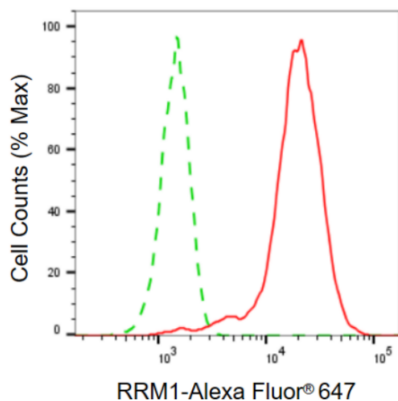
KD-Validated Anti-RRM1 Rabbit Monoclonal Antibody - Images



Western blotting analysis using anti-RRM1 antibody (Cat#AGI2379). Total cell lysates (30 µg) from various cell lines were loaded and separated by SDS-PAGE. The blot was incubated with anti-RRM1 antibody (Cat#AGI2379, 1:5,000) and HRP-conjugated goat anti-rabbit secondary antibody respectively.

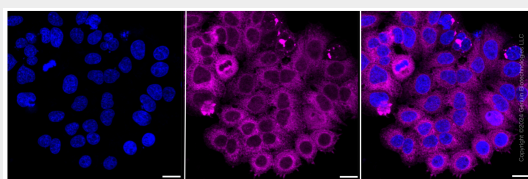


Western blotting analysis using anti-RRM1 antibody (Cat#AGI2379). RRM1 expression in wild type (WT) and RRM1 shRNA knockdown (KD) HeLa cells with 30 µg of total cell lysates. GAPDH serves as a loading control. The blot was incubated with anti-RRM1 antibody (Cat#AGI2379, 1:10,000) and HRP-conjugated goat anti-rabbit secondary antibody respectively.



Copyright ©2024 Genuin Biotechnologies LLC

Flow cytometric analysis of RRM1 expression in HepG2 cells using RRM1 antibody (Cat#AGI2379, 1:2,000). Green, isotype control; red, RRM1.



Immunocytochemical staining of HepG2 cells with RRM1 antibody (Cat#AGI2379, 1:1,000). Nuclei were stained blue with DAPI; RRM1 was stained magenta with Alexa Fluor® 647. Images were taken using Leica stellaris 5. Protein abundance based on laser Intensity and smart gain: High. Scale bar: 20 µm.