

**KD-Validated Anti-Citrate synthetase Rabbit Monoclonal Antibody**  
**Rabbit monoclonal antibody**  
**Catalog # AGI2387****Specification**

---

**KD-Validated Anti-Citrate synthetase Rabbit Monoclonal Antibody - Product Information**

Application	WB, FC, ICC
Primary Accession	<a href="#">O75390</a>
Reactivity	Rat, Human, Mouse
Clonality	Monoclonal
Isotype	Rabbit IgG
Calculated MW	Predicted, 52 kDa ; Observed, 45 kDa kDa
Gene Name	CS
Aliases	CS; Citrate Synthase; Citrate Synthase, Mitochondrial; Citrate (Si)-Synthase; EC 2.3.3.1; EC 2.3.3
Immunogen	A synthesized peptide derived from human CS

**KD-Validated Anti-Citrate synthetase Rabbit Monoclonal Antibody - Additional Information**

Gene ID	1431
<b>Other Names</b>	
Citrate synthase, mitochondrial, 2.3.3.1, Citrate (Si)-synthase, CS	

**KD-Validated Anti-Citrate synthetase Rabbit Monoclonal Antibody - Protein Information****Name** CS**Function**

Key enzyme of the Krebs tricarboxylic acid cycle which catalyzes the synthesis of citrate from acetyl coenzyme A and oxaloacetate.

**Cellular Location**

Mitochondrion matrix {ECO:0000250|UniProtKB:P00889}

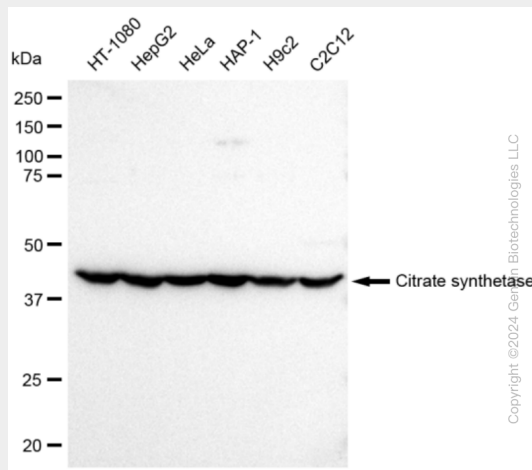
**KD-Validated Anti-Citrate synthetase Rabbit Monoclonal Antibody - Protocols**

Provided below are standard protocols that you may find useful for product applications.

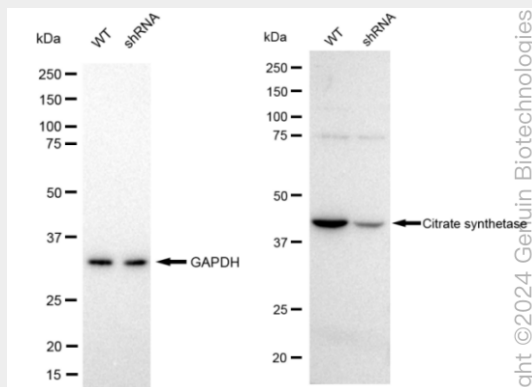
- [Western Blot](#)
- [Blocking Peptides](#)
- [Dot Blot](#)
- [Immunohistochemistry](#)
- [Immunofluorescence](#)

- [Immunoprecipitation](#)
- [Flow Cytometry](#)
- [Cell Culture](#)

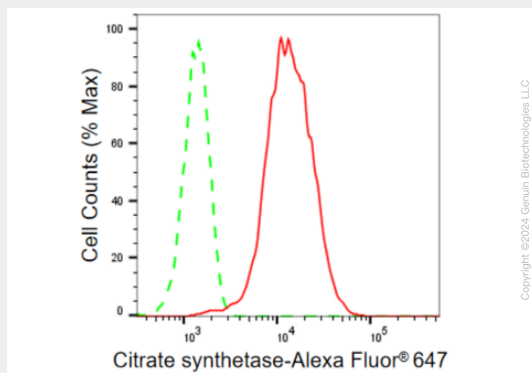
## KD-Validated Anti-Citrate synthetase Rabbit Monoclonal Antibody - Images



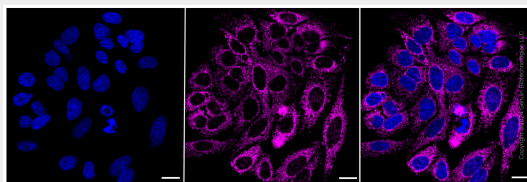
Western blotting analysis using anti-Citrate synthetase antibody (Cat#AGI2387). Total cell lysates (30 µg) from various cell lines were loaded and separated by SDS-PAGE. The blot was incubated with anti-Citrate synthetase antibody (Cat#AGI2387, 1:5,000) and HRP-conjugated goat anti-rabbit secondary antibody respectively.



Western blotting analysis using anti-Citrate synthetase antibody (Cat#AGI2387). Citrate synthetase expression in wild type (WT) and Citrate synthetase shRNA knockdown (KD) HeLa cells with 30 µg of total cell lysates. GAPDH serves as a loading control. The blot was incubated with anti-Citrate synthetase antibody (Cat#AGI2387, 1:5,000) and HRP-conjugated goat anti-rabbit secondary antibody respectively.



Flow cytometric analysis of Citrate synthetase expression in HepG2 cells using Citrate synthetase antibody (Cat#AGI2387, 1:2,000). Green, isotype control; red, Citrate synthetase.



Immunocytochemical staining of HepG2 cells with Citrate synthetase antibody (Cat#AGI2387, 1:1,000). Nuclei were stained blue with DAPI; Citrate synthetase was stained magenta with Alexa Fluor® 647. Images were taken using Leica stellaris 5. Protein abundance based on laser Intensity and smart gain: High. Scale bar: 20 µm.