

KD-Validated Anti-STAT6 Rabbit Monoclonal Antibody
Rabbit monoclonal antibody
Catalog # AGI2390**Specification**

KD-Validated Anti-STAT6 Rabbit Monoclonal Antibody - Product Information

Application	WB, FC, ICC
Primary Accession	P42226
Reactivity	Human
Clonality	Monoclonal
Isotype	Rabbit IgG
Calculated MW	Predicted, 94 kDa, observed, 94 kDa
Gene Name	STAT6
Aliases	STAT6; Signal Transducer And Activator Of Transcription 6; IL-4-STAT; D12S1644; Signal Transducer And Activator Of Transcription 6, Interleukin-4 Induced; Transcription Factor IL-4 STAT; STAT, Interleukin4-Induced; EC 2.4.1.227; EC 2.7.7.6; IL-4 Stat; STAT6B; STAT6C
Immunogen	A synthesized peptide derived from human STAT6

KD-Validated Anti-STAT6 Rabbit Monoclonal Antibody - Additional Information

Gene ID	6778
Other Names	
Signal transducer and activator of transcription 6, IL-4 Stat, STAT6	

KD-Validated Anti-STAT6 Rabbit Monoclonal Antibody - Protein Information**Name** STAT6**Function**

Carries out a dual function: signal transduction and activation of transcription. Involved in IL4/interleukin-4- and IL3/interleukin-3-mediated signaling.

Cellular Location

Cytoplasm. Nucleus. Note=Translocated into the nucleus in response to phosphorylation

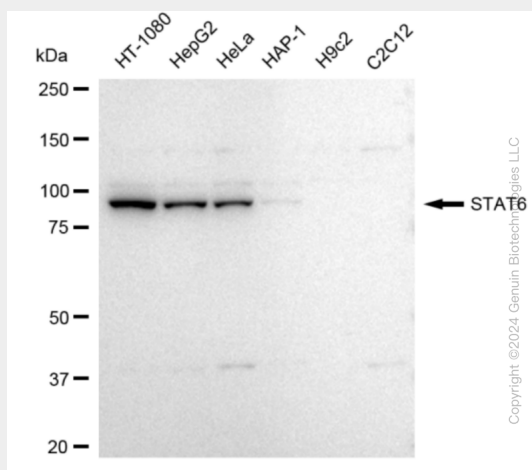
KD-Validated Anti-STAT6 Rabbit Monoclonal Antibody - Protocols

Provided below are standard protocols that you may find useful for product applications.

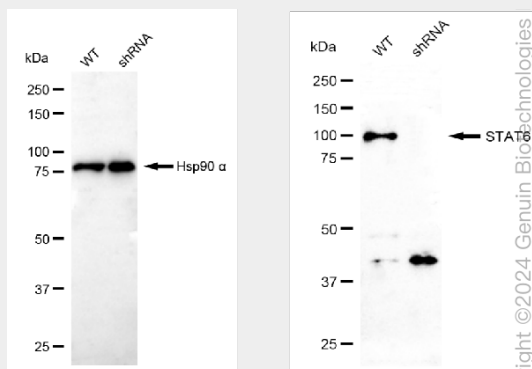
- [Western Blot](#)
- [Blocking Peptides](#)

- [Dot Blot](#)
- [Immunohistochemistry](#)
- [Immunofluorescence](#)
- [Immunoprecipitation](#)
- [Flow Cytometry](#)
- [Cell Culture](#)

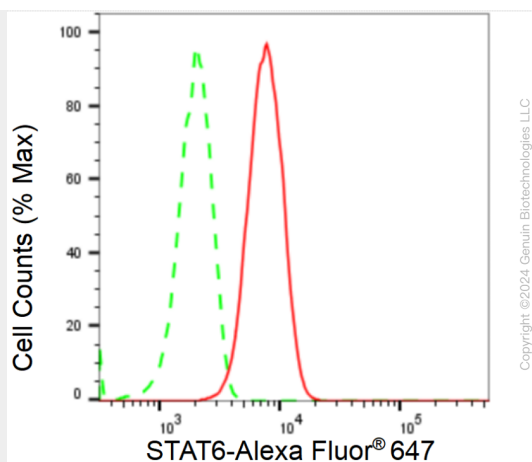
KD-Validated Anti-STAT6 Rabbit Monoclonal Antibody - Images



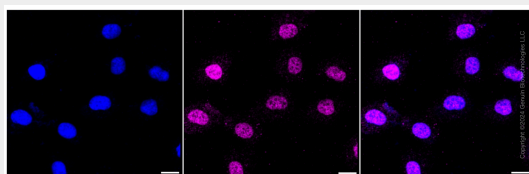
Western blotting analysis using anti-STAT6 antibody (Cat#AGI2390). Total cell lysates (30 µg) from various cell lines were loaded and separated by SDS-PAGE. The blot was incubated with anti-STAT6 antibody (Cat#AGI2390, 1:5,000) and HRP-conjugated goat anti-rabbit secondary antibody respectively.



Western blotting analysis using anti-STAT6 antibody (Cat#AGI2390). STAT6 expression in wild-type (WT) and STAT6 shRNA knockdown (KD) HeLa cells with 20 µg of total cell lysates. β-Tubulin serves as a loading control. The blot was incubated with anti-STAT6 antibody (Cat#AGI2390, 1:5,000) and HRP-conjugated goat anti-rabbit secondary antibody respectively.



Flow cytometric analysis of STAT6 expression in HT-1080 cells using STAT6 antibody (Cat#AGI2390, 1:2,000). Green, isotype control; red, STAT6.



Immunocytochemical staining of HT-1080 cells with STAT6 antibody (Cat#AGI2390, 1:1,000). Nuclei were stained blue with DAPI; STAT6 was stained magenta with Alexa Fluor® 647. Images were taken using Leica stellaris 5. Protein abundance based on laser Intensity and smart gain: Medium. Scale bar: 20 μ m.