

**KD-Validated Anti-NUMB Rabbit Monoclonal Antibody**  
**Rabbit monoclonal antibody**  
**Catalog # AGI2396****Specification****KD-Validated Anti-NUMB Rabbit Monoclonal Antibody - Product Information**

Application	WB, FC, ICC
Primary Accession	<a href="#">P49757</a>
Reactivity	Rat, Human, Mouse
Clonality	Monoclonal
Isotype	Rabbit IgG
Calculated MW	Predicted, 71 kDa ; Observed, 71 kDa KDa
Gene Name	NUMB
Aliases	NUMB Endocytic Adaptor Protein; C14orf41; Protein Numb Homolog; H-Numb; Chromosome 14 Open Reading Frame 41; Numb (Drosophila) Homolog; Numb Homolog (Drosophila); Numb Homolog; Protein S171; C14_5527; S171
Immunogen	A synthesized peptide derived from human NUMB

**KD-Validated Anti-NUMB Rabbit Monoclonal Antibody - Additional Information**

Gene ID	8650
<b>Other Names</b>	
Protein numb homolog, h-Numb, Protein S171, NUMB ( <a href="http://www.genenames.org/cgi-bin/gene_symbol_report?hgnc_id=8060" target="_blank">http://www.genenames.org/cgi-bin/gene_symbol_report?hgnc_id=8060</a> target="_blank">HGNC:8060</a>)	

**KD-Validated Anti-NUMB Rabbit Monoclonal Antibody - Protein Information****Name** NUMB ([HGNC:8060](#))**Function**

Regulates clathrin-mediated receptor endocytosis (PubMed:[18657069](http://www.uniprot.org/citations/18657069)). Plays a role in the process of neurogenesis (By similarity). Required throughout embryonic neurogenesis to maintain neural progenitor cells, also called radial glial cells (RGCs), by allowing their daughter cells to choose progenitor over neuronal cell fate (By similarity). Not required for the proliferation of neural progenitor cells before the onset of neurogenesis. Also involved postnatally in the subventricular zone (SVZ) neurogenesis by regulating SVZ neuroblasts survival and ependymal wall integrity (By similarity). May also mediate local repair of brain ventricular wall damage (By similarity).

**Cellular Location**

Cell membrane; Peripheral membrane protein; Cytoplasmic side. Endosome membrane; Peripheral membrane protein; Cytoplasmic side. Note=Localizes to perinuclear endosomes in an

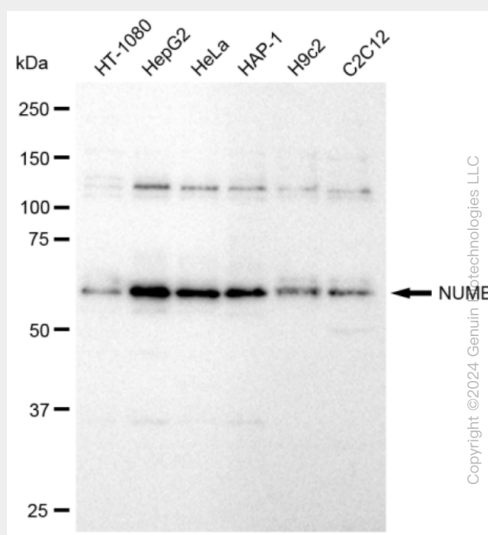
AAK1-dependent manner.

## KD-Validated Anti-NUMB Rabbit Monoclonal Antibody - Protocols

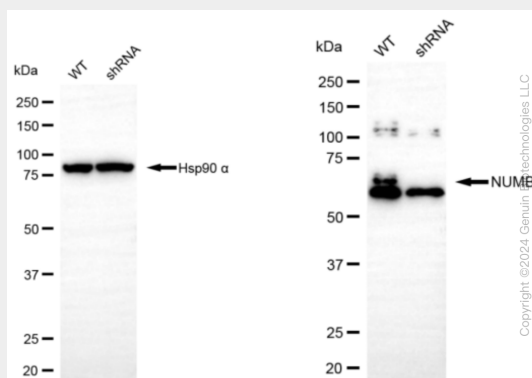
Provided below are standard protocols that you may find useful for product applications.

- [Western Blot](#)
- [Blocking Peptides](#)
- [Dot Blot](#)
- [Immunohistochemistry](#)
- [Immunofluorescence](#)
- [Immunoprecipitation](#)
- [Flow Cytometry](#)
- [Cell Culture](#)

## KD-Validated Anti-NUMB Rabbit Monoclonal Antibody - Images

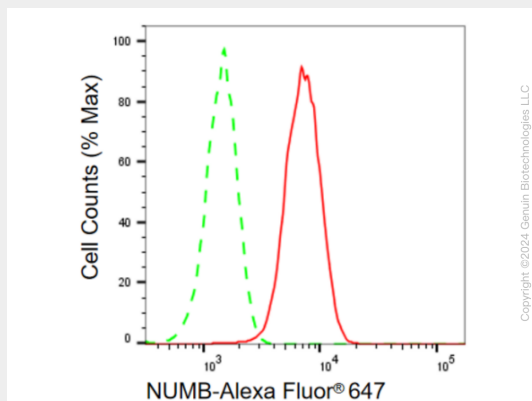


Western blotting analysis using anti-NUMB antibody (Cat#AGI2396). Total cell lysates (30 µg) from various cell lines were loaded and separated by SDS-PAGE. The blot was incubated with anti-NUMB antibody (Cat#AGI2396, 1:5,000) and HRP-conjugated goat anti-rabbit secondary antibody respectively.

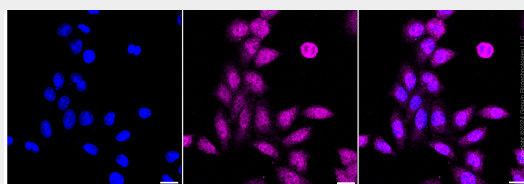


Western blotting analysis using anti-NUMB antibody (Cat#AGI2396). NUMB expression in wild type (WT) and NUMB shRNA knockdown (KD) HT-1080 cells with 30 µg of total cell lysates. GAPDH

serves as a loading control. The blot was incubated with anti-NUMB antibody (Cat#AGI2396, 1:5,000) and HRP-conjugated goat anti-rabbit secondary antibody respectively.



Flow cytometric analysis of NUMB expression in HepG2 cells using NUMB antibody (Cat#AGI2396, 1:2,000). Green, isotype control; red, NUMB.



Immunocytochemical staining of HepG2 cells with anti-NUMB antibody (Cat#AGI2396, 1:1,000). Nuclei were stained blue with DAPI; NUMB was stained magenta with Alexa Fluor® 647. Images were taken using Leica stellaris 5. Protein abundance based on laser Intensity and smart gain: Meduim. Scale bar: 20 µm.