

KO-Validated Anti-FERMT2 Mouse Monoclonal Antibody
Mouse monoclonal antibody
Catalog # AGI2401**Specification****KO-Validated Anti-FERMT2 Mouse Monoclonal Antibody - Product Information**

Application	WB, FC, ICC
Primary Accession	Q96AC1
Reactivity	Rat, Human, Mouse
Clonality	Monoclonal
Isotype	Mouse IgG2a
Calculated MW	Predicted, 78 kDa, observed, 73 kDa kDa
Gene Name	FERMT2
Aliases	FERMT2; FERM Domain Containing Kindlin 2; KIND2; UNC112B; PLEKHC1; Mig-2; Pleckstrin Homology Domain Containing, Family C (With FERM Domain) Member 1; PH Domain-Containing Family C Member 1; Fermitin Family Homolog 2; Mitogen Inducible Gene-2; Fermitin Family Member 2; Kindlin-2; MIG2; Pleckstrin Homology Domain Containing, Family C Member 1; Pleckstrin Homology Domain-Containing Family C Member 1; Fermitin Family Homolog 2 (Drosophila); Mitogen Inducible Gene 2 Protein; Mitogen-Inducible Gene 2 Protein; Kindlin 2; UNC112; MIG-2
Immunogen	Recombinant protein of human FERMT2

KO-Validated Anti-FERMT2 Mouse Monoclonal Antibody - Additional InformationGene ID **10979****Other Names**

Fermitin family homolog 2, Kindlin-2, Mitogen-inducible gene 2 protein, MIG-2, Pleckstrin homology domain-containing family C member 1, PH domain-containing family C member 1, FERMT2, KIND2, MIG2, PLEKHC1

KO-Validated Anti-FERMT2 Mouse Monoclonal Antibody - Protein Information**Name** FERMT2**Synonyms** KIND2, MIG2, PLEKHC1**Function**

Scaffolding protein that enhances integrin activation mediated by TLN1 and/or TLN2, but activates integrins only weakly by itself. Binds to membranes enriched in phosphoinositides. Enhances integrin-mediated cell adhesion onto the extracellular matrix and cell spreading; this requires both its ability to interact with integrins and with phospholipid membranes. Required for the assembly

of focal adhesions. Participates in the connection between extracellular matrix adhesion sites and the actin cytoskeleton and also in the orchestration of actin assembly and cell shape modulation. Recruits FBLIM1 to focal adhesions. Plays a role in the TGFB1 and integrin signaling pathways. Stabilizes active CTNNB1 and plays a role in the regulation of transcription mediated by CTNNB1 and TCF7L2/TCF4 and in Wnt signaling.

Cellular Location

Cytoplasm. Cytoplasm, cell cortex. Cytoplasm, cytoskeleton. Cytoplasm, cytoskeleton, stress fiber. Cell junction, focal adhesion. Membrane; Peripheral membrane protein; Cytoplasmic side. Cell projection, lamellipodium membrane; Peripheral membrane protein; Cytoplasmic side. Nucleus. Cytoplasm, myofibril, sarcomere, I band. Cell surface. Note=Colocalizes with actin stress fibers at cell-ECM focal adhesion sites. Colocalizes with ITGB3 at lamellipodia at the leading edge of spreading cells. Binds to membranes that contain phosphatidylinositides

Tissue Location

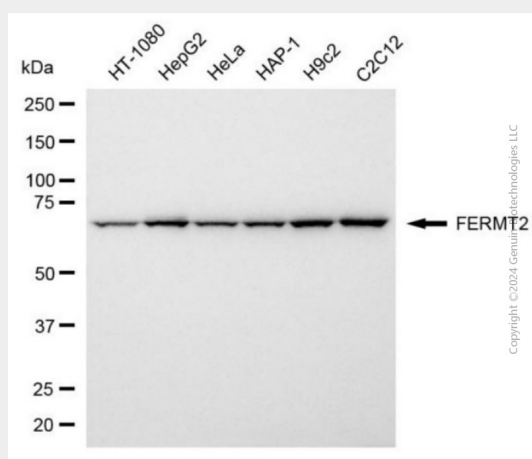
Ubiquitous. Found in numerous tumor tissues.

KO-Validated Anti-FERMT2 Mouse Monoclonal Antibody - Protocols

Provided below are standard protocols that you may find useful for product applications.

- [Western Blot](#)
- [Blocking Peptides](#)
- [Dot Blot](#)
- [Immunohistochemistry](#)
- [Immunofluorescence](#)
- [Immunoprecipitation](#)
- [Flow Cytometry](#)
- [Cell Culture](#)

KO-Validated Anti-FERMT2 Mouse Monoclonal Antibody - Images



Western blotting analysis using anti-FERMT2 antibody (Cat#AGI2401). Total cell lysates (30 µg) from various cell lines were loaded and separated by SDS-PAGE. The blot was incubated with anti-FERMT2 antibody (Cat#AGI2401, 1:5,000) and HRP-conjugated goat anti-mouse secondary antibody respectively.

