

KO Validated Anti-BCL2 Like 11 Rabbit Monoclonal Antibody
Rabbit monoclonal antibody
Catalog # AGI2411**Specification****KO Validated Anti-BCL2 Like 11 Rabbit Monoclonal Antibody - Product Information**

Application	WB, FC
Primary Accession	O43521
Reactivity	Rat, Human, Mouse
Clonality	Monoclonal
Isotype	Rabbit IgG
Calculated MW	Predicted, 22 kDa, observed, 22 kDa kDa
Gene Name	BCL2L11
Aliases	BCL2L11; BCL2 Like 11; BIM; BOD; BCL2-Like 11 (Apoptosis Facilitator); Bcl-2-Like Protein 11; BimEL; BimL; BimS; Bcl-2 Interacting Mediator Of Cell Death; Bcl2-Interacting Mediator Of Cell Death; Bcl-2-Related Ovarian Death Agonist; Bcl-2 Interacting Protein Bim; Bcl2-L-11; BAM A synthesized peptide derived from human Bim
Immunogen	

KO Validated Anti-BCL2 Like 11 Rabbit Monoclonal Antibody - Additional Information

Gene ID	10018
Other Names	
Bcl-2-like protein 11, Bcl2-L-11, Bcl2-interacting mediator of cell death, BCL2L11, BIM	

KO Validated Anti-BCL2 Like 11 Rabbit Monoclonal Antibody - Protein Information**Name** BCL2L11**Synonyms** BIM**Function**

Induces apoptosis and anoikis. Isoform BimL is more potent than isoform BimEL. Isoform Bim-alpha1, isoform Bim-alpha2 and isoform Bim-alpha3 induce apoptosis, although less potent than isoform BimEL, isoform BimL and isoform BimS. Isoform Bim-gamma induces apoptosis. Isoform Bim-alpha3 induces apoptosis possibly through a caspase- mediated pathway. Isoform BimAC and isoform BimABC lack the ability to induce apoptosis.

Cellular Location

Endomembrane system; Peripheral membrane protein. Note=Associated with intracytoplasmic membranes. [Isoform BimL]: Mitochondrion. [Isoform Bim-alpha1]: Mitochondrion.

Tissue Location

Isoform BimEL, isoform BimL and isoform BimS are the predominant isoforms and are widely

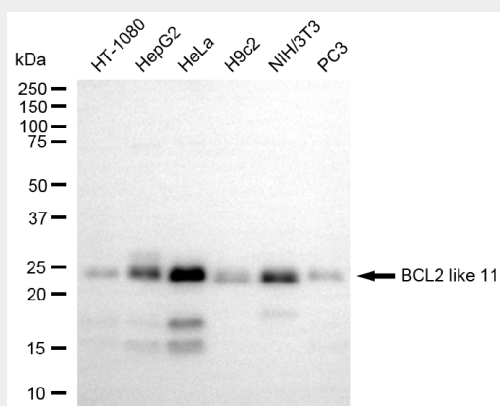
expressed with tissue-specific variation. Isoform Bim-gamma is most abundantly expressed in small intestine and colon, and in lower levels in spleen, prostate, testis, heart, liver and kidney.

KO Validated Anti-BCL2 Like 11 Rabbit Monoclonal Antibody - Protocols

Provided below are standard protocols that you may find useful for product applications.

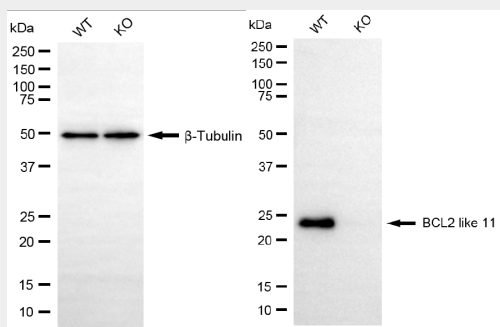
- [Western Blot](#)
- [Blocking Peptides](#)
- [Dot Blot](#)
- [Immunohistochemistry](#)
- [Immunofluorescence](#)
- [Immunoprecipitation](#)
- [Flow Cytometry](#)
- [Cell Culture](#)

KO Validated Anti-BCL2 Like 11 Rabbit Monoclonal Antibody - Images



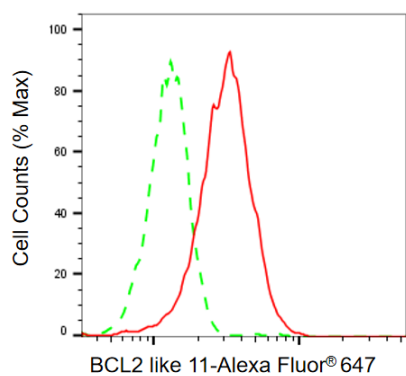
Copyright ©2025 Genulin Biotechnologies LLC

Western blotting analysis using anti-BCL2 like 11 antibody (Cat#AGI2411). Total cell lysates (30 µg) from various cell lines were loaded and separated by SDS-PAGE. The blot was incubated with anti-BCL2 like 11 antibody (Cat#AGI2411, 1:5,000) and HRP-conjugated goat anti-rabbit secondary antibody respectively.



Copyright ©2025 Genulin Biotechnologies LLC

Western blotting analysis using anti-BCL2 like 11 antibody (Cat#AGI2411). BCL2 like 11 expression in wild type (WT) and BCL2 like 11 (BCL2L11) knockout (KO) HSHC cells with 20 µg of total cell lysates. β-Tubulin serves as a loading control. The blot was incubated with anti-BCL2 like 11 antibody (Cat#AGI2411, 1:5,000) and HRP-conjugated goat anti-rabbit secondary antibody respectively.



Flow cytometric analysis of BCL2 like 11 expression in HepG2 cells using anti-BCL2 like 11 antibody (Cat# AGI2411, 1:2,000). Green, isotype control; red, BCL2 like 11.