

KO Validated Anti-CREB1 Mouse Monoclonal Antibody
Mouse monoclonal antibody
Catalog # AGI2413**Specification****KO Validated Anti-CREB1 Mouse Monoclonal Antibody - Product Information**

Application	WB
Primary Accession	P16220
Reactivity	Rat, Human, Mouse
Clonality	Monoclonal
Isotype	Mouse IgG1 kappa
Calculated MW	Predicted, 35 kDa, observed, 43 kDa
Gene Name	KDa CREB1
Aliases	CREB1; CAMP Responsive Element Binding Protein 1; Cyclic AMP-Responsive Element-Binding Protein 1; CREB-1; Cyclic Adenosine 3',5'-Monophosphate Response Element-Binding Protein CREB; Cyclic Adenosine 3',5'-Monophosphate Response Element Binding Protein; CAMP-Responsive Element-Binding Protein 1; CAMP-Response Element-Binding Protein-1; Active Transcription Factor CREB; Transactivator Protein; CREB Recombinant protein of human CREB
Immunogen	

KO Validated Anti-CREB1 Mouse Monoclonal Antibody - Additional Information

Gene ID	1385
Other Names	
Cyclic AMP-responsive element-binding protein 1, CREB-1, cAMP-responsive element-binding protein 1, CREB1	

KO Validated Anti-CREB1 Mouse Monoclonal Antibody - Protein Information**Name** CREB1**Function**

Phosphorylation-dependent transcription factor that stimulates transcription upon binding to the DNA cAMP response element (CRE), a sequence present in many viral and cellular promoters (By similarity). Transcription activation is enhanced by the TORC coactivators which act independently of Ser-119 phosphorylation (PubMed: <http://www.uniprot.org/citations/14536081> target="_blank">14536081). Involved in different cellular processes including the synchronization of circadian rhythmicity and the differentiation of adipose cells (By similarity). Regulates the expression of apoptotic and inflammatory response factors in cardiomyocytes in response to ERFE-mediated activation of AKT signaling (By similarity).

Cellular Location

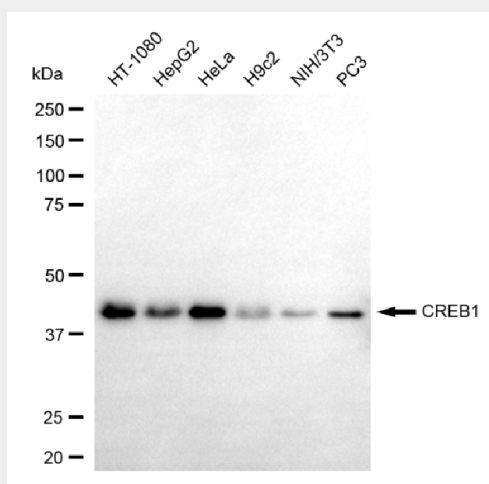
Nucleus {ECO:0000255|PROSITE-ProRule:PRU00312, ECO:0000255|PROSITE-ProRule:PRU00978, ECO:0000269|PubMed:12552083}

KO Validated Anti-CREB1 Mouse Monoclonal Antibody - Protocols

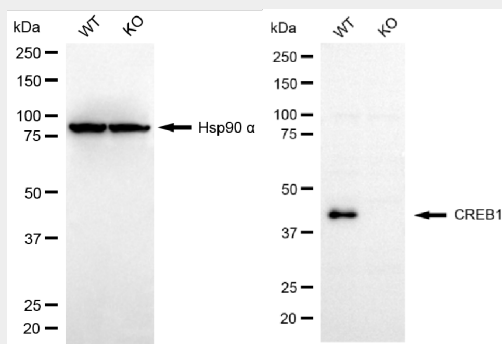
Provided below are standard protocols that you may find useful for product applications.

- [Western Blot](#)
- [Blocking Peptides](#)
- [Dot Blot](#)
- [Immunohistochemistry](#)
- [Immunofluorescence](#)
- [Immunoprecipitation](#)
- [Flow Cytometry](#)
- [Cell Culture](#)

KO Validated Anti-CREB1 Mouse Monoclonal Antibody - Images



Western blotting analysis using anti-CREB1 antibody (Cat#AGI2413). Total cell lysates (30 µg) from various cell lines were loaded and separated by SDS-PAGE. The blot was incubated with anti-CREB1 antibody (Cat#AGI2413, 1:5,000) and HRP-conjugated goat anti-mouse secondary antibody respectively.



Western blotting analysis using anti-CREB1 antibody (Cat#AGI2413). CREB1 expression in wild type (WT) and CREB1 knockout (KO) 293T cells with 20 µg of total cell lysates. Hsp90 α serves as a loading control. The blot was incubated with anti-CREB1 antibody (Cat#AGI2413, 1:5,000) and HRP-conjugated goat anti-rabbit secondary antibody respectively.