

KO-Validated Anti-ETS Transcription Factor ELK1 Rabbit Monoclonal Antibody
Rabbit monoclonal antibody
Catalog # AGI2428**Specification****KO-Validated Anti-ETS Transcription Factor ELK1 Rabbit Monoclonal Antibody - Product Information**

Application	WB, FC, ICC
Primary Accession	P19419
Reactivity	Rat, Human, Mouse
Clonality	Monoclonal
Isotype	Rabbit IgG
Calculated MW	Predicted, 45 kDa; observed, 62 kDa kDa
Gene Name	ELK1
Aliases	ELK1; ETS Transcription Factor ELK1; ELK1, Member Of ETS Oncogene Family; ETS Domain-Containing Protein Elk-1; Tyrosine Kinase (ELK1) Oncogene; ELK1, ETS Transcription Factor; ETS-Like Gene 1
Immunogen	A synthesized peptide derived from human ELK1

KO-Validated Anti-ETS Transcription Factor ELK1 Rabbit Monoclonal Antibody - Additional Information

Gene ID	2002
Other Names	
ETS domain-containing protein Elk-1, ELK1 (http://www.genenames.org/cgi-bin/gene_symbol_report?hgnc_id=3321)	
target="_blank">HGNC:3321)	

KO-Validated Anti-ETS Transcription Factor ELK1 Rabbit Monoclonal Antibody - Protein Information**Name** ELK1 ([HGNC:3321](#))**Function**

Transcription factor that binds to purine-rich DNA sequences (PubMed:[10799319](http://www.uniprot.org/citations/10799319), PubMed:[7889942](http://www.uniprot.org/citations/7889942)). Forms a ternary complex with SRF and the ETS and SRF motifs of the serum response element (SRE) on the promoter region of immediate early genes such as FOS and IER2 (PubMed:[1630903](http://www.uniprot.org/citations/1630903)). Induces target gene transcription upon JNK and MAPK- signaling pathways stimulation (PubMed:[7889942](http://www.uniprot.org/citations/7889942)).

Cellular Location

Nucleus.

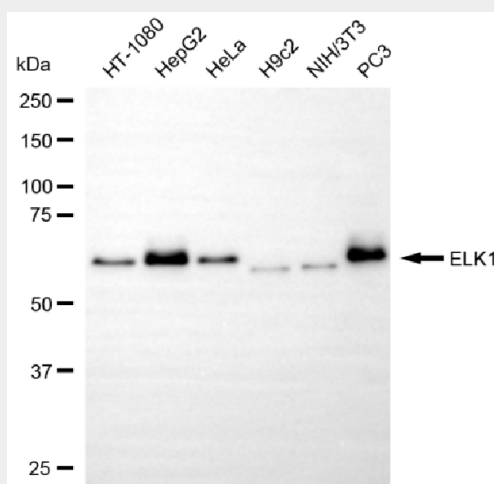
Tissue Location
Lung and testis.

KO-Validated Anti-ETS Transcription Factor ELK1 Rabbit Monoclonal Antibody - Protocols

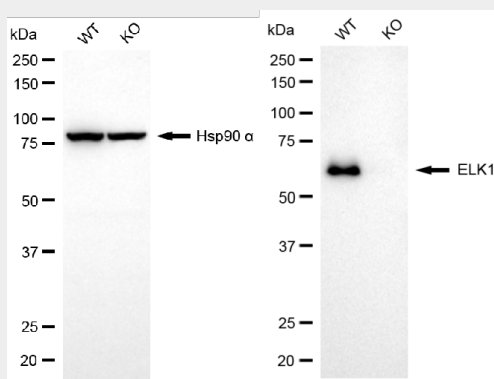
Provided below are standard protocols that you may find useful for product applications.

- [Western Blot](#)
- [Blocking Peptides](#)
- [Dot Blot](#)
- [Immunohistochemistry](#)
- [Immunofluorescence](#)
- [Immunoprecipitation](#)
- [Flow Cytometry](#)
- [Cell Culture](#)

KO-Validated Anti-ETS Transcription Factor ELK1 Rabbit Monoclonal Antibody - Images

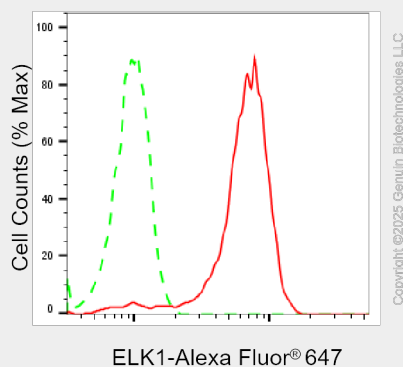


Western blotting analysis using anti-ELK1 antibody (Cat#AGI2428). Total cell lysates (30 µg) from various cell lines were loaded and separated by SDS-PAGE. The blot was incubated with anti-ELK1 antibody (Cat#AGI2428, 1:5,000) and HRP-conjugated goat anti-rabbit secondary antibody respectively.

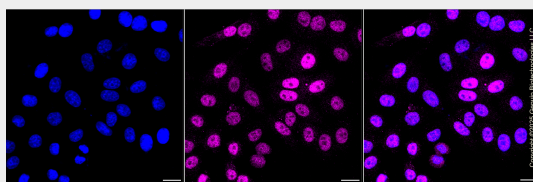


Western blotting analysis using anti-ELK1 antibody (Cat#AGI2428). ELK1 expression in wild type (WT) and ELK1 knockout (KO) HSHC cells with 20 µg of total cell lysates. Hsp90 α serves as a loading control. The blot was incubated with anti-ELK1 antibody (Cat#AGI2428, 1:5,000) and

HRP-conjugated goat anti-rabbit secondary antibody respectively.



Flow cytometric analysis of ELK1 expression in HepG2 cells using anti-ELK1 antibody (Cat#AGI2428, 1:2,000). Green, isotype control; red, ELK1.



Immunocytochemical staining of HepG2 cells with anti-ELK1 antibody (Cat#AGI2428, 1:1,000). Nuclei were stained blue with DAPI; ELK1 was stained magenta with Alexa Fluor® 647. Images were taken using Leica stellaris 5. Protein abundance based on laser Intensity and smart gain: Medium. Scale bar, 20 µm.