

**CD34 Antibody [Clone ICO-115]**  
**Purified Mouse Monoclonal Antibody**  
**Catalog # AH10218****Specification**

---

**CD34 Antibody [Clone ICO-115] - Product Information**

|                   |                        |
|-------------------|------------------------|
| Application       | FC                     |
| Primary Accession | <a href="#">P28906</a> |
| Reactivity        | Human, Rat             |
| Host              | Mouse                  |
| Clonality         | Monoclonal             |
| Isotype           | IgG1, kappa            |
| Calculated MW     | 90-110kDa KDa          |

**CD34 Antibody [Clone ICO-115] - Additional Information****Gene ID** 947**Other Names**

Hematopoietic progenitor cell antigen CD34, CD34, CD34

**Target/Specificity**

Blast cells of a chronic myeloid leukemia patient

**Application Note**

&lt;span class = "dilution\_FC"&gt;FC~~1:10~50&lt;/span&gt;

**Format**

0.5 ml at 100ug/ml; Conjugated to AF647

**Storage**

Store at 2 to 8°C. Antibody is stable for 24 months.

**Precautions**

CD34 Antibody [Clone ICO-115] is for research use only and not for use in diagnostic or therapeutic procedures.

**CD34 Antibody [Clone ICO-115] - Protein Information****Name** CD34**Function**

Possible adhesion molecule with a role in early hematopoiesis by mediating the attachment of stem cells to the bone marrow extracellular matrix or directly to stromal cells. Could act as a scaffold for the attachment of lineage specific glycans, allowing stem cells to bind to lectins expressed by stromal cells or other marrow components. Presents carbohydrate ligands to selectins.

**Cellular Location**

Membrane; Single-pass type I membrane protein.

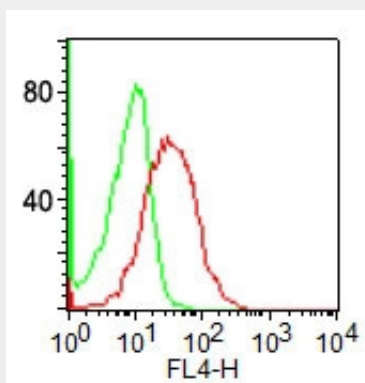
**Tissue Location**

Selectively expressed on hematopoietic progenitor cells and the small vessel endothelium of a variety of tissues

**CD34 Antibody [Clone ICO-115] - Protocols**

Provided below are standard protocols that you may find useful for product applications.

- [Western Blot](#)
- [Blocking Peptides](#)
- [Dot Blot](#)
- [Immunohistochemistry](#)
- [Immunofluorescence](#)
- [Immunoprecipitation](#)
- [Flow Cytometry](#)
- [Cell Culture](#)

**CD34 Antibody [Clone ICO-115] - Images**

Surface flow cytometric analysis of CD34 on KG-1 cells using CD34 Ab (ICO-115) (red) and isotype control Ab (green). PPI negative cell population was gated for analysis.

**CD34 Antibody [Clone ICO-115] - Background**

This antibody recognizes a single chain, transmembrane, heavily glycosylated protein of 90-120kDa, which is identified as CD34. Its expression is a hallmark for identifying pluripotent hematopoietic stem or progenitor cells. Its expression is gradually lost as lineage committed progenitors differentiate. CD34 is a marker of choice for staining blasts in acute myeloid leukemia. In addition, it is expressed by soft tissue tumors, such as solitary fibrous tumor and gastrointestinal stromal tumor. CD34 expression is also found in vascular endothelium. Additionally, it appears that proliferating endothelial cells overexpress this molecule than the non-proliferating endothelial cells. Anti-CD34 labels > 85% of angiosarcoma and Kaposi's sarcoma, but shows low specificity.

**CD34 Antibody [Clone ICO-115] - References**

1. Felshow DM et al. Blood 97:3768-3775 (2001).
2. Sato T et al. Blood 94:2548-2554 (1999).