

HCG-alpha (Pregnancy & Choriocarcinoma Marker) Antibody - With BSA and Azide
Mouse Monoclonal Antibody [Clone SPM552]
Catalog # AH10391**Specification****HCG-alpha (Pregnancy & Choriocarcinoma Marker) Antibody - With BSA and Azide -**
Product Information

Application	IHC-P
Primary Accession	P01215
Other Accession	1081 , 119689
Reactivity	Human
Host	Mouse
Clonality	Monoclonal
Isotype	Mouse / IgG1, kappa
Calculated MW	~13kDa KDa

HCG-alpha (Pregnancy & Choriocarcinoma Marker) Antibody - With BSA and Azide -
Additional Information**Gene ID** 1081**Other Names**

Glycoprotein hormones alpha chain, Anterior pituitary glycoprotein hormones common subunit alpha, Choriogonadotropin alpha chain, Chorionic gonadotrophin subunit alpha, CG-alpha, Follicle-stimulating hormone alpha chain, FSH-alpha, Follicitropin alpha chain, Luteinizing hormone alpha chain, LSH-alpha, Lutropin alpha chain, Thyroid-stimulating hormone alpha chain, TSH-alpha, Thyrotropin alpha chain, CGA

Application Note

IHC-P~~N/A

Format

200ug/ml of Ab purified from Bioreactor Concentrate by Protein A/G. Prepared in 10mM PBS with 0.05% BSA & 0.05% azide. Also available WITHOUT BSA & azide at 1.0mg/ml.

Storage

Store at 2 to 8°C. Antibody is stable for 24 months.

Precautions

HCG-alpha (Pregnancy & Choriocarcinoma Marker) Antibody - With BSA and Azide is for research use only and not for use in diagnostic or therapeutic procedures.

HCG-alpha (Pregnancy & Choriocarcinoma Marker) Antibody - With BSA and Azide -
Protein Information**Name** CGA**Function**

Shared alpha chain of the active heterodimeric glycoprotein hormones thyrotropin/thyroid stimulating hormone/TSH, lutropin/luteinizing hormone/LH, follitropin/follicle stimulating hormone/FSH and choriogonadotropin/CG. These hormones bind specific receptors on target cells that in turn activate downstream signaling pathways.

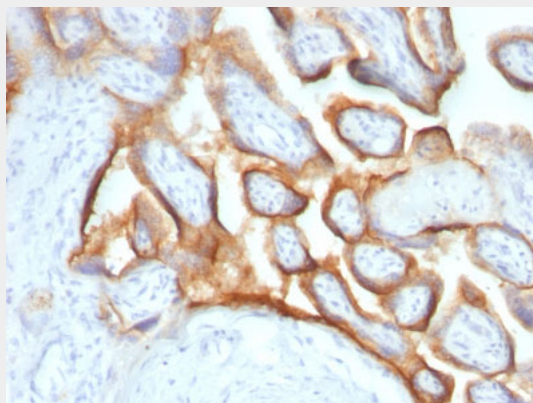
Cellular Location

Secreted

HCG-alpha (Pregnancy & Choriocarcinoma Marker) Antibody - With BSA and Azide - Protocols

Provided below are standard protocols that you may find useful for product applications.

- [Western Blot](#)
- [Blocking Peptides](#)
- [Dot Blot](#)
- [Immunohistochemistry](#)
- [Immunofluorescence](#)
- [Immunoprecipitation](#)
- [Flow Cytometry](#)
- [Cell Culture](#)

HCG-alpha (Pregnancy & Choriocarcinoma Marker) Antibody - With BSA and Azide - Images

Formalin-fixed, paraffin-embedded human Placenta stained with hCG alpha Monoclonal Antibody (SPM552).

HCG-alpha (Pregnancy & Choriocarcinoma Marker) Antibody - With BSA and Azide - Background

This MAb reacts with a protein of ~13kDa, identified as α sub-unit of HCG. HCG is a glycoprotein, which is secreted in large quantities by normal trophoblasts. It is present only in trace amounts in non-pregnant urine and sera but rises sharply during pregnancy. HCG is composed of two non-identical, non-covalently linked polypeptide chains designated as the α and β subunits. The α subunit is identical to that of thyroid stimulating hormone (TSH), follicle stimulating hormone (FSH), and luteinizing hormone (LH).

HCG-alpha (Pregnancy & Choriocarcinoma Marker) Antibody - With BSA and Azide - References

McDonald EA et. al. Endocrinology 150:4358-65 (2009).