

Chromogranin A / CHGA (Neuroendocrine Marker) Antibody - With BSA and Azide
Mouse Monoclonal Antibody [Clone SPM553]
Catalog # AH10404**Specification****Chromogranin A / CHGA (Neuroendocrine Marker) Antibody - With BSA and Azide -**
Product Information

Application	IHC-P, IF, FC
Primary Accession	P10645
Other Accession	1113 , 150793
Reactivity	Human
Host	Mouse
Clonality	Monoclonal
Isotype	Mouse / IgG1, kappa
Calculated MW	68-75kDa KDa

Chromogranin A / CHGA (Neuroendocrine Marker) Antibody - With BSA and Azide -
Additional Information**Gene ID** 1113**Other Names**

Chromogranin-A, CgA, Pituitary secretory protein I, SP-I, Vasostatin-1, Vasostatin I, Vasostatin-2, Vasostatin II, EA-92, ES-43, Pancreastatin, SS-18, WA-8, WE-14, LF-19, AL-11, GV-19, GR-44, ER-37, CHGA

Application Note

IHC-P~~N/A
IF~~1:50~200
FC~~1:10~50

Format

200ug/ml of Ab purified from Bioreactor Concentrate by Protein A/G. Prepared in 10mM PBS with 0.05% BSA & 0.05% azide. Also available WITHOUT BSA & azide at 1.0mg/ml.

Storage

Store at 2 to 8°C. Antibody is stable for 24 months.

Precautions

Chromogranin A / CHGA (Neuroendocrine Marker) Antibody - With BSA and Azide is for research use only and not for use in diagnostic or therapeutic procedures.

Chromogranin A / CHGA (Neuroendocrine Marker) Antibody - With BSA and Azide -
Protein Information**Name** CHGA**Function**

[Pancreastatin]: Strongly inhibits glucose induced insulin release from the pancreas. [Serpinin]:

Regulates granule biogenesis in endocrine cells by up-regulating the transcription of protease nexin 1 (SERPINE2) via a cAMP-PKA-SP1 pathway. This leads to inhibition of granule protein degradation in the Golgi complex which in turn promotes granule formation.

Cellular Location

[Serpinin]: Secreted {ECO:0000250|UniProtKB:P26339}. Cytoplasmic vesicle, secretory vesicle {ECO:0000250|UniProtKB:P26339}. Note=Pyroglutaminated serpinin localizes to secretory vesicle. {ECO:0000250|UniProtKB:P26339}

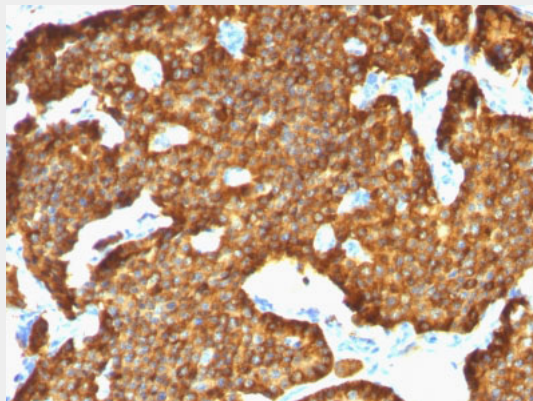
Tissue Location

Detected in cerebrospinal fluid (at protein level) (PubMed:25326458). Detected in urine (at protein level) (PubMed:37453717).

Chromogranin A / CHGA (Neuroendocrine Marker) Antibody - With BSA and Azide - Protocols

Provided below are standard protocols that you may find useful for product applications.

- [Western Blot](#)
- [Blocking Peptides](#)
- [Dot Blot](#)
- [Immunohistochemistry](#)
- [Immunofluorescence](#)
- [Immunoprecipitation](#)
- [Flow Cytometry](#)
- [Cell Culture](#)

Chromogranin A / CHGA (Neuroendocrine Marker) Antibody - With BSA and Azide - Images

Formalin-fixed, paraffin-embedded human Pancreas stained with Chromogranin A Monoclonal Antibody (SPM553).

Chromogranin A / CHGA (Neuroendocrine Marker) Antibody - With BSA and Azide - Background

Chromogranin A is present in neuroendocrine cells throughout the body, including the neuroendocrine cells of the large and small intestine, adrenal medulla and pancreatic islets. It is an excellent marker for carcinoid tumors, pheochromocytomas, paragangliomas, and other neuroendocrine tumors. Co-expression of chromogranin A and neuron specific enolase (NSE) is common in neuroendocrine neoplasms. Reportedly, co-expression of certain keratins and

chromogranin indicates neuroendocrine lineage. The presence of strong anti-chromogranin staining and absence of anti-keratin staining should raise the possibility of paraganglioma. The co-expression of chromogranin and NSE is typical of neuroendocrine neoplasms. Most pituitary adenomas and prolactinomas readily express chromogranin.

**Chromogranin A / CHGA (Neuroendocrine Marker) Antibody - With BSA and Azide -
References**

Konecki DS et. al. J Biol Chem 1987;262:17026-30. | Lloyd RV et. al. Am J Pathol 1988; 130:296-304