

CD35 / CR1 (Follicular Dendritic Cell Marker) Antibody - With BSA and Azide
Mouse Monoclonal Antibody [Clone SPM554]
Catalog # AH10415

Specification

CD35 / CR1 (Follicular Dendritic Cell Marker) Antibody - With BSA and Azide - Product Information

Application	,14,3,4,
Primary Accession	P17927
Other Accession	1378 , 334019
Reactivity	Human, Baboon, Rhesus, Cynomolgus Monkey
Host	Mouse
Clonality	Monoclonal
Isotype	Mouse / IgG1, kappa
Calculated MW	210-220kDa KDa

CD35 / CR1 (Follicular Dendritic Cell Marker) Antibody - With BSA and Azide - Additional Information

Gene ID 1378

Other Names

Complement receptor type 1, C3b/C4b receptor, CD35, CR1, C3BR

Format

200ug/ml of Ab purified from Bioreactor Concentrate by Protein A/G. Prepared in 10mM PBS with 0.05% BSA & 0.05% azide. Also available WITHOUT BSA & azide at 1.0mg/ml.

Storage

Store at 2 to 8°C. Antibody is stable for 24 months.

Precautions

CD35 / CR1 (Follicular Dendritic Cell Marker) Antibody - With BSA and Azide is for research use only and not for use in diagnostic or therapeutic procedures.

CD35 / CR1 (Follicular Dendritic Cell Marker) Antibody - With BSA and Azide - Protein Information

Name CR1

Synonyms C3BR

Function

Membrane immune adherence receptor that plays a critical role in the capture and clearance of complement-opsonized pathogens by erythrocytes and monocytes/macrophages (PubMed:2963069). Mediates the binding by these cells of particles and immune complexes that have activated complement to

eliminate them from the circulation (PubMed:2963069). Acts also in the inhibition of spontaneous complement activation by impairing the formation and function of the alternative and classical pathway C3/C5 convertases, and by serving as a cofactor for the cleavage by factor I of C3b to iC3b, C3c and C3d,g, and of C4b to C4c and C4d (PubMed:2972794, PubMed:8175757). Also plays a role in immune regulation by contributing, upon ligand binding, to the generation of regulatory T cells from activated helper T cells (PubMed:25742728).

Cellular Location

Membrane; Single- pass type I membrane protein

Tissue Location

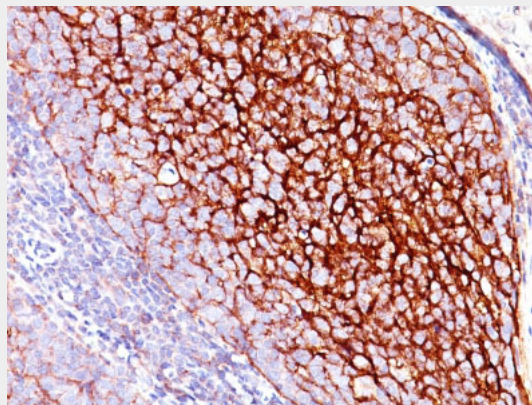
Present on erythrocytes, a subset of T cells, mature B cells, follicular dendritic cells, monocytes and granulocytes

CD35 / CR1 (Follicular Dendritic Cell Marker) Antibody - With BSA and Azide - Protocols

Provided below are standard protocols that you may find useful for product applications.

- [Western Blot](#)
- [Blocking Peptides](#)
- [Dot Blot](#)
- [Immunohistochemistry](#)
- [Immunofluorescence](#)
- [Immunoprecipitation](#)
- [Flow Cytometry](#)
- [Cell Culture](#)

CD35 / CR1 (Follicular Dendritic Cell Marker) Antibody - With BSA and Azide - Images



Formalin-fixed, paraffin-embedded human Tonsil stained with CD35 Monoclonal Antibody (SPM554).

CD35 / CR1 (Follicular Dendritic Cell Marker) Antibody - With BSA and Azide - Background

Recognizes a protein of 210-220kDa, which is identified as the complement receptor 1 (CR1)/CD35. This MAb is specific for a site in CR1 that is distal from the C3b-binding site, so that it is unable to block CR1 activity. This MAb is highly specific to CR1 and shows no cross-reaction with CR2. The primary function of CR1 is to serve as the cellular receptor for C3b and C4b, the most important components of the complement system leading to clearance of foreign macromolecules. The Knops

blood group system is a system of antigens located on this protein. Follicular dendritic cells (FDC) are restricted to the B-cell regions of secondary lymphoid follicles. They are CD21+/CD35+/CD1a-. This MAb labels follicular dendritic cells and follicular dendritic cell sarcoma.

CD35 / CR1 (Follicular Dendritic Cell Marker) Antibody - With BSA and Azide - References

Hogg N, et. al. European Journal of Immunology, 1984, 14:236-43