

TAG-72 / CA72.4 (Tumor-Associated Glycoprotein) Antibody - With BSA and Azide
Mouse Monoclonal Antibody [Clone SPM148]
Catalog # AH10426

Specification

**TAG-72 / CA72.4 (Tumor-Associated Glycoprotein) Antibody - With BSA and Azide -
Product Information**

Application	,14,3,4,
Other Accession	182875
Reactivity	Human, Rat, Hamster, Bovine, Dog
Host	Mouse
Clonality	Monoclonal
Isotype	Mouse / IgG1, kappa
Calculated MW	220kDa KDa

**TAG-72 / CA72.4 (Tumor-Associated Glycoprotein) Antibody - With BSA and Azide -
Additional Information**

Format

200ug/ml of Ab purified from Bioreactor Concentrate by Protein A/G. Prepared in 10mM PBS with 0.05% BSA & 0.05% azide. Also available WITHOUT BSA & azide at 1.0mg/ml.

Storage

Store at 2 to 8°C. Antibody is stable for 24 months.

Precautions

TAG-72 / CA72.4 (Tumor-Associated Glycoprotein) Antibody - With BSA and Azide is for research use only and not for use in diagnostic or therapeutic procedures.

**TAG-72 / CA72.4 (Tumor-Associated Glycoprotein) Antibody - With BSA and Azide -
Protein Information**

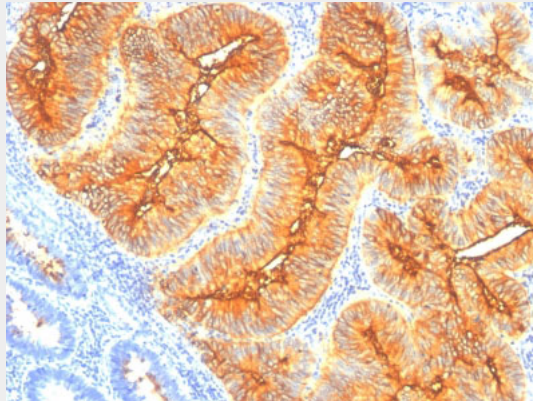
**TAG-72 / CA72.4 (Tumor-Associated Glycoprotein) Antibody - With BSA and Azide -
Protocols**

Provided below are standard protocols that you may find useful for product applications.

- [Western Blot](#)
- [Blocking Peptides](#)
- [Dot Blot](#)
- [Immunohistochemistry](#)
- [Immunofluorescence](#)
- [Immunoprecipitation](#)
- [Flow Cytometry](#)
- [Cell Culture](#)

TAG-72 / CA72.4 (Tumor-Associated Glycoprotein) Antibody - With BSA and Azide -

Images



Formalin-fixed, paraffin-embedded human Colon Carcinoma stained with TAG-72 Monoclonal Antibody (SPM148).

TAG-72 / CA72.4 (Tumor-Associated Glycoprotein) Antibody - With BSA and Azide - Background

Recognizes an oncofetal antigen of 220kDa, identified as a tumor-associated glycoprotein (TAG-72) with properties of a mucin. This MAb defines the mucin-carried sialylated-Tn epitope. TAG-72 is usually expressed by adenocarcinomas, but is negative in mesotheliomas. Studies have reported that this antibody has 80% sensitivity and 93% specificity for pulmonary adenocarcinoma. Therefore, TAG-72 is a useful marker to distinguish between mesothelioma and adenocarcinoma. However, false positive reactions can occur so results must be interpreted with the utmost caution. This antibody may be useful in the differentiation of non-small cell carcinomas from small cell carcinomas of the lung. The combined use of anti-TAG-72 and anti-GCDFP-15 is valuable in the diagnosis of apocrine carcinoma.

TAG-72 / CA72.4 (Tumor-Associated Glycoprotein) Antibody - With BSA and Azide - References

Lottich SC et. al. Breast Cancer Research and Treatment, 1985, 6(1):49-56. | Thor A et. al. Cancer Research, 1986, 46(6):3118-24