

Moesin Antibody - With BSA and Azide
Mouse Monoclonal Antibody [Clone SPM562]
Catalog # AH10595

Specification

Moesin Antibody - With BSA and Azide - Product Information

Application	IHC-P, IF, FC
Primary Accession	P26038
Other Accession	4478, 87752
Reactivity	Human, Rat
Host	Mouse
Clonality	Monoclonal
Isotype	Mouse / IgG1, kappa
Calculated MW	78kDa kDa

Moesin Antibody - With BSA and Azide - Additional Information

Gene ID 4478

Other Names

Moesin, Membrane-organizing extension spike protein, MSN

Application Note

IHC-P~~N/A
IF~~1:50~200
FC~~1:10~50

Format

200ug/ml of Ab purified from Bioreactor Concentrate by Protein A/G. Prepared in 10mM PBS with 0.05% BSA & 0.05% azide. Also available WITHOUT BSA & azide at 1.0mg/ml.

Storage

Store at 2 to 8°C. Antibody is stable for 24 months.

Precautions

Moesin Antibody - With BSA and Azide is for research use only and not for use in diagnostic or therapeutic procedures.

Moesin Antibody - With BSA and Azide - Protein Information

Name MSN ([HGNC:7373](#))

Function

Ezrin-radixin-moesin (ERM) family protein that connects the actin cytoskeleton to the plasma membrane and thereby regulates the structure and function of specific domains of the cell cortex. Tethers actin filaments by oscillating between a resting and an activated state providing transient interactions between moesin and the actin cytoskeleton (PubMed:[10212266](http://www.uniprot.org/citations/10212266)). Once phosphorylated on its C-terminal threonine, moesin is activated leading to interaction with F-actin

and cytoskeletal rearrangement (PubMed:10212266). These rearrangements regulate many cellular processes, including cell shape determination, membrane transport, and signal transduction (PubMed:12387735, PubMed:15039356). The role of moesin is particularly important in immunity acting on both T and B-cells homeostasis and self-tolerance, regulating lymphocyte egress from lymphoid organs (PubMed:9298994, PubMed:9616160). Modulates phagolysosomal biogenesis in macrophages (By similarity). Also participates in immunologic synapse formation (PubMed:27405666).

Cellular Location

Cell membrane; Peripheral membrane protein {ECO:0000250|UniProtKB:P26041}; Cytoplasmic side {ECO:0000250|UniProtKB:P26041}. Cytoplasm, cytoskeleton {ECO:0000250|UniProtKB:P26041}. Apical cell membrane {ECO:0000250|UniProtKB:P26041}; Peripheral membrane protein {ECO:0000250|UniProtKB:P26041}; Cytoplasmic side {ECO:0000250|UniProtKB:P26041}. Cell projection, microvillus membrane {ECO:0000250|UniProtKB:P26041}; Peripheral membrane protein {ECO:0000250|UniProtKB:P26041}; Cytoplasmic side {ECO:0000250|UniProtKB:P26041}. Cell projection, microvillus {ECO:0000250|UniProtKB:P26041}. Note=Phosphorylated form is enriched in microvilli-like structures at apical membrane. Increased cell membrane localization of both phosphorylated and non-phosphorylated forms seen after thrombin treatment (By similarity). Localizes at the uropods of T lymphoblasts. {ECO:0000250|UniProtKB:P26041, ECO:0000269|PubMed:18586956, ECO:0000269|PubMed:9298994}

Tissue Location

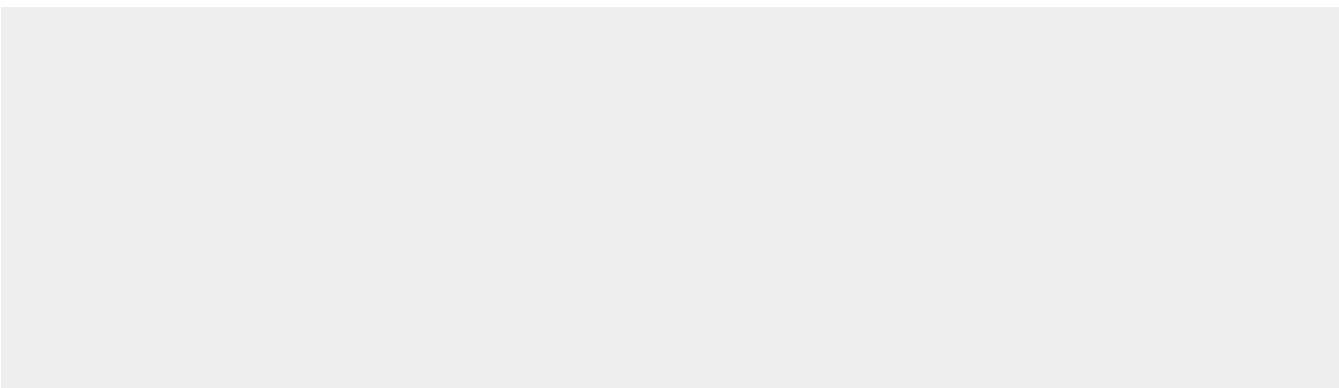
In all tissues and cultured cells studied.

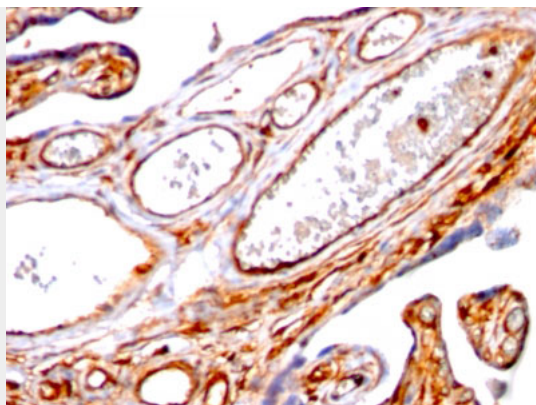
Moesin Antibody - With BSA and Azide - Protocols

Provided below are standard protocols that you may find useful for product applications.

- [Western Blot](#)
- [Blocking Peptides](#)
- [Dot Blot](#)
- [Immunohistochemistry](#)
- [Immunofluorescence](#)
- [Immunoprecipitation](#)
- [Flow Cytometry](#)
- [Cell Culture](#)

Moesin Antibody - With BSA and Azide - Images





Formalin-fixed, paraffin-embedded human Placenta stained with Moesin Monoclonal Antibody (SPM562)

Moesin Antibody - With BSA and Azide - Background

Recognizes 78kDa moesin protein. Moesin, a member of the talin-4.1 superfamily, is a linking protein of the submembraneous actin cytoskeleton. It is expressed in variable amounts in cells of different phenotypes such as macrophages, lymphocytes, fibroblastic, endothelial, epithelial, and neuronal cell lines but not in blood cells. The ERM proteins, ezrin, radixin, and moesin are involved in a variety of cellular functions, such as cell adhesion, migration, and the organization of cell surface structures, and are highly homologous, both in protein sequence and in functional activity, with merlin/schwannomin, a neurofibromatosis-2-associated tumor-suppressor protein. Cell lines of epithelial and mesothelial origin contain both moesin and radixin whereas cells of endothelial and lymphoid origin express moesin.

Moesin Antibody - With BSA and Azide - References

Lankes W et. al., Biochem Journal, 1988; 251:831-842. | Schwartz-Albiez R et. al., European Journal Cell Biology, 1995; 67:189-198. |