

**NKX2.2 (Neuroendocrine & Ewing Sarcoma Marker) Antibody - With BSA and Azide  
Mouse Monoclonal Antibody [Clone SPM564 ]  
Catalog # AH10640**

**Specification**

---

**NKX2.2 (Neuroendocrine & Ewing Sarcoma Marker) Antibody - With BSA and Azide -  
Product Information**

Application	,14,3,4,
Primary Accession	<a href="#">O95096</a>
Other Accession	<a href="#">4821</a> , <a href="#">516922</a>
Reactivity	Human, Mouse, Chicken
Host	Mouse
Clonality	Monoclonal
Isotype	Mouse / IgG2b, kappa
Calculated MW	40-50kDa KDa

**NKX2.2 (Neuroendocrine & Ewing Sarcoma Marker) Antibody - With BSA and Azide -  
Additional Information**

**Gene ID** 4821

**Other Names**

Homeobox protein Nkx-2.2, Homeobox protein NK-2 homolog B, NKX2-2, NKX2.2, NKX2B

**Format**

200ug/ml of Ab purified from Bioreactor Concentrate by Protein A/G. Prepared in 10mM PBS with 0.05% BSA & 0.05% azide. Also available WITHOUT BSA & azide at 1.0mg/ml.

**Storage**

Store at 2 to 8°C. Antibody is stable for 24 months.

**Precautions**

NKX2.2 (Neuroendocrine & Ewing Sarcoma Marker) Antibody - With BSA and Azide is for research use only and not for use in diagnostic or therapeutic procedures.

**NKX2.2 (Neuroendocrine & Ewing Sarcoma Marker) Antibody - With BSA and Azide -  
Protein Information**

**Name** NKX2-2

**Synonyms** NKX2.2, NKX2B

**Function**

Transcriptional activator involved in the development of insulin-producing beta cells in the endocrine pancreas (By similarity). May also be involved in specifying diencephalic neuromeric boundaries, and in controlling the expression of genes that play a role in axonal guidance. Binds to elements within the NEUROD1 promoter (By similarity).

### Cellular Location

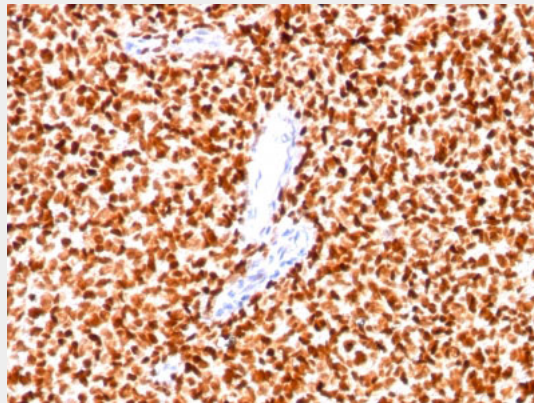
Nucleus {ECO:0000255|PROSITE-ProRule:PRU00108}.

### NKX2.2 (Neuroendocrine & Ewing Sarcoma Marker) Antibody - With BSA and Azide - Protocols

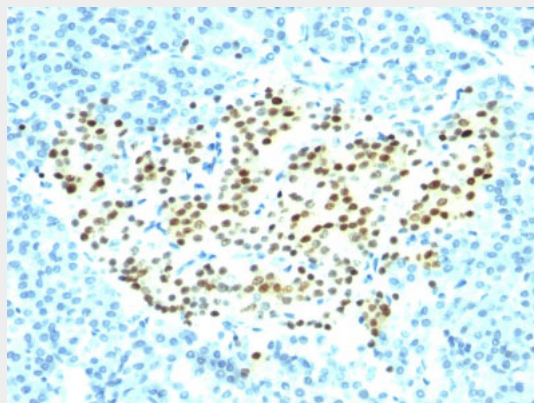
Provided below are standard protocols that you may find useful for product applications.

- [Western Blot](#)
- [Blocking Peptides](#)
- [Dot Blot](#)
- [Immunohistochemistry](#)
- [Immunofluorescence](#)
- [Immunoprecipitation](#)
- [Flow Cytometry](#)
- [Cell Culture](#)

### NKX2.2 (Neuroendocrine & Ewing Sarcoma Marker) Antibody - With BSA and Azide - Images



Formalin-fixed paraffin-embedded human Ewing's sarcoma stained with NKX2.2 Monoclonal Antibody (SPM564).



Formalin-fixed paraffin-embedded human Pancreas stained with NKX2.2 Monoclonal Antibody (SPM564).

### NKX2.2 (Neuroendocrine & Ewing Sarcoma Marker) Antibody - With BSA and Azide - Background

Expression of NKX2.2 has been found in neuroendocrine tumors of the gut, making it a potential marker for the study of gastrointestinal neuroendocrine tumors. More recently, NKX2.2 protein was identified as a target of EWS-FLI-1, the fusion protein specific to Ewing sarcoma, and was shown to be differentially upregulated in Ewing sarcoma on the basis of array-based gene expression analysis. It acts as a valuable marker for Ewing sarcoma, with a sensitivity of 93% and a specificity of 89%, and aids in the differential diagnosis of small round cell tumors.

**NKX2.2 (Neuroendocrine & Ewing Sarcoma Marker) Antibody - With BSA and Azide -  
References**

Wang, Y.C. et al. (2009) Endocr Relat Cancer 16, 267-79. | Yoshida A et. al. Am J Surg Pathol. 2012;36(7):993-9