

Vimentin (Mesenchymal Cell Marker) Antibody - With BSA and Azide
Mouse Monoclonal Antibody [Clone SPM576]
Catalog # AH10809**Specification**

Vimentin (Mesenchymal Cell Marker) Antibody - With BSA and Azide - Product Information

Application	,1,14,3,4,
Primary Accession	P08670
Other Accession	7431 , 455493
Reactivity	Human, Pig, Chicken, Goat, Bovine, Dog, Cat
Host	Mouse
Clonality	Monoclonal
Isotype	Mouse / IgG1
Calculated MW	57-60kDa KDa

Vimentin (Mesenchymal Cell Marker) Antibody - With BSA and Azide - Additional Information**Gene ID** 7431**Other Names**
Vimentin, VIM**Format**

200ug/ml of Ab purified from Bioreactor Concentrate by Protein A/G. Prepared in 10mM PBS with 0.05% BSA & 0.05% azide. Also available WITHOUT BSA & azide at 1.0mg/ml.

Storage

Store at 2 to 8°C. Antibody is stable for 24 months.

Precautions

Vimentin (Mesenchymal Cell Marker) Antibody - With BSA and Azide is for research use only and not for use in diagnostic or therapeutic procedures.

Vimentin (Mesenchymal Cell Marker) Antibody - With BSA and Azide - Protein Information**Name** VIM**Function**

Vimentins are class-III intermediate filaments found in various non-epithelial cells, especially mesenchymal cells. Vimentin is attached to the nucleus, endoplasmic reticulum, and mitochondria, either laterally or terminally.

Cellular Location

Cytoplasm. Cytoplasm, cytoskeleton. Nucleus matrix {ECO:0000250|UniProtKB:P31000}. Cell

membrane {ECO:0000250|UniProtKB:P20152}

Tissue Location

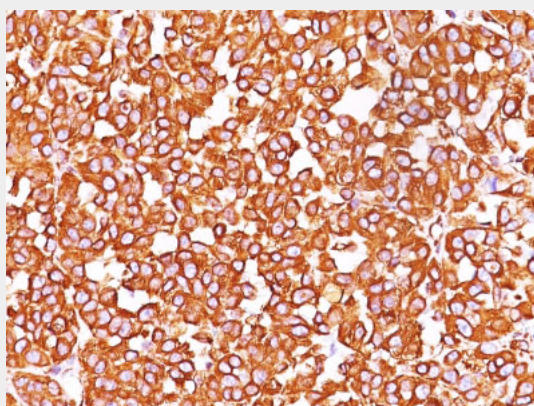
Highly expressed in fibroblasts, some expression in T- and B-lymphocytes, and little or no expression in Burkitt's lymphoma cell lines. Expressed in many hormone-independent mammary carcinoma cell lines.

Vimentin (Mesenchymal Cell Marker) Antibody - With BSA and Azide - Protocols

Provided below are standard protocols that you may find useful for product applications.

- [Western Blot](#)
- [Blocking Peptides](#)
- [Dot Blot](#)
- [Immunohistochemistry](#)
- [Immunofluorescence](#)
- [Immunoprecipitation](#)
- [Flow Cytometry](#)
- [Cell Culture](#)

Vimentin (Mesenchymal Cell Marker) Antibody - With BSA and Azide - Images



Formalin-fixed, paraffin-embedded human Melanoma stained with Vimentin Monoclonal Antibody (SPM576).

Vimentin (Mesenchymal Cell Marker) Antibody - With BSA and Azide - Background

This MAb reacts with a 58kDa protein identified as vimentin. It shows no cross-reaction with other closely related intermediate filament proteins (IFP[™]s) such as desmin, keratin, neurofilament, and glial fibrillary acid protein. Anti-vimentin alone is of limited value as a diagnostic tool; however, when used in panels with other antibodies, it is useful for the sub-classification of a given tumor. Expression of vimentin, when used in conjunction with anti-keratin, is helpful when distinguishing melanomas from undifferentiated carcinomas and large cell lymphomas. All melanomas and Schwannomas react strongly with anti-vimentin. It labels a variety of mesenchymal cells, including melanocytes, lymphocytes, endothelial cells, and fibroblasts. Non-reactivity of anti-vimentin is often considered more useful than its positive reactivity, since there are a few tumors that do not contain vimentin, e.g. hepatoma and seminoma. Anti-vimentin is also useful as a tissue process control reagent.

Vimentin (Mesenchymal Cell Marker) Antibody - With BSA and Azide - References

Osborn M et. al. European Journal of Cell Biology. 1984; 34:137-143