

CD1a (Mature Langerhans Cells Marker) Antibody - With BSA and Azide
Mouse Monoclonal Antibody [Clone SPM120]
Catalog # AH10832

Specification

CD1a (Mature Langerhans Cells Marker) Antibody - With BSA and Azide - Product Information

Application	IHC-P, IF, FC
Primary Accession	P06126
Other Accession	909 , 1309
Reactivity	Human
Host	Mouse
Clonality	Monoclonal
Isotype	Mouse / IgG1, kappa
Calculated MW	49kDa KDa

CD1a (Mature Langerhans Cells Marker) Antibody - With BSA and Azide - Additional Information

Gene ID 909

Other Names

T-cell surface glycoprotein CD1a, T-cell surface antigen T6/Leu-6, hTa1 thymocyte antigen, CD1a, CD1A

Application Note

IHC-P~~N/A
IF~~1:50~200
FC~~1:10~50

Format

200ug/ml of Ab purified from Bioreactor Concentrate by Protein A/G. Prepared in 10mM PBS with 0.05% BSA & 0.05% azide. Also available WITHOUT BSA & azide at 1.0mg/ml.

Storage

Store at 2 to 8°C. Antibody is stable for 24 months.

Precautions

CD1a (Mature Langerhans Cells Marker) Antibody - With BSA and Azide is for research use only and not for use in diagnostic or therapeutic procedures.

CD1a (Mature Langerhans Cells Marker) Antibody - With BSA and Azide - Protein Information

Name CD1A

Function

Antigen-presenting protein that binds self and non-self lipid and glycolipid antigens and presents them to T-cell receptors on natural killer T-cells.

Cellular Location

Cell membrane; Single-pass type I membrane protein. Membrane raft; Single-pass type I membrane protein. Endosome membrane; Single-pass type I membrane protein. Note=Subject to intracellular trafficking between the cell membrane and endosomes (PubMed:11231314). Localizes to cell surface lipid rafts (PubMed:18178838).

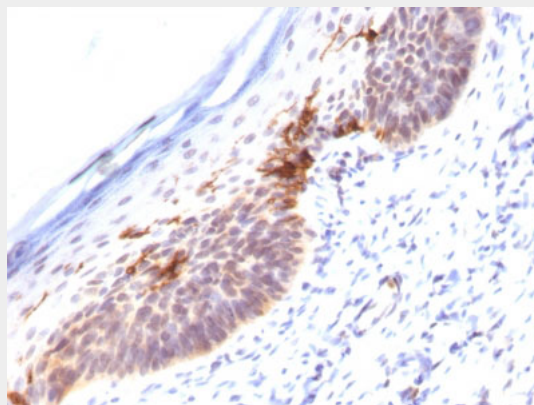
Tissue Location

Expressed on cortical thymocytes, epidermal Langerhans cells, dendritic cells, on certain T-cell leukemias, and in various other tissues.

CD1a (Mature Langerhans Cells Marker) Antibody - With BSA and Azide - Protocols

Provided below are standard protocols that you may find useful for product applications.

- [Western Blot](#)
- [Blocking Peptides](#)
- [Dot Blot](#)
- [Immunohistochemistry](#)
- [Immunofluorescence](#)
- [Immunoprecipitation](#)
- [Flow Cytometry](#)
- [Cell Culture](#)

CD1a (Mature Langerhans Cells Marker) Antibody - With BSA and Azide - Images

Formalin-fixed, paraffin-embedded human Skin stained with CD1a Monoclonal Antibody (SPM120).

CD1a (Mature Langerhans Cells Marker) Antibody - With BSA and Azide - Background

At least five CD1 genes (CD1a, b, c, d, and e) are identified. CD1 proteins have been demonstrated to restrict T cell response to non-peptide lipid and glycolipid antigens and play a role in non-classical antigen presentation. CD1a is a non-polymorphic MHC Class 1 related cell surface glycoprotein, expressed in association with Beta-2 microglobulin. Anti-CD1a labels Langerhans cell histiocytosis (Histiocytosis X), extranodal histiocytic sarcoma, a subset of T-lymphoblastic lymphoma/leukemia, and interdigitating dendritic cell sarcoma of the lymph node. When combined with antibodies against TTF-1 and CD5, anti-CD1a is useful in distinguishing between pulmonary and thymic neoplasms since CD1a is consistently expressed in thymic lymphocytes in both typical and atypical thymomas, but only focally in 1/6 of thymic carcinomas and not in lymphocytes in pulmonary neoplasms. Anti-CD1a is reported to be a new marker for perivascular epithelial cell tumor (PEComa).

CD1a (Mature Langerhans Cells Marker) Antibody - With BSA and Azide - References

McNally, AK. et al. 2011. Exp. Mol. Pathol. 91: 673-681. | Matsuda, A. et al. 2009. Invest. Ophthalmol. Vis. Sci. 50: 2871-2877. | Gulubova, M. et al. 2008. Clin. Exp. Metastasis. 25: 777-785. | Cassaday, RD. et al. 2007. Clin. Cancer Res. 13: 540-549.