

**Cytokeratin, pan (Epithelial Marker) Antibody - Purified Ab conjugated to PE**  
**Mouse Monoclonal Antibody [Clone SPM115 + SPM116 ]**  
**Catalog # AH10957**

**Specification**

**Cytokeratin, pan (Epithelial Marker) Antibody - Purified Ab conjugated to PE - Product Information**

Application	,1,14,3,4,
Primary Accession	<a href="#">Q7Z794</a>
Other Accession	<a href="#">374454 (KRT77)</a> , <a href="#">51350 (KRT76)</a> , <a href="#">334989 (KRT77)</a> , <a href="#">654392 (KRT76)</a> , <a href="#">Q01546</a>
Reactivity	Human, Mouse, Rat, Rabbit, Monkey, Chicken, Bovine, Dog
Host	Mouse
Clonality	Monoclonal
Isotype	Mouse / IgG's
Calculated MW	67kDa (CK1); 64kDa (CK3); 59kDa (CK4); 58kDa (CK5); 56kDa (CK6); 52kDa (CK8); 56.5kDa (CK10); 50kDa (CK14); 50kDa (CK15); 48kDa (CK16); 40kDa (CK19) KDa

**Cytokeratin, pan (Epithelial Marker) Antibody - Purified Ab conjugated to PE - Additional Information**

**Gene ID** 374454

**Other Names**

Keratin, type II cytoskeletal 1b, Cytokeratin-1B, CK-1B, Keratin-77, K77, Type-II keratin Kb39, KRT77, KRT1B

**Format**

Antibody purified from Bioreactor Concentrate by Protein A/G and conjugated to various reporter molecules. Prepared in 10mM PBS with 0.05% BSA and 0.05% azide. Contact us if you require this Ab in a different format.

**Storage**

Store at 2 to 8°C. Antibody is stable for 24 months.

**Precautions**

Cytokeratin, pan (Epithelial Marker) Antibody - Purified Ab conjugated to PE is for research use only and not for use in diagnostic or therapeutic procedures.

**Cytokeratin, pan (Epithelial Marker) Antibody - Purified Ab conjugated to PE - Protein Information**

**Name** KRT77

**Synonyms** KRT1B

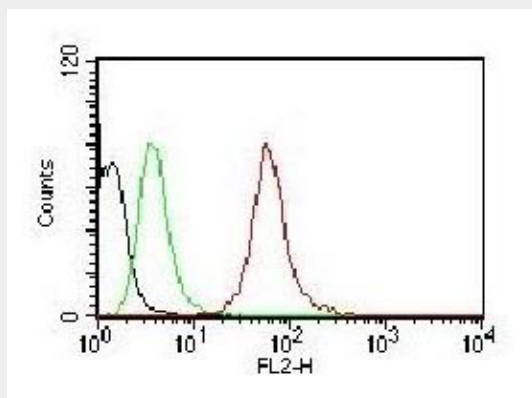
**Tissue Location**

Expressed exclusively in skin.

**Cytokeratin, pan (Epithelial Marker) Antibody - Purified Ab conjugated to PE - Protocols**

Provided below are standard protocols that you may find useful for product applications.

- [Western Blot](#)
- [Blocking Peptides](#)
- [Dot Blot](#)
- [Immunohistochemistry](#)
- [Immunofluorescence](#)
- [Immunoprecipitation](#)
- [Flow Cytometry](#)
- [Cell Culture](#)

**Cytokeratin, pan (Epithelial Marker) Antibody - Purified Ab conjugated to PE - Images**

Flow Cytometry of human Pan-Cytokeratins on HeLa Cells. Black: Cells alone; Green: Isotype Control; Red: PE-labeled Pan-Cytokeratin Monoclonal Antibody (SPM115 + SPM116).

**Cytokeratin, pan (Epithelial Marker) Antibody - Purified Ab conjugated to PE - Background**

Twenty human keratins are resolved with two-dimensional gel electrophoresis into acidic (pI 6.0) subfamilies. This antibody cocktail recognizes acidic (Type I or LMW) and basic (Type II or HMW) cytokeratins, which include CK1, CK3, CK4, CK5, CK6, CK8, CK10, CK14, CK15, CK16, and CK19. Many studies have shown the usefulness of keratins as markers in cancer research and tumor diagnosis. This MAb is a broad spectrum anti pan-cytokeratin antibody cocktail, which differentiates epithelial tumors from non-epithelial tumors e.g. squamous vs. adenocarcinoma of the lung, liver carcinoma, breast cancer, and esophageal cancer. It has been used to characterize the source of various neoplasms and to study the distribution of cytokeratin containing cells in epithelia during normal development and during the development of epithelial neoplasms. This antibody stains cytokeratins present in normal and abnormal human tissues and has shown high sensitivity in the recognition of epithelial cells and carcinomas.

**Cytokeratin, pan (Epithelial Marker) Antibody - Purified Ab conjugated to PE - References**

Woodcock-Mitchell J et. al. Journal of Cell Biology 1982;95:580-8. | Tseng SCG et. al. Cell 1982; 30361