

Cytokeratin, Acidic (Type I or LMW) (Epithelial Marker) Antibody - With BSA and Azide
Mouse Monoclonal Antibody [Clone SPM115]
Catalog # AH10969

Specification

**Cytokeratin, Acidic (Type I or LMW) (Epithelial Marker) Antibody - With BSA and Azide -
Product Information**

Application	,1,14,3,4,
Primary Accession	Q7Z794
Other Accession	374454 , 334989
Reactivity	Human, Mouse, Rat, Rabbit, Monkey, Chicken, Bovine, Dog
Host	Mouse
Clonality	Monoclonal
Isotype	Mouse / IgG1, kappa
Calculated MW	56.5kDa (CK10); 50kDa (CK14); 50kDa (CK15); 48kDa (CK16); 40kDa (CK19) KDa

**Cytokeratin, Acidic (Type I or LMW) (Epithelial Marker) Antibody - With BSA and Azide -
Additional Information**

Gene ID 374454

Other Names

Keratin, type II cytoskeletal 1b, Cytokeratin-1B, CK-1B, Keratin-77, K77, Type-II keratin Kb39, KRT77, KRT1B

Format

200ug/ml of Ab purified from Bioreactor Concentrate by Protein A/G. Prepared in 10mM PBS with 0.05% BSA & 0.05% azide. Also available WITHOUT BSA & azide at 1.0mg/ml.

Storage

Store at 2 to 8°C. Antibody is stable for 24 months.

Precautions

Cytokeratin, Acidic (Type I or LMW) (Epithelial Marker) Antibody - With BSA and Azide is for research use only and not for use in diagnostic or therapeutic procedures.

**Cytokeratin, Acidic (Type I or LMW) (Epithelial Marker) Antibody - With BSA and Azide -
Protein Information**

Name KRT77

Synonyms KRT1B

Tissue Location

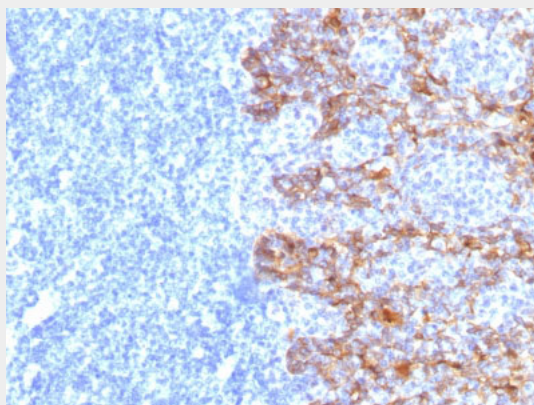
Expressed exclusively in skin.

Cytokeratin, Acidic (Type I or LMW) (Epithelial Marker) Antibody - With BSA and Azide - Protocols

Provided below are standard protocols that you may find useful for product applications.

- [Western Blot](#)
- [Blocking Peptides](#)
- [Dot Blot](#)
- [Immunohistochemistry](#)
- [Immunofluorescence](#)
- [Immunoprecipitation](#)
- [Flow Cytometry](#)
- [Cell Culture](#)

Cytokeratin, Acidic (Type I or LMW) (Epithelial Marker) Antibody - With BSA and Azide - Images



Formalin-fixed, paraffin-embedded human Tonsil stained with Cytokeratin, LMW Monoclonal Antibody (SPM115)

Cytokeratin, Acidic (Type I or LMW) (Epithelial Marker) Antibody - With BSA and Azide - Background

This MAb recognizes the 56.5kDa (CK10); 50kDa (CK14); 50kDa (CK15); 48kDa (CK16); 40kDa (CK19) keratins of the acidic (Type I or LMW) subfamily. Twenty human keratins are resolved with two-dimensional gel electrophoresis into acidic (pI 6.0) subfamilies. The acidic keratins have molecular weights (MW) of 56.5, 55, 51, 50, 50 kDa[™], 48, 46, 45, and 40kDa. MAb SPM116 recognizes the 65-67, 64, 59, 58, 56, and 52kDa keratins of basic subfamily. Many studies have shown the usefulness of keratins as markers in cancer research and tumor diagnosis. SPM115/SPM116 is a broad spectrum anti pan-keratin antibody cocktail, which differentiates epithelial tumors from non-epithelial tumors e.g. squamous vs. adenocarcinoma of the lung, liver carcinoma, breast cancer, and esophageal cancer.

Cytokeratin, Acidic (Type I or LMW) (Epithelial Marker) Antibody - With BSA and Azide - References

Woodcock-Mitchell J et. al. Journal of Cell Biology 1982;95:580-8. | Tseng SCG et. al. Cell 1982; 30361