

**Bromodeoxyuridine (BrdU) (Proliferation Marker) Antibody - With BSA and Azide  
Mouse Monoclonal Antibody [Clone BRD469 + BRD494 + BRD.3 ]  
Catalog # AH10977**

**Specification**

**Bromodeoxyuridine (BrdU) (Proliferation Marker) Antibody - With BSA and Azide -  
Product Information**

Application	,14,3,4,
Host	Mouse
Clonality	Monoclonal
Isotype	Mouse / IgG1 s
Calculated MW	Depends on the target KDa

**Bromodeoxyuridine (BrdU) (Proliferation Marker) Antibody - With BSA and Azide -  
Additional Information**

**Format**

200ug/ml of Ab purified from Bioreactor Concentrate by Protein A/G. Prepared in 10mM PBS with 0.05% BSA & 0.05% azide. Also available WITHOUT BSA & azide at 1.0mg/ml.

**Storage**

Store at 2 to 8°C. Antibody is stable for 24 months.

**Precautions**

Bromodeoxyuridine (BrdU) (Proliferation Marker) Antibody - With BSA and Azide is for research use only and not for use in diagnostic or therapeutic procedures.

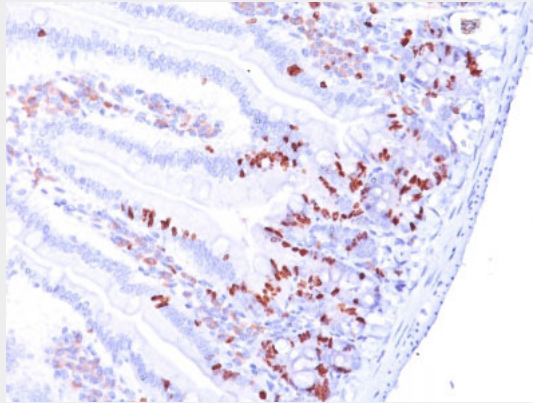
**Bromodeoxyuridine (BrdU) (Proliferation Marker) Antibody - With BSA and Azide -  
Protein Information**

**Bromodeoxyuridine (BrdU) (Proliferation Marker) Antibody - With BSA and Azide -  
Protocols**

Provided below are standard protocols that you may find useful for product applications.

- [Western Blot](#)
- [Blocking Peptides](#)
- [Dot Blot](#)
- [Immunohistochemistry](#)
- [Immunofluorescence](#)
- [Immunoprecipitation](#)
- [Flow Cytometry](#)
- [Cell Culture](#)

**Bromodeoxyuridine (BrdU) (Proliferation Marker) Antibody - With BSA and Azide - Images**



Formalin-fixed, paraffin-embedded Mouse Small Intestine stained with BrdU Monoclonal Antibody (BRD469 + BRD494 + BRD.3).

#### **Bromodeoxyuridine (BrdU) (Proliferation Marker) Antibody - With BSA and Azide - Background**

It reacts with Bromodeoxyuridine (BrdU) in single stranded DNA (produced by partial denaturation of double stranded DNA), BrdU coupled to a protein carrier, as well as free BrdU. BrdU is a thymidine analog, incorporated into cell nuclei during DNA synthesis prior to mitosis. Antibody to BrdU is helpful in detecting S-phase cells, providing useful information on the aggressiveness of tumors.

#### **Bromodeoxyuridine (BrdU) (Proliferation Marker) Antibody - With BSA and Azide - References**

Welberg JW et. al. Journal of Clinical Pathology, 1990, 43(6):453-6. Williams LS et. al. Cytometry, 1990, 11(4):490-7